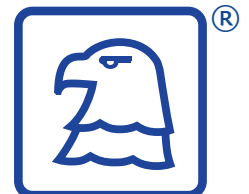




# Eagle Research Corporation®

## Product Brochure





# Company Profile

For over 35 years, **Eagle Research Corporation®** has provided automation and telemetry solutions for remote data acquisition and control throughout all segments of the energy industry, as well as commercial water/wastewater and industrial process control/monitoring. Established in 1976 as a local supplier of personal computers, Eagle began developing products for process control for the local mining industry as the increasing need for data began to take center stage. As the telemetry industry continued to evolve, Eagle developed and began to supply some of the natural gas industry's first microprocessor based flow computers and RTU's – where we continue to be a leading supplier today. We pride ourselves on our reputation for offering all of our customers superior Service, Support and Reliability regardless of size or location. Having our headquarters in Hurricane, WV puts us in the heart of some of the largest natural gas shale discoveries in North America, the exploration of which has helped to keep us on the forefront of development strategies and technologies. Our commitment to the highest quality Service, Support and Reliability and utilization of a technically skilled distribution network has fueled our continued growth over the years allowing us to expand our distribution throughout the United States and abroad to include Latin America, South America, and Asia. We continue our commitment to our customers by offering the industry's first FOUR YEAR WARRANTY.



**Established in 1976**

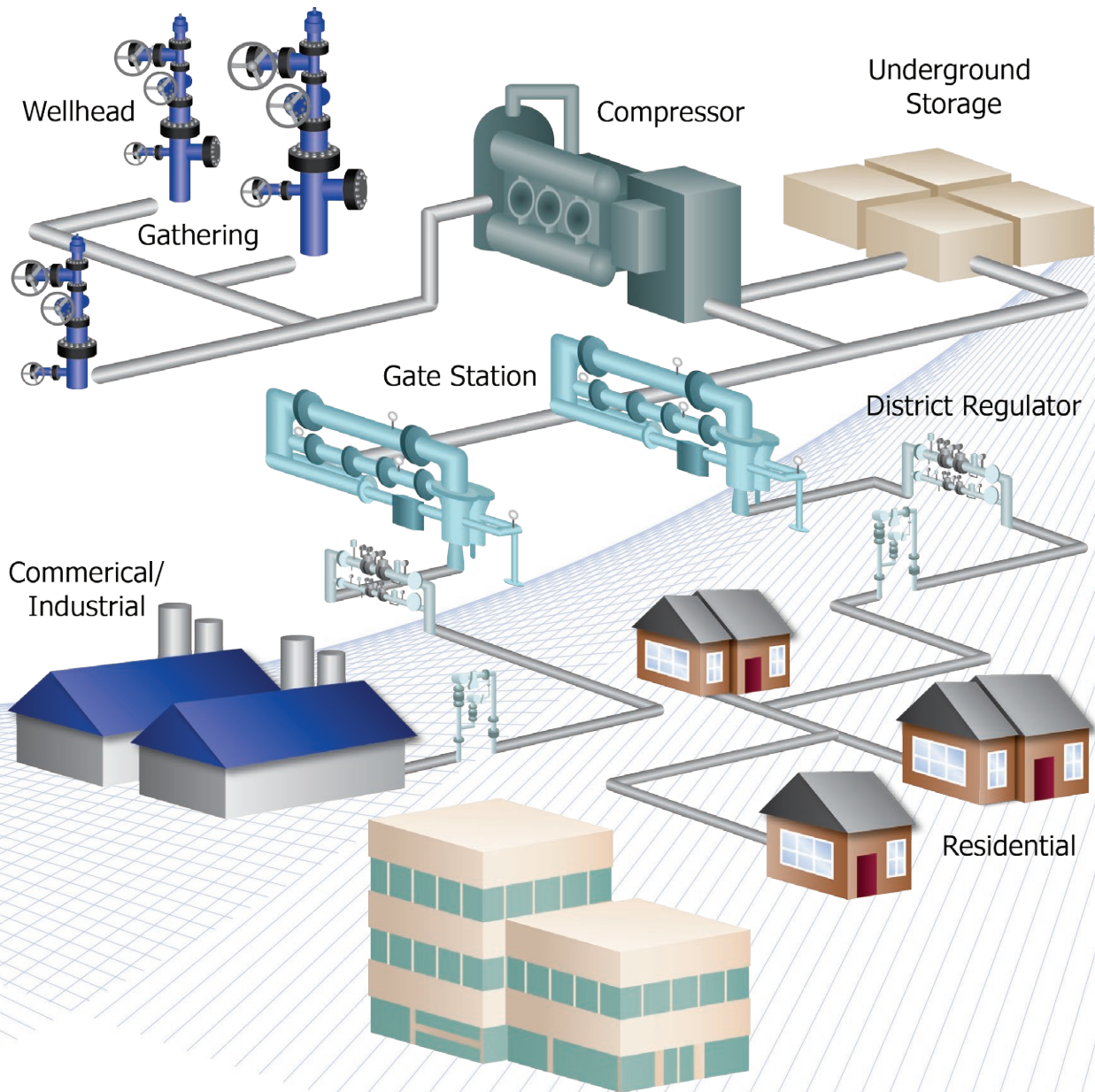


Dedication to quality control and commitment to the local economy is exhibited by our refusing to outsource critical component manufacture and software development. We manufacture all circuit boards in-house with state-of-the-art PCB manufacturing equipment utilizing the latest in surface mount techniques. Our extensive staff of dedicated electrical, software, mechanical engineers, service technicians, and support staff work together to insure that all products are exhaustively tested and warrant our customer's complete confidence and satisfaction. Eagle Research is constantly researching and developing new products and services to offer the best and latest to our customers.

Our experienced sales staff and applications engineers look forward to providing you with a full service "one stop" experience from project conception and design to turnkey start-up and installation.



# Field...



## ...Front Office Solutions™

**FIRST in RELIABILITY**  
**FIRST in INNOVATION**  
**FIRST in COMMUNICATIONS**  
**FIRST in SUPPORT**  
**FIRST in PRODUCT TRAINING**  
**SECOND to NONE.....**



**EAGLE RESEARCH®**  
**CORPORATION**

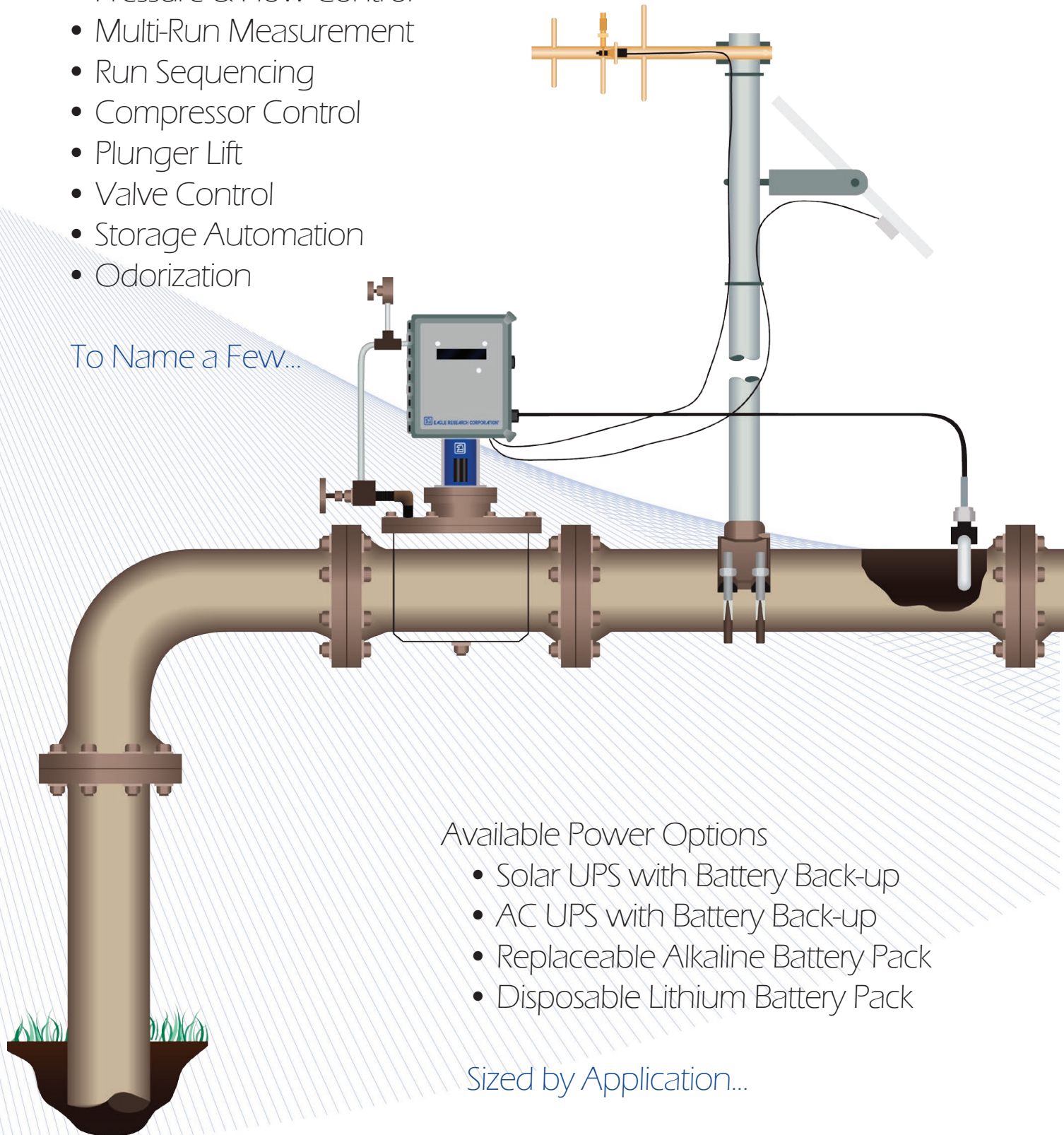


# Remote Automation Solutions

## An Abundance of Applications

- Pressure & Flow Control
- Multi-Run Measurement
- Run Sequencing
- Compressor Control
- Plunger Lift
- Valve Control
- Storage Automation
- Odorization

To Name a Few...

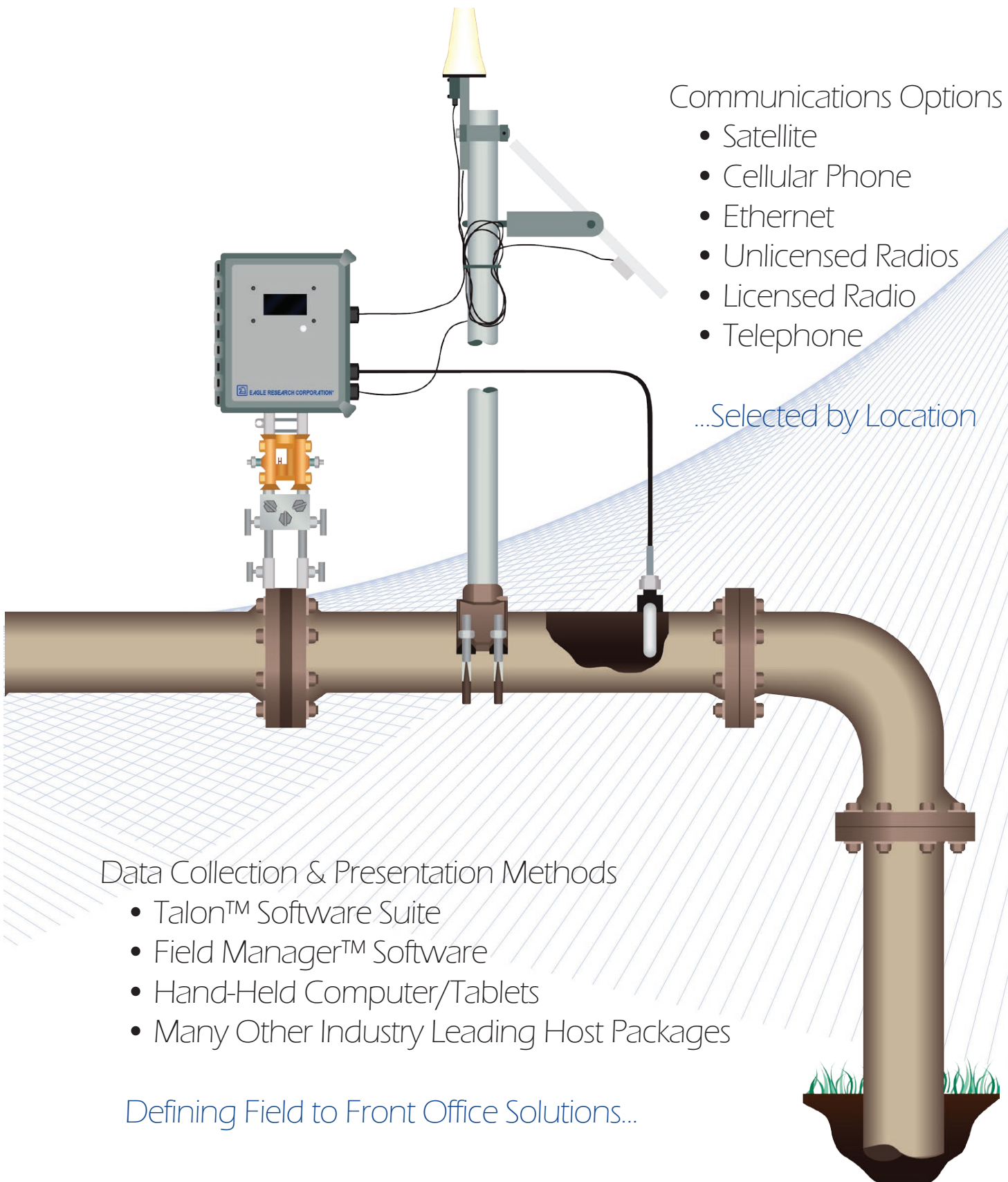


## Available Power Options

- Solar UPS with Battery Back-up
- AC UPS with Battery Back-up
- Replaceable Alkaline Battery Pack
- Disposable Lithium Battery Pack

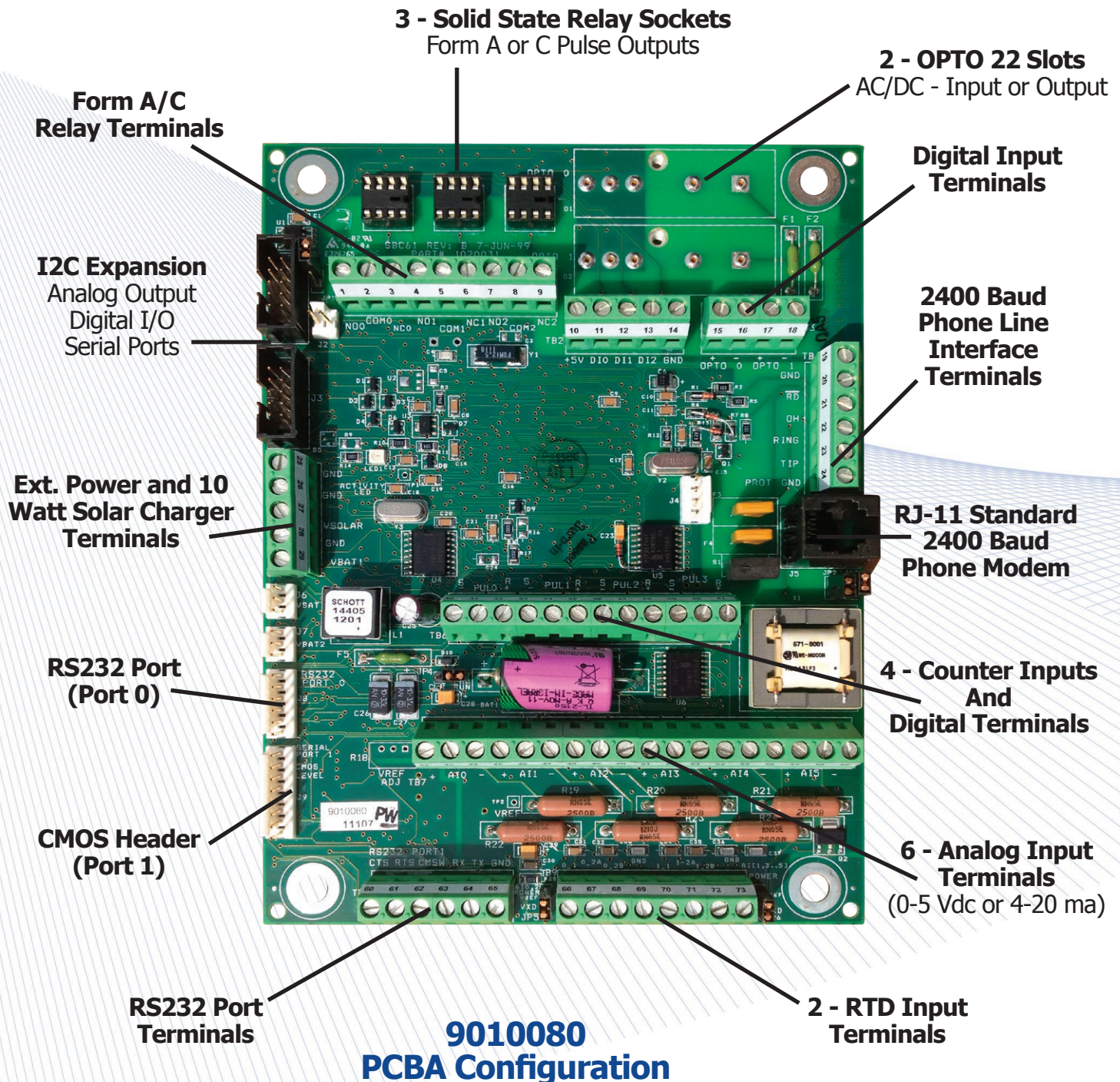
Sized by Application...







## At the Heart of XARTU/1™ Solution Building...

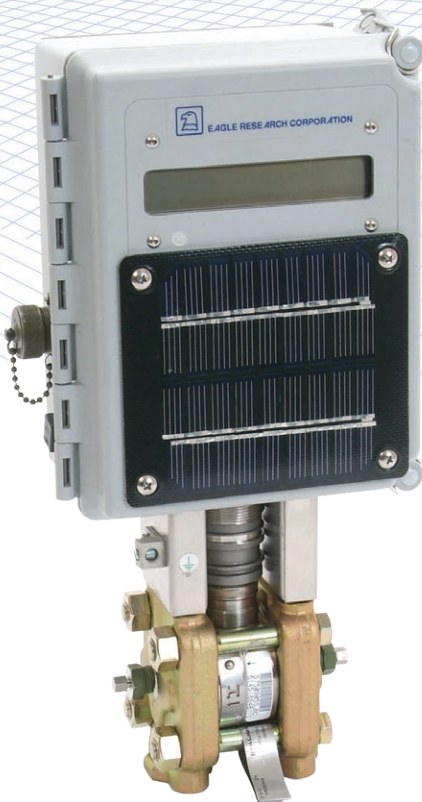
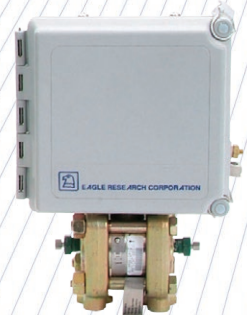




# XARTU/1™ Flow Computer

Orifice flow measurement requires the integration of DP, P&T with adjustments for Specific Gravity and Composition. The **XARTU/1™** offers:

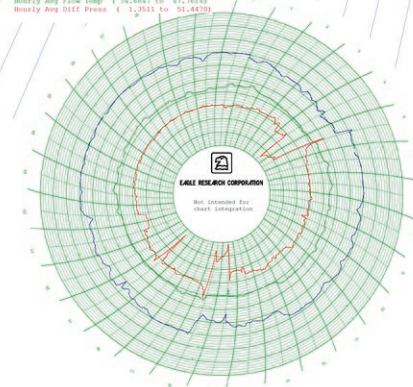
- API Chapter 21 Compliancy
- AGA3 and AGA5 Capability
- AGA8 (Detailed & Gross Methods 1 & 2) & NX-19
- Autoranging Multi-variable Integrated Transmitter
- RTD for Temperature Measurement
- Absolute or Gauge Pressure
- Single and Bi-Directional Measurement
- Multiple Run Capability
- RS232/485 Connectivity to GC's, Moisture Analyzers, etc.
- Analog/Digital I/O for Control Applications
- Choice of Displays
  - Single Line, Four Line, and Graphic, and Back-Lit
  - Auto-Scroll & Magnetic Scroll
- Solar or AC Powered with Battery Back-up
- Variety of Wireless Options Supported



## XALCR™ Chart Replacement

The **XALCR™** is an economical replacement for aging circular chart recorders. The **XALCR™** comes complete with an integrated multi-variable transmitter for DP & SP. Data can be read locally on the LCD display or collected with **Field Manager™** or **Field Manager Plus™**. The circular charting feature in **Field Manager Plus™** allows users to display data graphically, similar to the chart recorder. Packages are available that include a Netbook Computer preloaded with **Field Manager Plus™** with the computer is setup right out of the box.

Station Name: Airport Master (8200)  
Chart Name: Free Mouth  
Date Range: 01/01/2012 09:00 - 01/31/2012 23:59  
Hourly Avg Flow Press: 1.55-4.979 to 72.07094  
Hourly Avg Flow Temp: 1.38-4847 to 47.76149  
Hourly Avg Diff Press: 1.1-2.011 to 91.4870





# XARTU/1™ Volume Corrector



The **XARTU/1™-LDVI** Volume Corrector is the core product in the volume corrector line. This configuration offers:

- Low Drag Vertical Index (LDVI)
- Single and Bi-Directional Versions Available
- AGA7, AGA8 (Detail & Gross Method 1 & 2), & NX-19 capability
- API Chapter 21 Compliancy
- Wide choice of Pressure Ranges (Absolute or Gauge)
- Digital Outputs for Corrected/Uncorrected Volumes
- Configurable for Forward, Reverse and Net Volumes
- Power Requirement Dependent on Communications Method and Frequency
- Multi-Run Configurations Available Using a Transducer Interface or XDI.

Packaging of the **XARTU/1™-LDVI** is determined by the application and communications requirements:

- Phone, Cellular, Radio or Satellite Communications options
- Battery Backup = Individually Sized to Meet Application and Communication Specifications
- 1 Watt Solar Panel and 1.2Ah option available Battery
- Replaceable Alkaline, Disposable Lithium, & Disposable Alkaline
- Disposable Alkaline & Lithium Battery Packs Available
- Ultrasonic & Coriolis Applications Available





# XARTU/1™ LDVI-AAT Corrector

The **XARTU/1™-LDVI-AAT** Volume Corrector is applicable configured for the Sensus Auto-Adjust™ Turbine meter. Features of this configuration include:

- Embedded Sensus Auto-Adjust™ Algorithms Certified by Sensus™
- Live GC inputs
- AGA5, AGA7, AGA8 Detailed and Gross Methods 1 & 2, & NX-19 Calculation Capability
- Optional live 4-20mA or Frequency Output for Instantaneous Flow Rate
- Configurable via RS232 for MODBUS® Communication
- Optional RS485 with Expansion Board
- Optional Wireless Communications (Cellular/Radio/Satellite)
- Live Graphing of Main/Sense Frequencies in **Field Manager Plus™**



Universal Mounting and Software Setup benefits:

- Field Installation Directly on the Meter or an Instrument Drive via Universal Mounting Plate
- Light weight, Easily Installed by One Person
- Software Configurable for Different Meter Output Revolutions, i.e. 10 ft./rev, 100 ft./rev, etc.
- Magnetic Switch Activated Display
- Additional Meter Runs Using Remote Index/Press/Temp

## Volume Accumulator



The **XARTU/1™-VA** Volume Accumulator offers advantages to an LDC's transportation customer's volumes, such as:

- Accepts high or low frequency pulses
- Two-way calling using shared phone line
- Off-hook detection on shared lines prevents interruption during an emergency situation
- Fixed factor measurement
- Up to four meters connected simultaneously
- Up to three Form-C outputs configurable to corrected or uncorrected volume to energy management systems
- Wall, Pipe Mount or LDVI for mounting



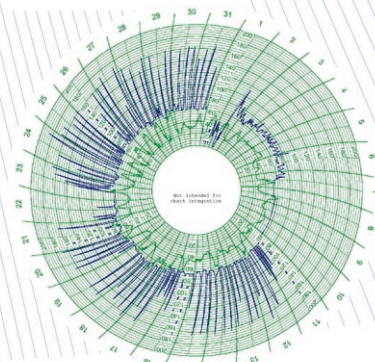


The **MPplus™** Volume Corrector is a cost reduced, commoditized version of the **XARTU/1™-LDVI** series of volume corrector products featuring:

- Outdoor rated 6"x6"x4" fiberglass enclosure with locking hasps
- Large easy-to-read LCD display with magnetic scroll
- Single or Dual Pressure Inputs
- Standard RTD for temperature measurement
- AGA5, AGA7, NX-19, AGA8 (Detailed & Gross Methods)
- 4 Form A Pulse Outputs
- Optional Pulse Output Board for AMR—AMI Applications to extend battery life
- (2) Pulse Inputs for Dual Meter Configurations
- No wiring required in LDVI meter mounted configuration
- Single line display with magnetic scroll
- Powered by either 1 Watt Solar Panel w/ 6 Volt 4.5Ah rechargeable battery or 6 C-Cell replaceable battery pack.
  - Other power options on request.
- Optional LDVI with Universal Turbine and Positive Displacement meter mounting plate that imposes very little drag on the meter index drive
- Available in Single and Bi-Directional



Station Name: Footburg #7 (4471)  
Chart Name: Pressure & Temperature Chart  
Date Range: 02/01/2011 00:00 - 02/01/2011 23:59  
Pressure ( 1-4200 to 286-1210 )  
Temperature ( 10-3990 to 77-1212 )



## Circular Chart Replacement

The **MPplus™** Pressure & Temperature Recorder is an excellent choice for replacing paper charts at regulator stations throughout your entire system. Historical archiving and trending using any of Eagle's software packages allows easy graphical viewing of pressure fluctuations at regulator stations or load analysis of system use by engineering departments.



# Pressure Recorder

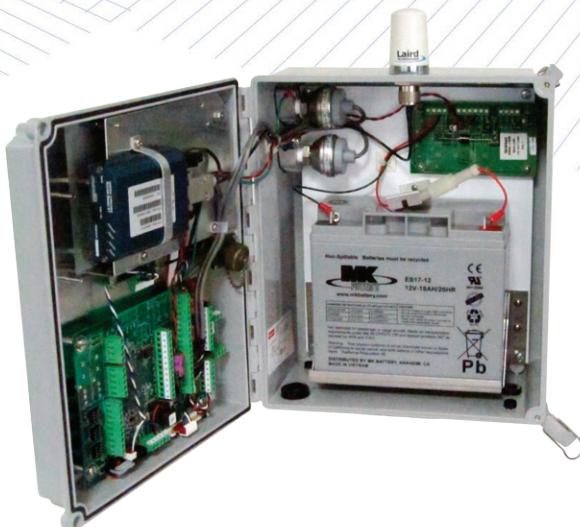
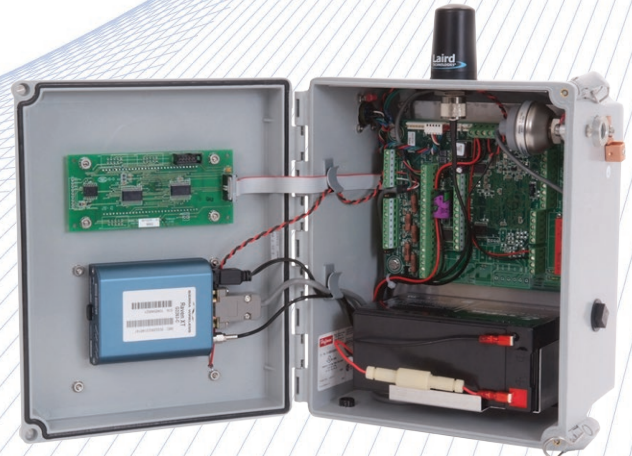
The **XARTU/1™-RtPM** Real Time Pressure Monitor (RTPM) configuration is also a fully functional RTU with flexibility for expansion, including:

- Up to six individual pressure measurements
- Up to two temperature measurements
- Optional Four line Graphical Display
- Communications including Phone/Cellular/Radio/Satellite for Real Time information and alarms
- Choice of Power Options specifically sized to the application requirements
- Flow measurement can be easily added if requirements change



Programmable for multiple control applications, including:

- Control capabilities for Solenoid Control Interface (SCI) for regulator control
- Pressure control at City Gate Stations
- Shutdown Valve Control in emergencies
- Compressor Suction, Recirculation and Discharge Pressure Control Programmability
- Odorizer Control either Fixed or Coupled to flow rate (Flow Measurement required for rate control)
- Pipeline status monitoring



Small footprint, high performance and outdoor rated featuring:

- Fiberglass Enclosure with Quick Release Hasps
- Ability to store and poll up to 20,000 user definable history records
- User configurable "Awake Windows" to minimize power requirements
- Pressure scan times of 1/sec or less depending on user requirements



## Solenoid Control



The **Solenoid Control Interface (SCI)** allows the **XA Series™** products to perform remote control of pressure or flow.

An existing gas regulator can be converted to remotely control pressure or flow without requiring any process piping modifications. Only some instrument tubing and regulators are required for the interface.

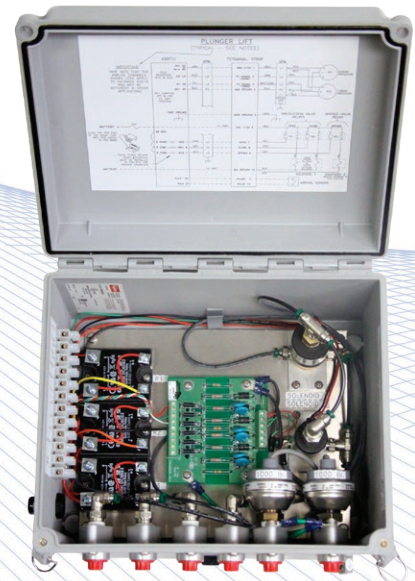
The **SCI** is designed to operate self contained or pilot operated pressure regulators. It can also be used to control diaphragm actuated instrument valves.

## Plunger Lift

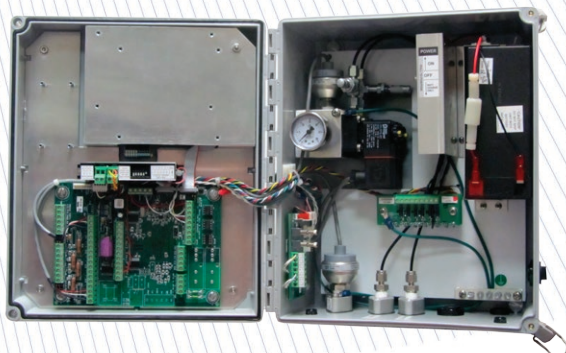
Maximizing production in a natural gas well as energy prices for both natural gas and liquids continue to rise is a primary importance to every gas well operator.

Eagle Research Corporation® has developed a solenoid actuated **Plunger Lift** Control box that, when coupled with an **XA Series™** Flow Computer, can constantly analyze and adaptively control a well's production. Through constant monitoring of casing and tubing pressures, the system can control the dropping of the plunger into the well and attempt to assure that it makes a full trip on each run.

Flow rates, production data, and plunger arrival statistics, in conjunction with tank level monitoring, give the operator a complete picture of well performance.



## Process Controller



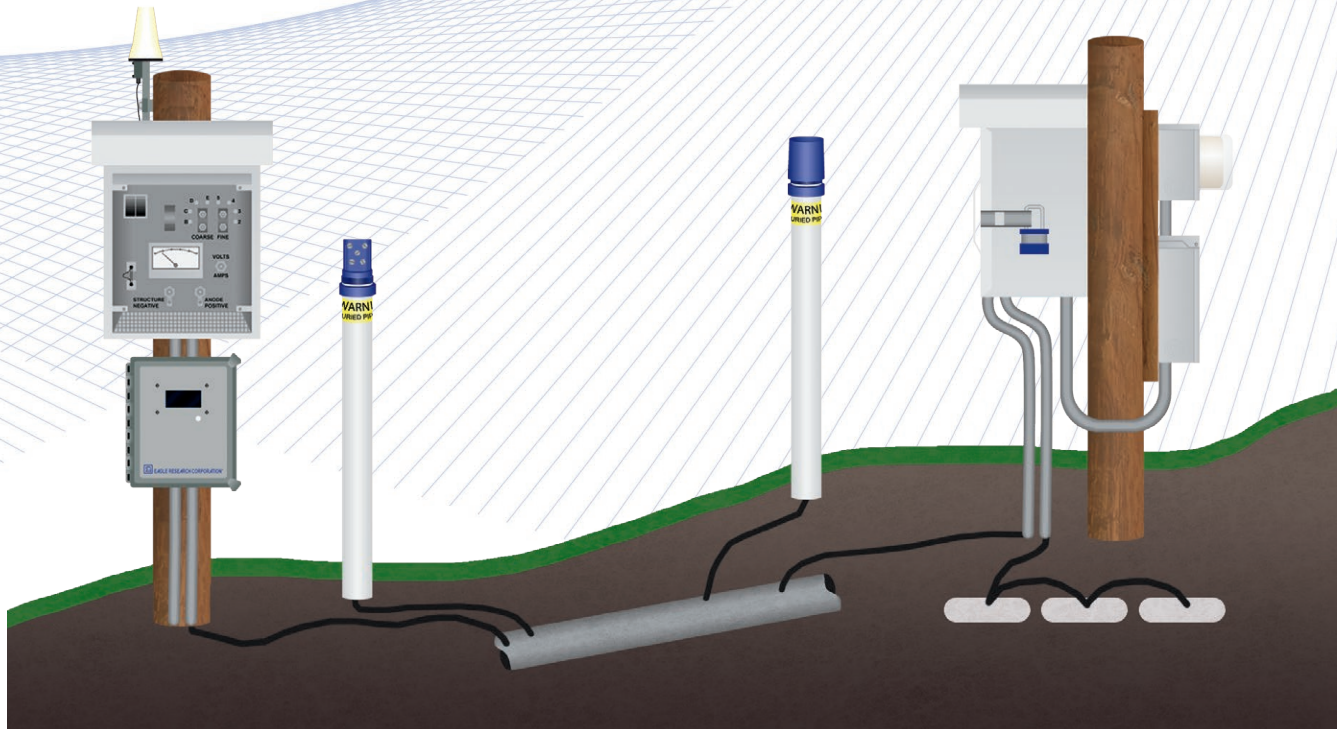
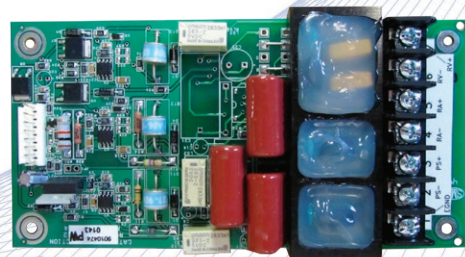
The **Process Controller** is a standalone PID controller with pneumatic or current analog output options. The Process Variable Inputs are Pressure, Temperature, DP, Pulses or an AGA calculation of flow, and the PID logic is performed electronically. The output options are 4-20 mA current loop or pneumatic valve command (3-15 or 6-30 PSI), or MODBUS®. A built-in battery allows continued control with DC power loss. Stand alone or remote set point change options are available. Power options include 12 or 24 volt A/C or solar supplies.



# Cathodic Protection

The **XARTU/1-CP™** is designed to give pipeline operators with buried steel pipelines up-to-date operating information and data, including:

- Proper operation of pipeline rectifiers
- Historical information for reporting purposes
  - Potential, Current, AC/DC Voltages
- Failure alarms
- Real time call out on alarm (with optional communications modules)
- Graphical trending of Pipe to Soil potentials to help identify pipeline corrosion
- Current information to assist the operator in minimizing the potential for catastrophic pipeline failures
- Historical information can be used to aide in meeting the requirements of 49CFR Part 192 for monitoring
- Remote Communications via Phone, Cellular, Radio or Satellite
- GPS Interruption



It is always our goal at Eagle Research Corporation® to assist our customers in the safe operation of their steel pipeline assets. A link to the Electronic Version of 49CFR Part 192 can be found at our website in the Links Section — [www.eagleresearchcorp.com](http://www.eagleresearchcorp.com) click on Links.



# Transfer Prover



## User-friendly features:

- Run modes for Automatic and Manual
- Menu driven Weatherproof Keypad
- Easy to read 4 Line display
- Fully supported in **Field Manager™** software

## Proving System Package Includes:

- Prover electronics **XARTU-TP™**
- Detachable high frequency pulser
- Quick connect temperature probes
- Quick connect pressure tubing
- Push button for manual operation
- Blower with quick connect 10' hose included
- Rugged case with custom foam insert
- Net weight 3M Prover only 85 lbs.
- Net weight 3M Prover (w/o Blower & Hose) only 64 lbs.

## Prover Electronics XARTU-TP™ :

- NEMA 4X enclosure with 4-line LCD and keypad
- Car charger, AC/DC charger & battery
- (2) Temperature Inputs
- (1) Pressure Inputs

## Operating Modes Supported:

- Self test mode
- Leak test mode
- Measure (proof) mode
- All calculations for measure mode are automatically done by **XARTU-TP™**

The **XARTU-TP™ Transfer Prover** is a very compact portable proving system with features including:

- Three main components—Prover Electronics, Detachable High Frequency Pulser and Master Meter
- Accurate and NBS traceable data proving data and results
- Applicable to Rotary, Turbine and Diaphragm Meter types
- Easily transportable without a dedicated vehicle or multi-person work crew
- Prover Blower using a standard AC/DC inverter
  - No gas generator or dedicated AC circuit required
- Shipped from factory with NBS Certificate of Calibration
- Automatic or Manual test modes



## Master Meter Models

Rotary models 11C, 15C, 3M, 5M, 7M

## Blower Specifications:

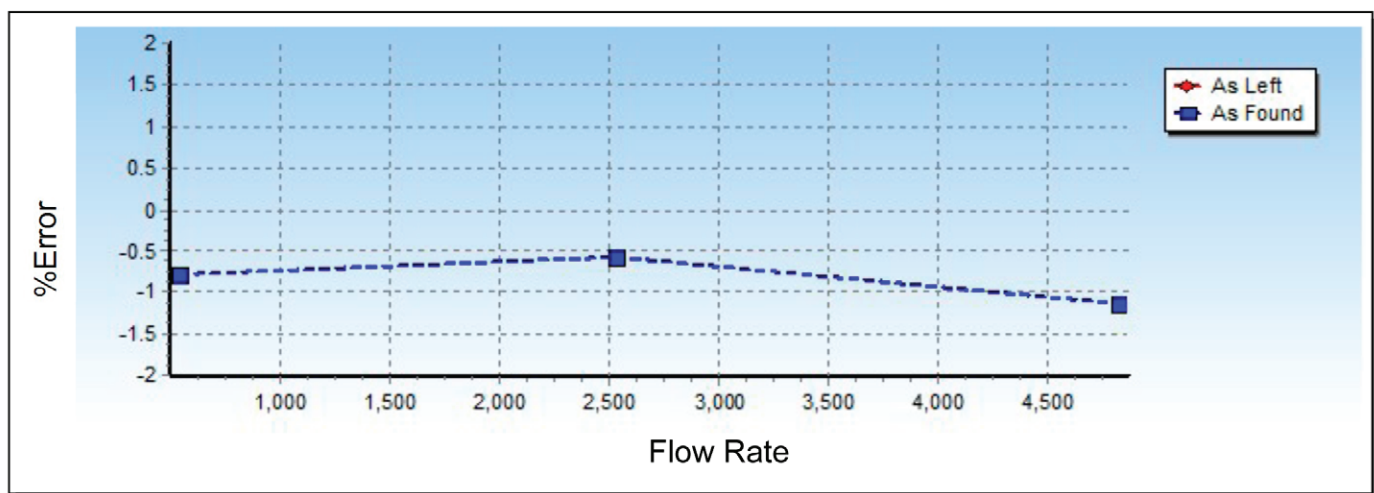
- Portable & light weight
- 110 VAC
- Net weight with hose - 21 lbs.



## SAMPLE OUTPUT

### Transfer Prover Report

Date of Proof	09/20/2010 11:17:07 AM
Operator Name	dkb
Field Meter Type	5M
Field Meter Serial #	123567
Meter ID	028563a
Meter Name	Whitman a
Temp Comp Meter	No
Output Drive	10 CF/Rev
Master Meter Type	5MR
Master Meter S/N	1033940
Master Meter Location	Up Stream
Minimum Test Time	30



As Found Data

Flow Rate	Actual Test	%Error	%Accuracy	%Proof	Diff Pres	MM Temp	FM Temp	Pres Adj	Temp Adj	TCMeter Adj
4817.1890	50.0	-1.1365	98.8635	101.1365	2.4487	69.8448	72.3072	-0.6122	-0.4629	0.0000
2529.3809	40.0	-0.5616	99.4384	100.5616	0.5274	69.9655	72.4298	-0.1318	-0.4631	0.0000
548.0109	10.0	-0.7938	99.2062	100.7938	0.0197	69.0137	72.4338	-0.0049	-0.6427	0.0000



# Remote Terminal Unit



As a standalone Remote Terminal Unit, the **XARTU/1™** can be offered with any combination of the following:

- Hoffmann Fiberglass Enclosure
- Industrial Panel Rack Mount Enclosure
- Wall/Panel Mount Enclosure
- Weatherproof External Keypad
- Internal Keypad and Display
- Multi-Line Alphanumeric Display
- Historical Trending Display
- Optional Back-Lit Display

## Standard Remote Terminal Unit Features include:

- Ruggedized Military Style (MS) Connector for RS232C laptop communication and data gathering when required
- Software programmable to handle most measurement, control, data gathering and alarm functions



## Convenience features include:

- Pluggable Terminals to streamline wiring
- Configurable as a Drop In operational replacement for many legacy RTU's
- Easily integrated into existing hardware/software systems
- Configurable as either a MODBUS® Master or MODBUS® Slave, or both if required
- Supports the full compliment of Eagle Research communications boards
- Supports most manufacturers' wired and wireless communications products
- Remotely configurable over LAN or WAN

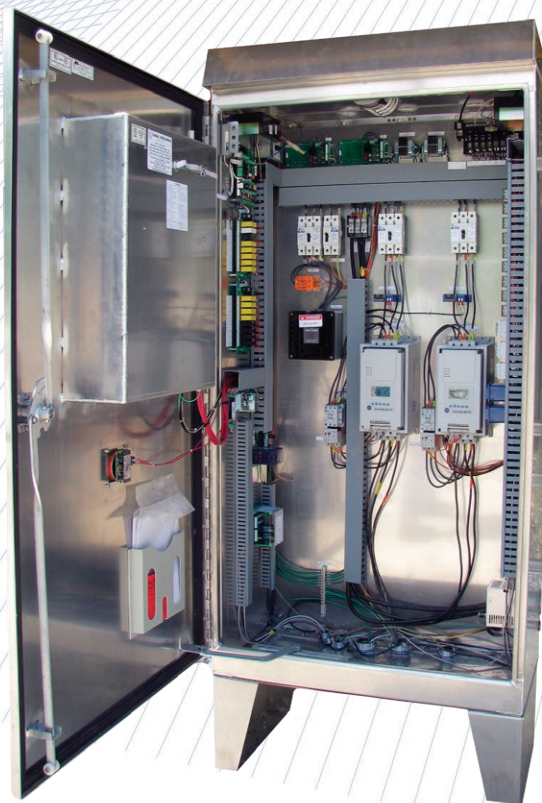






Eagle Research Corporation® operates a UL Certified Panel Shop. Having a Panel Shop allows Eagle to work with the customer from conception through installation and start up to assure that all requirements are met. Flexible RTU programming using a process oriented database configuration scheme addresses even the most sophisticated applications. Using the expanded architecture of the **XARTU/5™** processor platform provides the ability to terminate numerous analog and digital I/O points in a single location for processing. The internal keypad and display option allows the customer to easily and quickly update configuration and other set point information locally at the RTU.

The control and monitoring of water and waste water systems requires interfacing to a wide variety of equipment and ancillary systems. A properly designed panel, such as the one pictured to the right, provides an interface to multiple types of on-site equipment, i.e. pumps, motors, valves, etc. The optional custom touchscreen interface allows the user to configure and operate local equipment as well as HMI Screens depicting the processes in operation. Remote communications using a wide variety of mediums such as cellular, radio and satellite can be used for monitoring and control of the site. Programming of the RTU makes use of the highly customized Process Programming concept. Drawing from a library of over 90 individual process modules, almost any measurement or control application can be configured. Customized user screens are used to permit operators to tailor information and alarm events to suit specific application needs using the **Talon™** Family of software solutions.



The **XARTU/1™** and **XARTU/5™** processors offer customers a solid, reliable and proven hardware platform to develop applications. All Eagle Research Corporation® manufactured hardware is covered by the industry's first **Four Year Product Warranty**.



# Industrial Gases

Utilizing the **XA Series™** family in full featured Flow Computer and Remote Terminal Unit Industrial Applications is another way that Eagle shows the tremendous flexibility of our products. The **XARTU/1™** is a reliable industrial computer designed for real-time remote data acquisition, flow measurement, and control applications. The **XA Series™** can perform on board AGA3, AGA7, AGA8, AGA11 & API 21.1 compliant measurement calculations. The **XARTU/1™** Flow Computer can perform many applications including multi-run flow measurement, custody transfer flow measurement, flow control, valve switching, compressor control and status monitoring.



## Industrial Gases

- Point-of-Sale Metering
- "Premium" Billing Calculations
- In-Plant Metering
- Pure Gas Metering
  - Hydrogen
  - Oxygen
  - Nitrogen
- NIST Tables for Compressibility Corrections
- Check Metering
- Equipment Test Stand Metering
- Orifice, Turbine, Ultrasonic, and other Flow Measurement





Eagle Research Corporation® is dedicated to meeting the needs of the water/wastewater industries by providing quality products and professional services. We are uniquely positioned as a complete turnkey provider of SCADA solutions, and are widely recognized in the industry as a premier manufacturer of Remote Terminal Units (RTUs) & integrated telemetry systems.



**Talon™** Family SCADA Software for water/wastewater applications.



## **XARTU/1™ for Wastewater Industry**

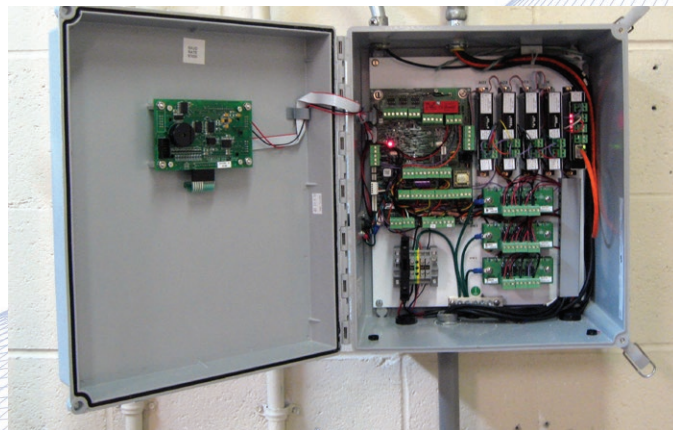
- **Lift Station RTU:** Monitors/control up to 4 pumps for a lift station with control panel
- **Retrofit - Lift Station RTU:** Telemetry retrofit to existing lift station

**Talon™** Family software provides SCADA solutions for water plant automation, water distribution, and wastewater systems. The field RTU equipment (Tank RTU, Booster Pumps RTU or Lift Station RTU) consists of Eagle Research's **XARTU/1™** processor board, keypad and display, power supply, 12 to 24 volt DC to DC converter for transmitter power, fuses, battery, optical isolation modules for digital connections, surge protection, and communication equipments (e.g. for wireless - radio; and antenna). **The XARTU/1™** can be available in fiberglass or metal enclosure, depending your applications.

The **XARTU/1™** Remote Terminal Unit (RTU) is a low-cost version of the **XA Series™** family of products. It is an intelligent, compact, rugged, and reliable industrial computer designed for real-time remote data acquisition and control applications.

## **XARTU/1 for Water Industry**

- **Tank RTU:** Monitor up to 3 Tank Levels
- **Booster Pumps RTU:** Monitor/Control up to 3 pumps with remote Tank level



### • **Filter Controller**

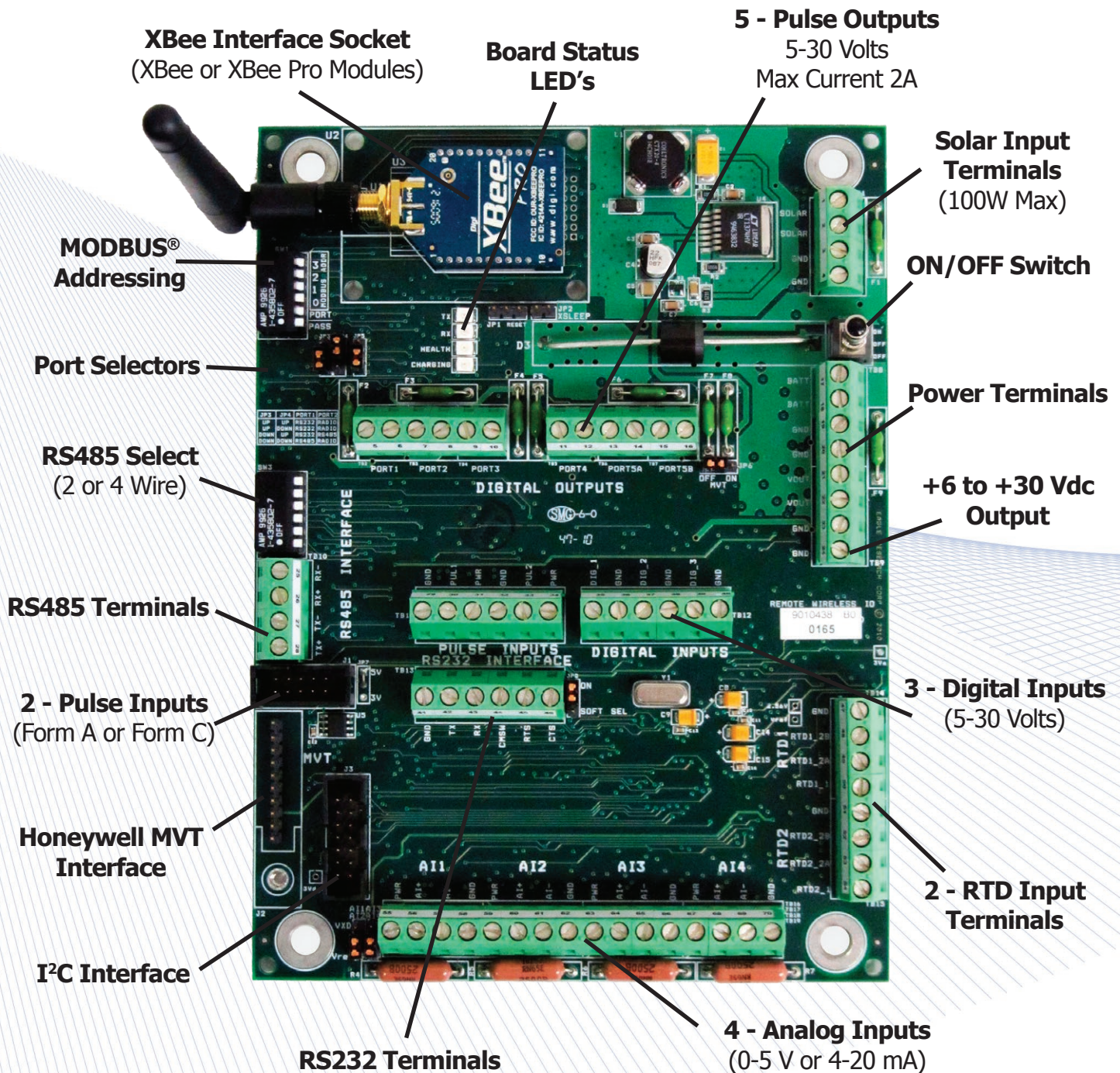
- Monitor/Control
- Filter Level
- Influent Valve
- Effluent Valve
- Surface Wash Valve
- Backwash Valve
- Filter-to-Water Valve
- Influent/Backwash Rate

### • **Plant Automation**

- Signal Interface RTU
- Rate Controller RTU
- Chemical Feed RTU
- Raw Water Pump RTU
- HS Pump RTU



## A New Solution for Remote Data Gathering...



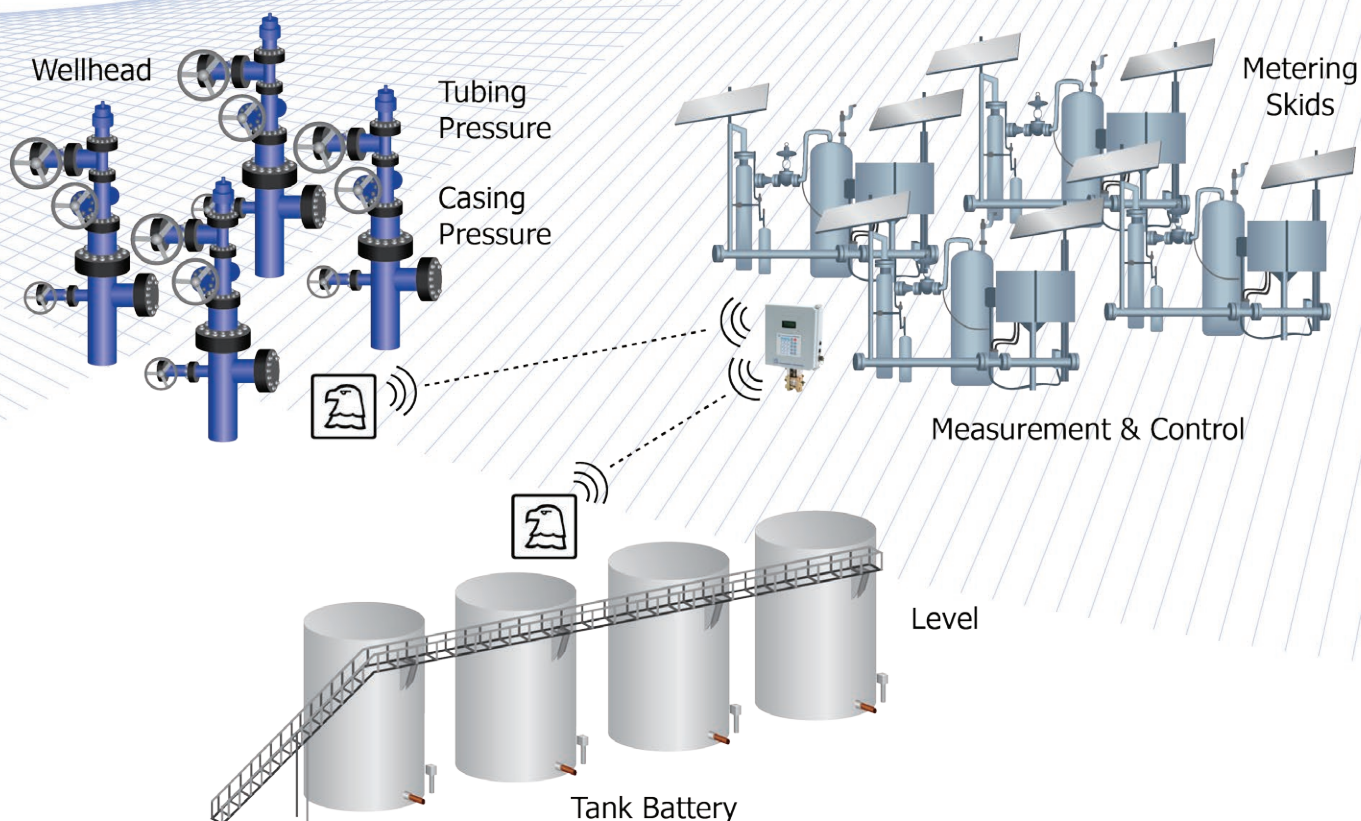
**Remote I/O - Wired or Wireless**



Eagle Research continues to meet the needs of its customers to simplify traditional hardwired sites by using the industry's leading wireless solutions such as Zigbee® and other unlicensed radios. With recent advancements in horizontal drilling practices, once simple one and two well site locations have expanded to clusters of wells on one location. In most cases, these locations cover several acres and need to not only measure natural gas, but monitor safety ESD devices, tank levels, separation facilities, and water use. The **XA™ Remote I/O** card (pictured on opposite page), replaces expensive wire and conduit runs with state of the art wireless solutions that support Mesh as well as Point to Multi-Point networking. On-board processing power and advanced power management schemes make the **XA™ Remote I/O** card the smart choice for all your measurement and control applications. To add wireless to an existing location is as simple as installing the Master Radio.

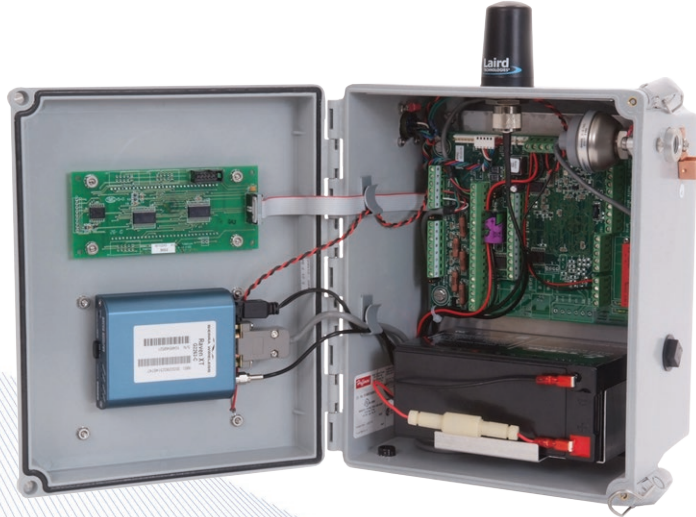


**Master Radio**





# Wireless Communications



The growth of the wireless communications industry has brought with it a corresponding level of increased complexity in choosing the most efficient and cost effective medium to transfer data from the field device to the office. Eagle Research serves as a value added resource to our customers in determining what mediums are available, who the available carriers are, and in evaluating the pricing structure for the communications type and frequency of polling ultimately chosen by the customer. All Eagle Research **XA Series™** RTU's and flow computers are shipped wireless ready or with the wireless device pre-installed

to customer specifications. Many factors determine the choice of wireless communications infrastructure, i.e. frequency of data availability and alarms, required antenna choices, and power requirements. Eagle Research is available to assist our customers with all of their needs and requirements to make the transition to wireless data as seamless and cost effective as possible.



**IP Cellular**



**Remote I/O**



**Satellite Radio**



**Licensed/Unlicensed Radio**

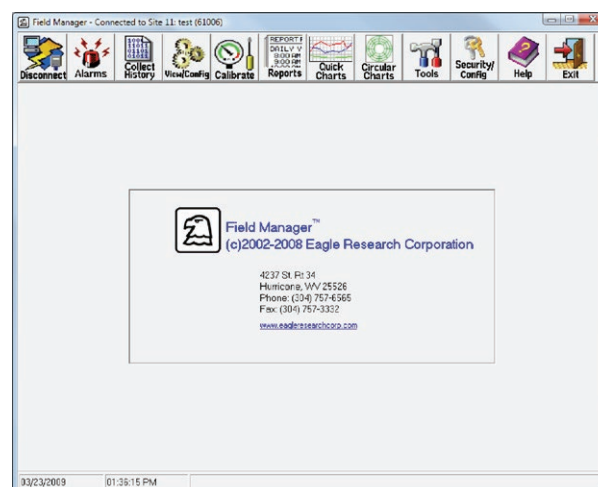


**Bluetooth Adaptor**

By working with a knowledgeable partner, options and opportunities abound to improve the "bottom line" by using tightly integrated IP and other communication methods. Eagle Research is leading the way as the natural gas industry transitions to wireless communications, and remains on the cutting edge of today's technology.

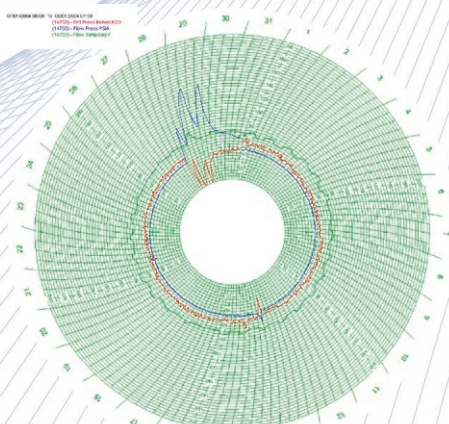


**Field Manager™** is a Windows® based configuration utility for Eagle Research products. The software provides straight-forward support for all hardware in the field, and an easy to use group of functions to assist the user in setting up and configuring the field device, gathering data, viewing alarms, and calibrating transducers. It also features a variety of other useful tools. Communication to the Eagle hardware is through an RS232 laptop cable or using the optional Bluetooth interface. A library of configuration databases simplifies the identification of standard device types in the field. The software matches the field RTU to a device type automatically and displays the appropriate set up forms for the user. **Field Manager Plus™** adds circular charting to all of Field Manager's features.

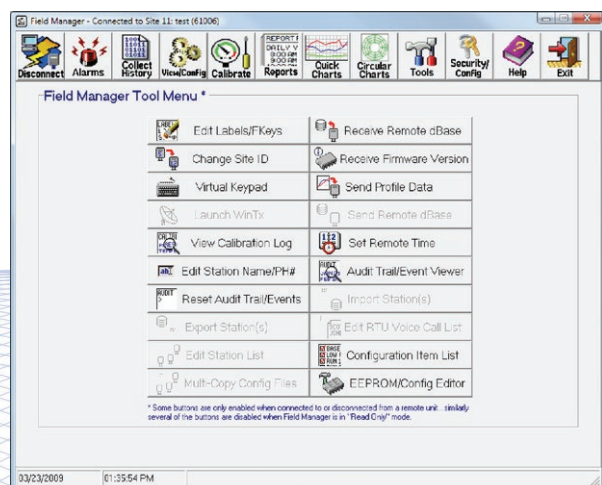


## Features & Benefits

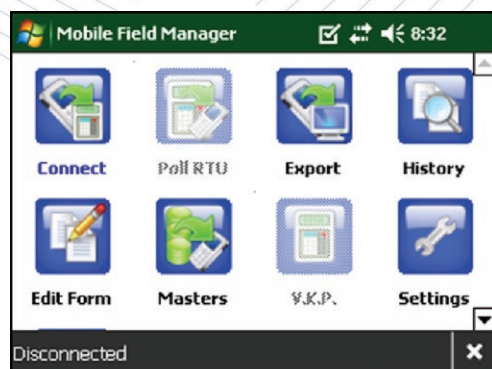
- Auto unit identification
- Calibration wizards
- Simple history collection
- Direct, dial-up, or IP based connection
- Easy tab navigation
- Data export synchronization to **Talon™**
- Smart Sled Import Utility



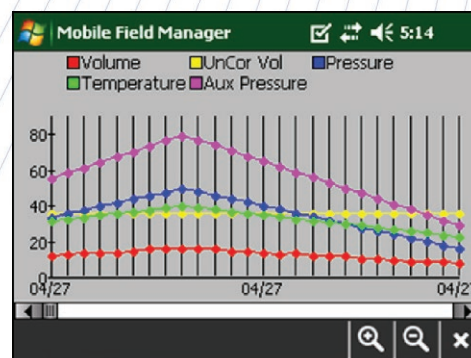
**Circular Charting for Field Manager Plus™**



## Mobile Field Manager™ Software



**Mobile Field Manager™** has been launched for the Windows™ Mobile operating system. A full set of **Field Manager™** operations have been programmed into the mobile version, including Trend Graphing capabilities. Consult with an Eagle Research Sales Representative for more details.



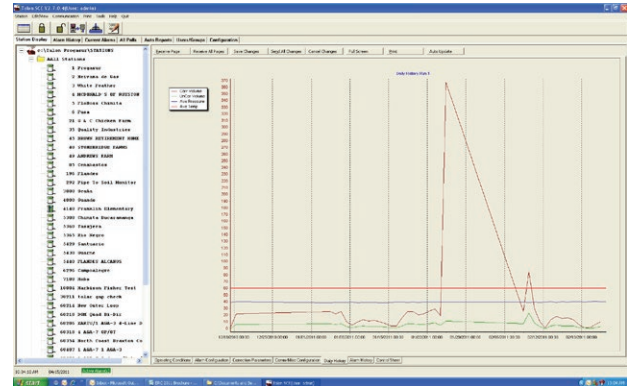
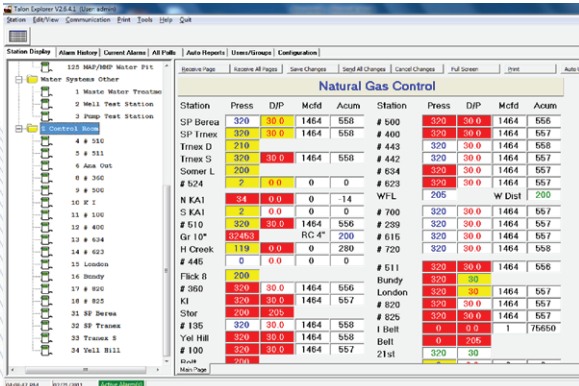
**Support Note:** Mobile Field Manager™ runs on most versions of Windows CE and Windows Mobile devices up to Version 6.5. At this time Windows Mobile 7 is not supported.



# Talon™ Software Family

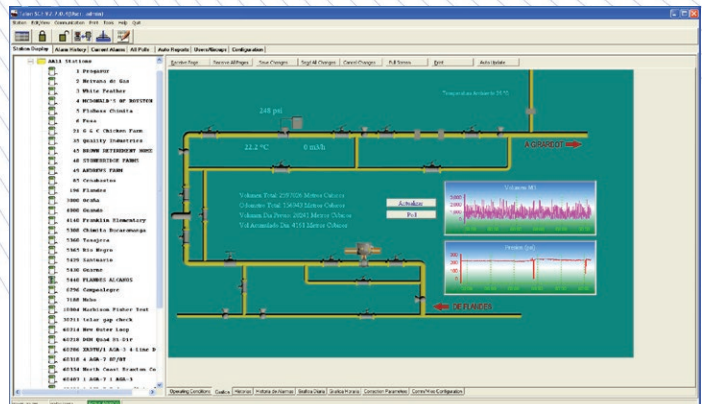
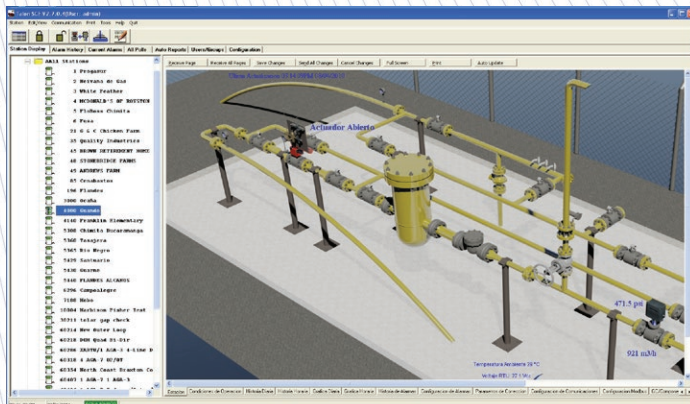
## Talon Lite™

In response to numerous customer requests for a reduced cost version of Talon SCE™ that included on screen graphics, **Talon Lite™** was launched. **Talon Lite™** is packaged with a single TCP/IP Comm Port to permit polling across the Internet with a mobile laptop, a serial communications port is included as well for land-line or direct communications. Process programming and Edit Forms may be created allowing users to create new applications or modify existing field RTU loads. Parameter changes and other set-points can be edited using the **Talon Lite™** software Edit Forms.



## Talon SCE™

**Talon SCE™** provides a single computer based software platform to perform the functions often segregated into separate SCADA and Electronic Measurement Systems. The software provides application management solutions for natural gas, water/wastewater, environmental protection, steam, and electrical applications. Industrial and commercial measurement, pressure/temperature monitoring, supervisory control, and odorization are just a few of the applications that use the software. The **Talon™** family of software gives you the ability to create a powerful host platform that can be tailored to meet specific and diverse user needs. Flexibility in the software design offers the option to purchase only the software component modules that the customer needs. **Talon SCE™** has the ability to expand the system with additional features by adding new modules in the future when customer needs change. The users and groups function affords password access/control for viewing, editing, and other administrative functions. User shift schedules can be entered for alarming and reporting through email, pages, and voice calls using the optional **Alert Server** software module. This software is uniquely suited to meet the needs of the small to intermediate size companies.

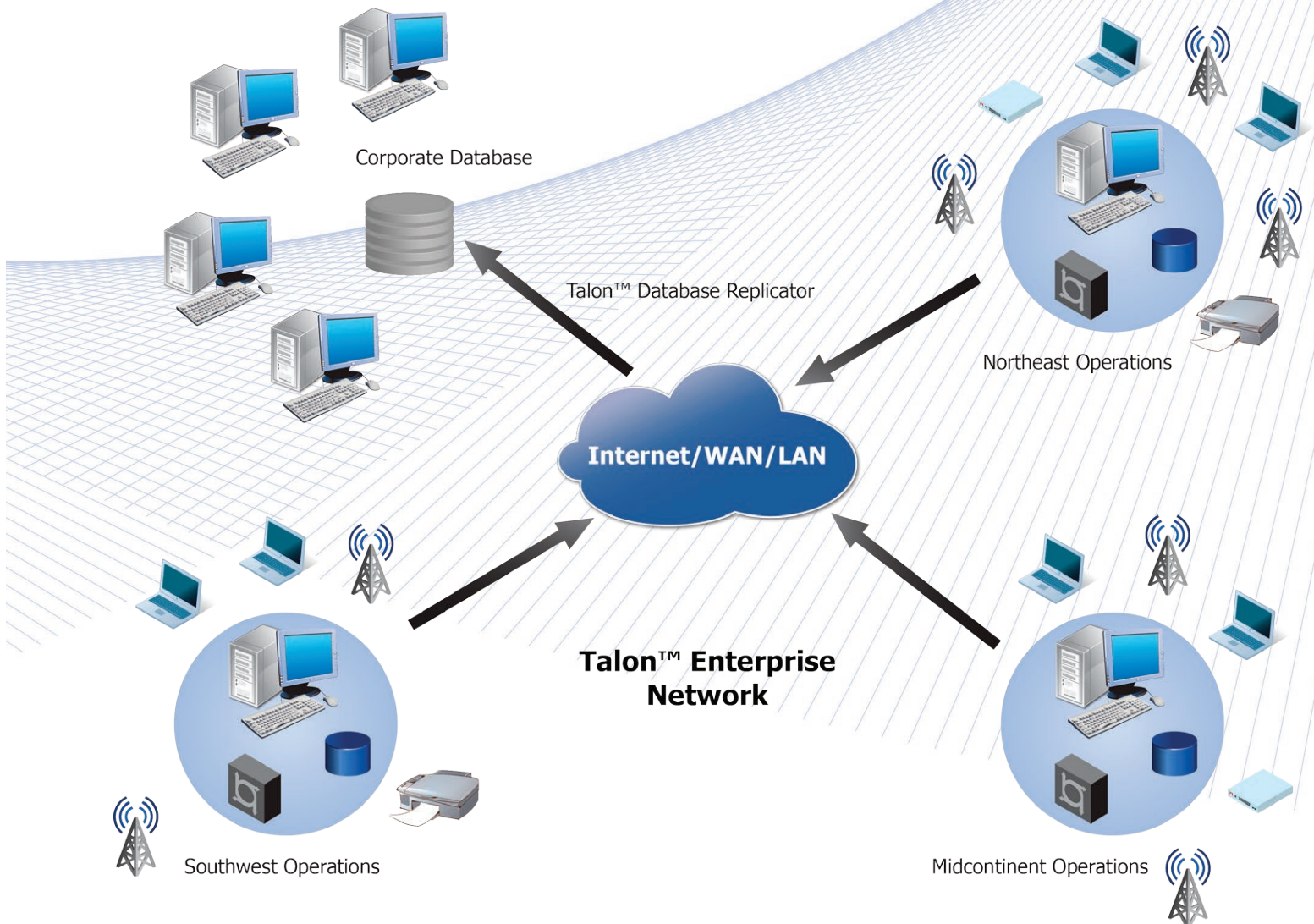




**Talon Enterprise™** provides a company-wide software network platform to perform the functions that are often segregated into separate SCADA and Electronic Measurement Systems. The **Talon™** family of software gives the user the ability to create a powerful host computing platform that meets specific and distributed data collection requirements.

A modular and flexible software design offers the option to purchase only the specific modules needed, and the ability to expand the system with additional features by adding new modules as system requirements change. Software modules can be configured for both central office and/or field operations, and then deployed across a Wide Area or Local Area Network. The users and groups function affords password access/control for viewing, editing, and other administrative functions. User shift schedules are managed in the software for alarming and reporting through email, pages, and voice calls using the **Alert Server™** module.

Having the ability to distribute the **Talon Enterprise™** Modules across the network infrastructure puts data collection and management closer to the source of the data resulting in improved overall system performance.



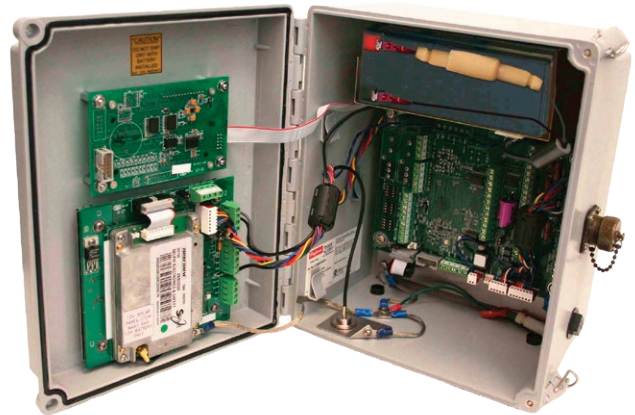
## Talon Enterprise™ Network



# Web Data Hosting

Web-based remote monitoring allows the user to collect critical information from their electronic flow measurement equipment. Eagle Research offers a web data website, that allows subscribers to view measurement and other operational data online from any computer or handheld device. Please contact an ERC sales representative for more information or simply Login with Username: [demo](#) and Password: [demo](#) at:

<http://scada.eagleresearchcorp.com>

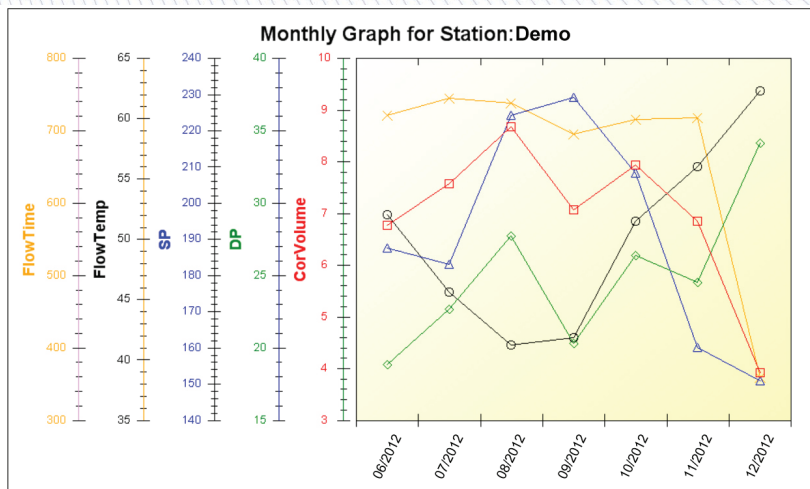


EAGLE RESEARCH CORPORATION

LOG OFF STATION LIST

STATION NAME	LAST UPDATE TIME	CURRENT DAY VOLUME	PREV DAY VOLUME	DIFF PRESSURE	PRESSURE	GAS TEMP	VOLTAGE	FLOW TIME	PRESS #2	Current Month Volume	
Station Name String	4/21/10 02:49 PM	24			175		12.15			288	
Demo Station #1	11/17/08 10:00 AM	48.3	1227.38	26.1	273.43	46.89	13.32	60		15007.07	
Demo Station #2	3/29/12 10:11 AM	12.31	403.19	26628	45.51	52.07	0	30.71		10862.51	
Demo Station #3	3/29/12 10:15 AM	73.23	1232.46	495586	44.3	50.4	0	60		35005.2	
Demo Station #4	3/29/12 10:12 AM	14.38	309.83	759885	45.19	60	0	40.14		8484.81	
Demo Station #5	3/29/12 12:20 PM	149.31	1172.09	39.39	45.35	54.21	13.97	60		31398.89	
Demo Station #6	3/29/12 10:11 AM	72.62	169.89	281576	50.58	54.28	0	40.98		4656.15	
Demo Station #7	3/29/12 10:20 AM	55.11	113.6	271827	42.79	50.23	0	37.41		4130.45	
Demo Station #8	3/29/12 02:02 PM	19.12	65	0	97.77	60.46	13.71	8		1766.23	
Demo Station #9	3/29/12 02:03 PM	6.76	19.87	0	66.8	55.88	13.97	0		311.5	
Demo Station #10	3/29/12 10:41 AM	21.73	19.69	62.66	43.07	56.02					
Demo Station #11	3/29/12 10:43 AM	92.05	12.27	10.35	19.75	56.25					
Demo Station #12	3/29/12 10:41 AM	0	0	0	0	0					

4237 State Route 34 - Hurricane, WV 25526 - 304.757.6565 - 1-877-757-6565



- **Graphing** - graphs the data by selecting the Station of interest, choosing the date range and variables to display, and clicking Graph.
- **Zoom In/Out** - allows for certain areas of specific interest
- **Pan** - helps move around the data easily.
- **Automatic Scaling** - keeps the data of interest in an easy to read format for evaluation of trends and relationships of the field data.

Typically 40 Days of hourly data are stored in the RTU itself and the historical data is only limited by available disc space on the Host system. Some **XARTU™** databases even store data down to the minute when necessary.



Eagle Research proudly offers the industry's first **Four Year Manufacturer's Product Warranty**. Since 1976, Eagle has been providing quality service and support for the products we manufacture. We believe in our products. All hardware is covered by a four year warranty when complying with our warranty standards.

The service and support departments are dedicated to better assisting the customer in the field, and providing the highest level in technical support. Optional 24/7 support plans are available and customized to meet the needs of every company.

Email [support@eagleresearchcorp.com](mailto:support@eagleresearchcorp.com) or call toll-free **1-877-757-6565** for technical assistance.



## Customer Training



Training is available on all hardware and software products, and is structured so that customers can attend the sessions that are most relative to their level of knowledge of the hardware or software being taught. Depending on the number of employees that a customer may wish to have trained, Eagle can provide customized modules tailored to a specific requirements and taught at the customer's facility to minimize employee travel time and expense. Hands-on training is also available on a variety of products in the field such as the

Transfer Prover. During training, attendees are provided with the necessary manuals, hardware, cables and software to accomplish the training requirements. Attendees should bring a laptop computer to the training sessions. Sessions will typically last between two and three days when held at Eagle Research facilities. Many of Eagle's employees regularly participate in presenting materials at the sessions, offering customers access to the in-house experts. The staff would be pleased to work with any customer to address specific training requirements.



For more information scan this QR code with your smartphone or visit ERC's website at [www.eagleresearchcorp.com](http://www.eagleresearchcorp.com)





# **EAGLE RESEARCH<sup>®</sup> CORPORATION**

4237 State Route 34 | Hurricane, WV 25526  
1.877.757.6565 | [www.eagleresearchcorp.com](http://www.eagleresearchcorp.com)