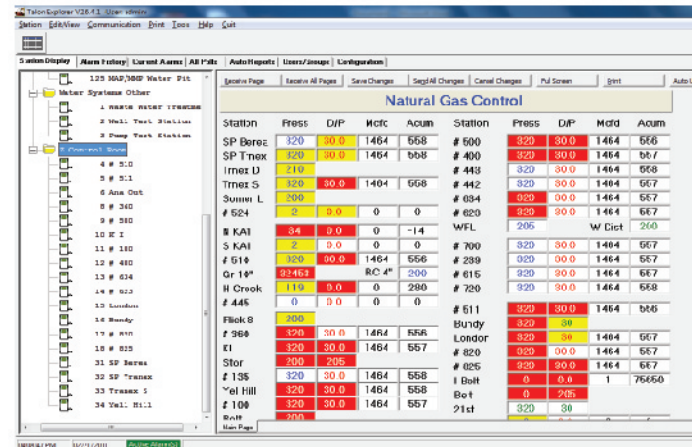


In response to numerous customer requests for a reduced cost version of **Talon SCE™** that included on screen graphics, **Talon Lite™** was launched. **Talon Lite™** is packaged with a single TCP/IP Comm



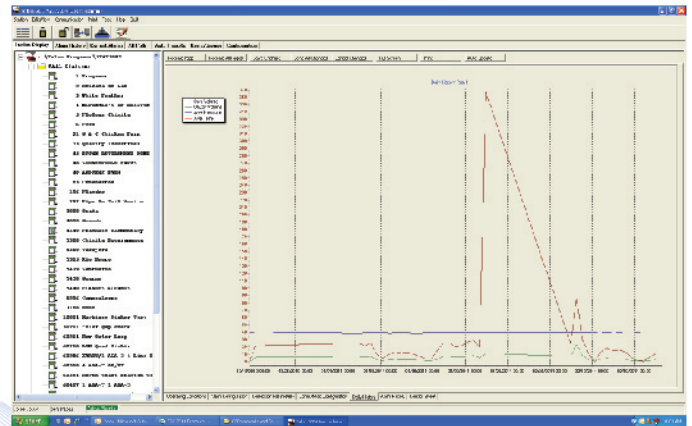
Station	Press	D/P	Mfct	Acum	Station	Press	D/P	Mfct	Acum
SP Berco	320	30.0	1464	558	# 500	320	30.0	1464	558
SP Tnex	320	30.0	1464	558	# 400	320	30.0	1464	558
Imez U	310				# 443	320	30.0	1464	558
Tmes S	320	30.0	1404	558	# 442	320	30.0	1404	557
Summ L	300				# 034	320	30.0	1464	557
# 524	320	30.0	0	0	# 020	320	30.0	1464	557
# KAI	34	0.0	0	-14	WFL	205		W Dist	240
S KAI	320	30.0	0	0	# 700	320	30.0	1464	557
# 514	320	30.0	1464	558	# 239	320	30.0	1464	557
Gr 14*	23463		RC 4*	200	# 615	320	30.0	1464	557
H Creek	119	0.0	0	290	# 720	320	30.0	1464	558
# 445	0	0.0	0	0	# 511	320	30.0	1464	558
Flick 8	300				Bundy	320	30		
# 968	320	30.0	1464	558	Londr	320	30		
EI	320	30.0	1464	557	# 820	320	30.0	1464	557
Stor	300	205			# 025	320	30.0	1464	557
# 135	320	30.0	1464	558	I Bolt	0	6.6	1	76650
Yol Hill	320	30.0	1464	558	Bot	0	205		
# 108	320	30.0	1464	557	21ct	320	30		
R-18	300								

Port to permit polling across the Internet with a mobile laptop that included access to a cellular or other mobile data plan or from a single desktop machine with network Internet access. A serial communications port is included as well for land-line or direct communications. Process programming and Edit Forms may be created as well allowing users to create new applications or modify existing field RTU loads. Parameter changes and other set-points can be edited using the **Talon Lite™** software Edit Forms.



TALON LITE™

- Windows® Operating System: Server, XP, Windows 7®
- Field Configuration
- Base Components
 - Data Trending
 - Scheduler and Auto Reports Optional
- (1) Active Serial Comm. Port and (1) TCP/IP Port



Talon Monitor™ Read-Only software is available upon request.



TALON™ FAMILY

Whether the concern is natural gas distribution, or gas pipeline transmission or production, **Talon™** gives its users the ability to create a powerful system that meets their specific needs. Its flexible design provides the option to purchase only the modules needed, and the ability to expand a system with additional features by adding new modules in the future.