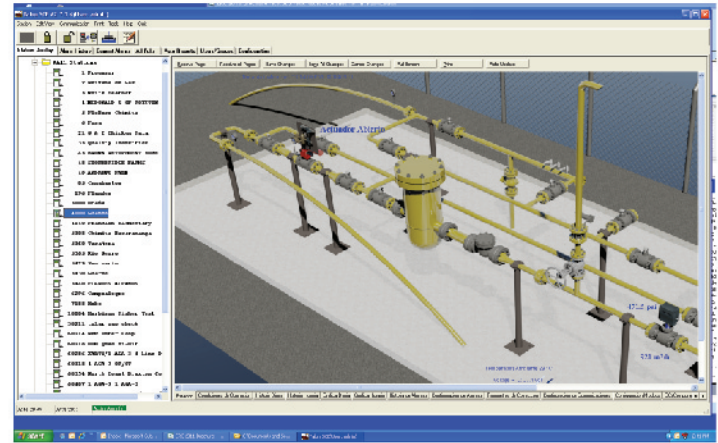


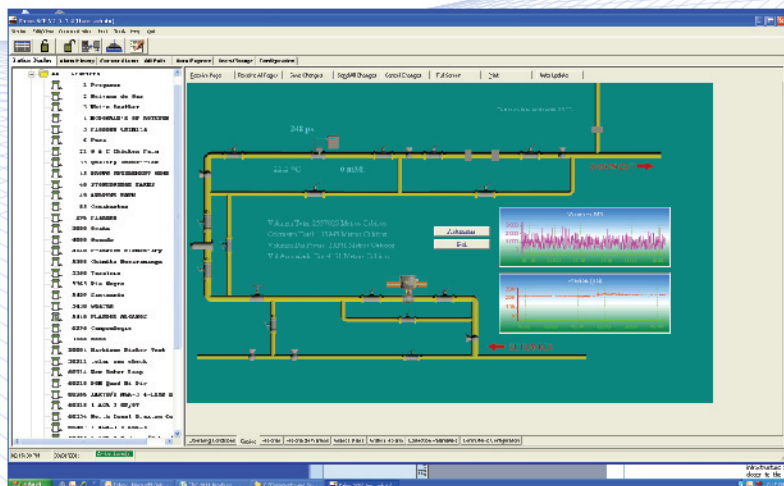
Eagle Research Corporation® designed the **Talon™** family specifically to meet the user's needs, providing software modules for both central office and field operations. **Talon™** Software Suite provides application solutions for Natural Gas, Water/Wastewater, Environmental Protection, Steam, and Electrical applications. Industrial/Commercial Measurement, Pressure/Temperature Monitoring, Supervisory Control, and Odorization are but a few of the systems that can benefit from the use of this software.

- The **Talon™** family of products has been designed as a Windows® based setup, configuration, device management, and polling tool for the Eagle Research Corporation® family of products
- Windows® Explorer style formatting and menus for station viewing provide a familiar look and feel for a shorter learning curve for use.



Talon SCE™

Talon SCE™ (Single Computer Edition) provides a single computer based software platform to perform the functions often segregated into separate SCADA and Electronic Measurement Systems. The **Talon™** family of software gives you the ability to create a powerful host platform that can be tailored and scaled to meet specific and diverse user needs. Flexibility in the software design offers the option to purchase only the software component modules that the customer needs. **Talon SCE™** has the ability to expand the system with additional features by adding new modules in the future when additional customer needs require. The users and groups function offers password access/control for viewing, editing, and other administrative functions. User shift schedules can be entered for alarming and reporting through e-mail, SMS, and voice calls using the optional **Alert Server** software module. This software is uniquely suited to meet the needs of the small to intermediate size companies. **Talon SCE™** is suitable for a reduced scale SCADA system supporting Four Serial and One TCP Port, but can be expanded for larger applications, polling multiple devices over several communications ports simultaneously.



- Windows® Operating System: Server, XP, Windows 7®
- Field Configuration
- Base Components
 - Data Trending
 - Scheduler and Auto Polling
- (4) Serial Ports and (1) TCP/IP Port as a standard



TALON SCE™

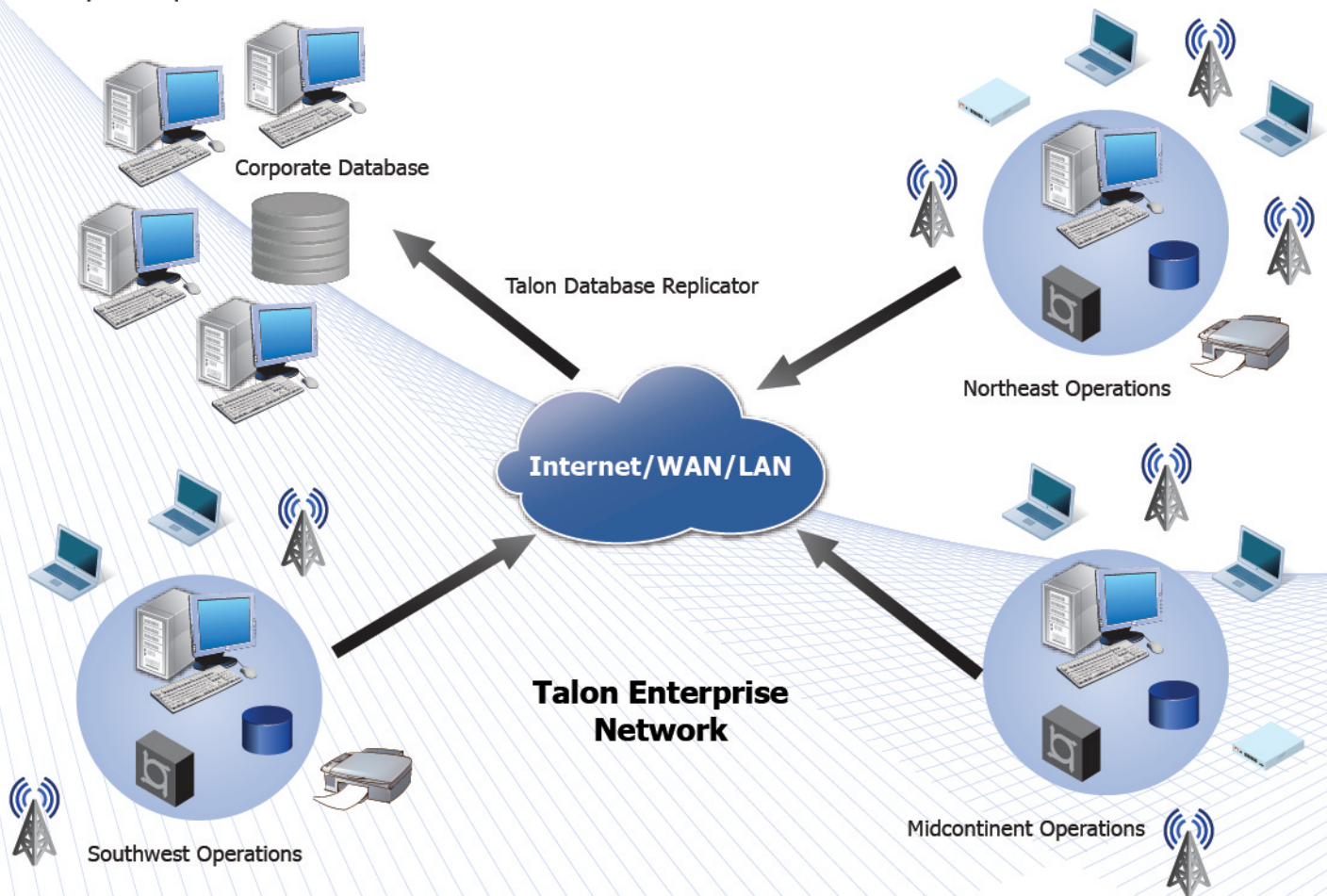


Talon Enterprise™

Talon Enterprise™ provides a company-wide software network platform to perform the functions that are often segregated into separate SCADA and Electronic Measurement Systems. The **Talon™** family of software gives the user the ability to create a powerful host platform that meets specific and distributed data collection requirements.

The modular and flexible design offers the option to purchase only the specific modules needed, and the ability to expand the system with additional features by adding new modules as system requirements change. Software modules can be configured for both central office and/or field operations, and then deployed across either a Wide Area or Local Area Network. The users and groups function offers password access/control for viewing, editing, and other administrative functions. User shift schedules are managed in the software for alarming and reporting through e-mail, SMS, and voice calls using the optional **Alert Server™** module.

In the current energy environment, many companies are scattered across state and international boundaries. Having the ability to distribute **Talon Enterprise™** Modules across the network infrastructure puts data collection and management closer to the source of the data, resulting in improved overall system performance.



TALON ENTERPRISE™

Talon Enterprise™

Optional Features:

- Voice Alert (Cry-Out)
 - Voice, Email, SMS
- Data Exporters
 - Data Replicators for Industry Standard Databases MS SQL® & Oracle®
 - FLOW-CAL® Data Exporter, Various Reporting Packages
- ActiveX Control for MS Excel®
- High Level, Distributed Process Graphics
- Web Exports for Data & Graphics
- Expandable to (64) serial and (64) TCP/IP ports
- Off-Site Comm Server (TCP/IP)
- WatchDog Module

Related Services:

- Specification Development
- Custom Screen Design, Import, and Report Writing
- System Start-up & Test
- Web Publishing
- Various Levels of Training
- Support Packages

Embedded Graphics:

- Add Graphic Objects to display data
- Add Photos & Diagrams
- Group information

Interactive Host Based Alarms:

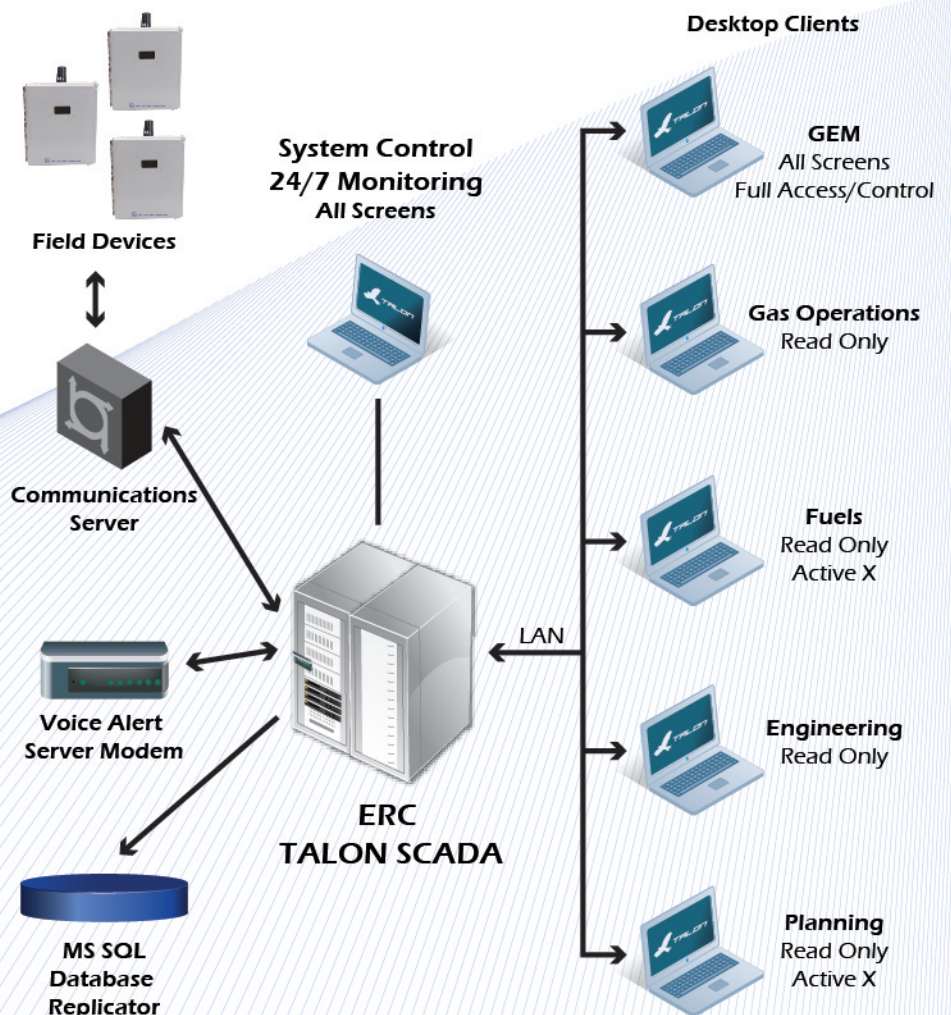
- Using the Talon™ ActiveX Option, calls can be made directly to the Talon™ Database, and then used in custom built Excel® Spreadsheets

No Limitations:

- Add Graphics, Live Data, VB Controls to build a working Annunciator Panel inside the Excel® working environment

Overview:

- Windows® Operating System: Server, XP, Windows 7®
- RTU Programming Support Package
- Multi-Level Passwords
- Modular Design for Scalable Deployments
 - Communications Server
 - Support for Single Server, Corporate, or Distributed Wide Area
 - PC Compatible Flat-File Version
 - Multi-PC LAN Support Through Drive Mapping
 - Client – Server Database Version
 - Support for MS SQL®, Access®, Oracle®
 - Support for Single DB or Distributed Wide Area
- Base Components
 - Desktop Explorer, Scheduler, Reporting Tool, Embedded Graphics, Comm Server, and Auto Reporting



Talon Lite™

In response to numerous customer requests for a reduced cost version of **Talon SCE™** that included on screen graphics, **Talon Lite™** was launched. **Talon Lite™** is packaged with a single TCP/IP Comm

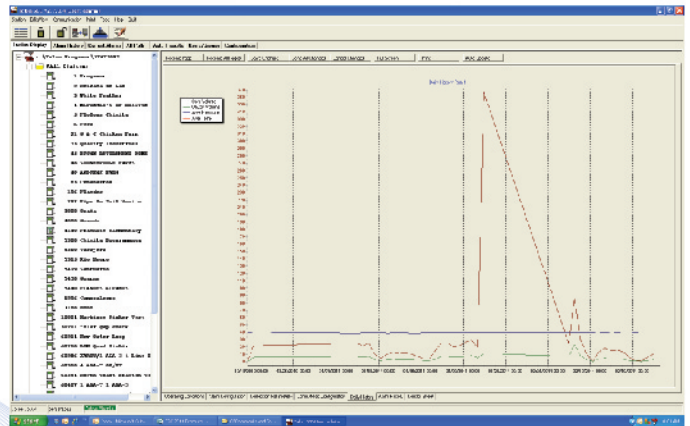
Station	Press	D/P	Mfct	Acum	Station	Press	D/P	Mgrd	Acum
SP Berco	320	30.0	1464	558	# 500	320	30.0	1464	558
SP Tnex	320	30.0	1464	558	# 400	320	30.0	1464	558
Imez U	310				# 443	320	30.0	1464	558
Tmes S	320	30.0	1404	558	# 442	320	30.0	1464	557
Summ L	300				# 034	320	30.0	1464	557
# 524	320	30.0	0	0	# 020	320	30.0	1464	557
# KAI	34	0.0	0	-14	WFL	205		W Dist	240
S KAI	320	30.0	0	0	# 700	320	30.0	1464	557
# 514	320	30.0	1464	558	# 239	320	30.0	1464	557
Gr 14*	32463		RC 4*	200	# 615	320	30.0	1464	557
H Creek	119	0.0	0	290	# 720	320	30.0	1464	558
# 445	0	0.0	0	0	# 511	320	30.0	1464	558
Flick 8	300				Bundy	320	30		
# 968	320	30.0	1464	558	Londr	320	30		
EI	320	30.0	1464	557	# 820	320	30.0	1464	557
Stor	300	205			# 025	320	30.0	1464	557
# 135	320	30.0	1464	558	I Bolt	0	6.6	1	76650
Yol Hill	320	30.0	1464	558	Bot	0	205		
# 108	320	30.0	1464	557	21ct	320	30		
RHP	300								

Port to permit polling across the Internet with a mobile laptop that included access to a cellular or other mobile data plan or from a single desktop machine with network Internet access. A serial communications port is included as well for land-line or direct communications. Process programming and Edit Forms may be created as well allowing users to create new applications or modify existing field RTU loads. Parameter changes and other set-points can be edited using the **Talon Lite™** software Edit Forms.



TALON LITE™

- Windows® Operating System: Server, XP, Windows 7®
- Field Configuration
- Base Components
 - Data Trending
 - Scheduler and Auto Reports Optional
- (1) Active Serial Comm. Port and (1) TCP/IP Port



Talon Monitor™ Read-Only software is available upon request.



TALON™ FAMILY

Whether the concern is natural gas distribution, or gas pipeline transmission or production, **Talon™** gives its users the ability to create a powerful system that meets their specific needs. Its flexible design provides the option to purchase only the modules needed, and the ability to expand a system with additional features by adding new modules in the future.