

# Web Data Hosting

Eagle Research Corporation® continues to provide the latest communications options at competitive prices. In addition to the many options available for communications, Eagle Research also provides web data hosting website, that allows subscribers to view measurement and other operational data online from any computer or handheld device. Please contact your sales representative for more information or simply Login with **Username: demo** and **Password: demo** at:

<http://scada.eagleresearchcorp.com>



**EAGLE RESEARCH CORPORATION**

**LOG OFF**

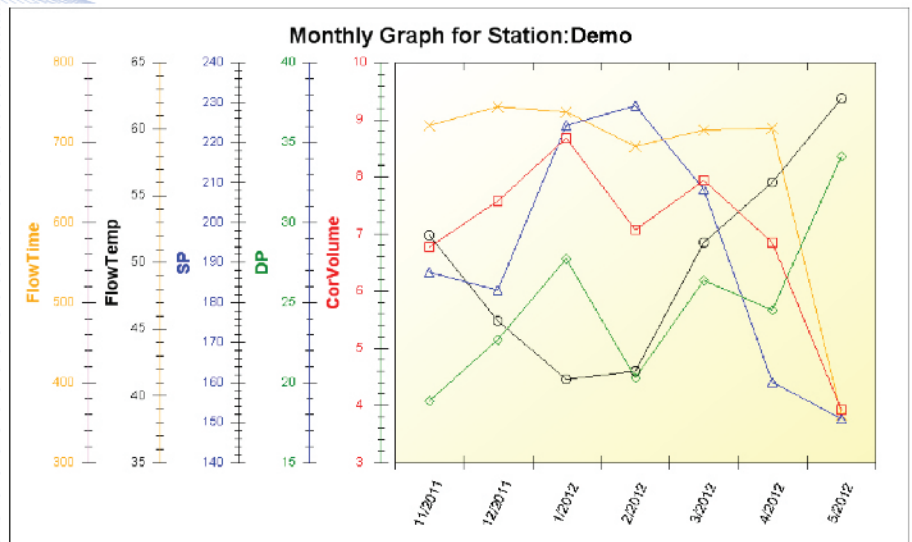
**STATION LIST**

STATION NAME	LAST UPDATE TIME	CURRENT DAY VOLUME	PREV DAY VOLUME	DIFF PRESSURE	PRESSURE	GAS TEMP	VOLTAGE	FLOW TIME	PRESS #2	Current Month Volume
Station Name String	4/21/10 02:49 PM	74			175		17.15			788
Demo Station #1	11/17/08 10:00 AM	48.3	1227.38	20.1	273.43	46.89	13.32	60		15007.07
Demo Station #2	3/29/12 10:11 AM	12.31	403.19	26620	45.51	52.07	0	30.71		10062.51
Demo Station #3	3/29/12 10:15 AM	73.23	1232.48	49568	44.3	50.4	0	80		35005.7
Demo Station #4	3/29/12 10:12 AM	14.36	309.83	75085	45.19	60	0	40.14		8484.81
Demo Station #5	3/29/12 12:20 PM	149.31	1172.09	39.39	45.35	54.21	13.97	60		31398.09
Demo Station #6	3/29/12 10:11 AM	72.82	189.89	281578	50.58	54.28	0	40.98		4888.15
Demo Station #7	3/29/12 10:20 AM	55.11	113.0	271827	42.79	50.23	0	37.41		4130.45
Demo Station #8	3/29/12 02:02 PM	19.12	65	0	97.77	60.46	13.71	0		1765.23
Demo Station #9	3/29/12 02:03 PM	678	19.87	0	88.8	55.88	13.97	0		311.5
Demo Station #10	3/29/12 10:41 AM	21.73	19.69	62.06	43.07	56.02				
Demo Station #11	3/29/12 10:43 AM	92.05	12.27	10.35	19.75	56.25				
Demo Station #12	3/29/12 10:41 AM	0	0	0	0	0				

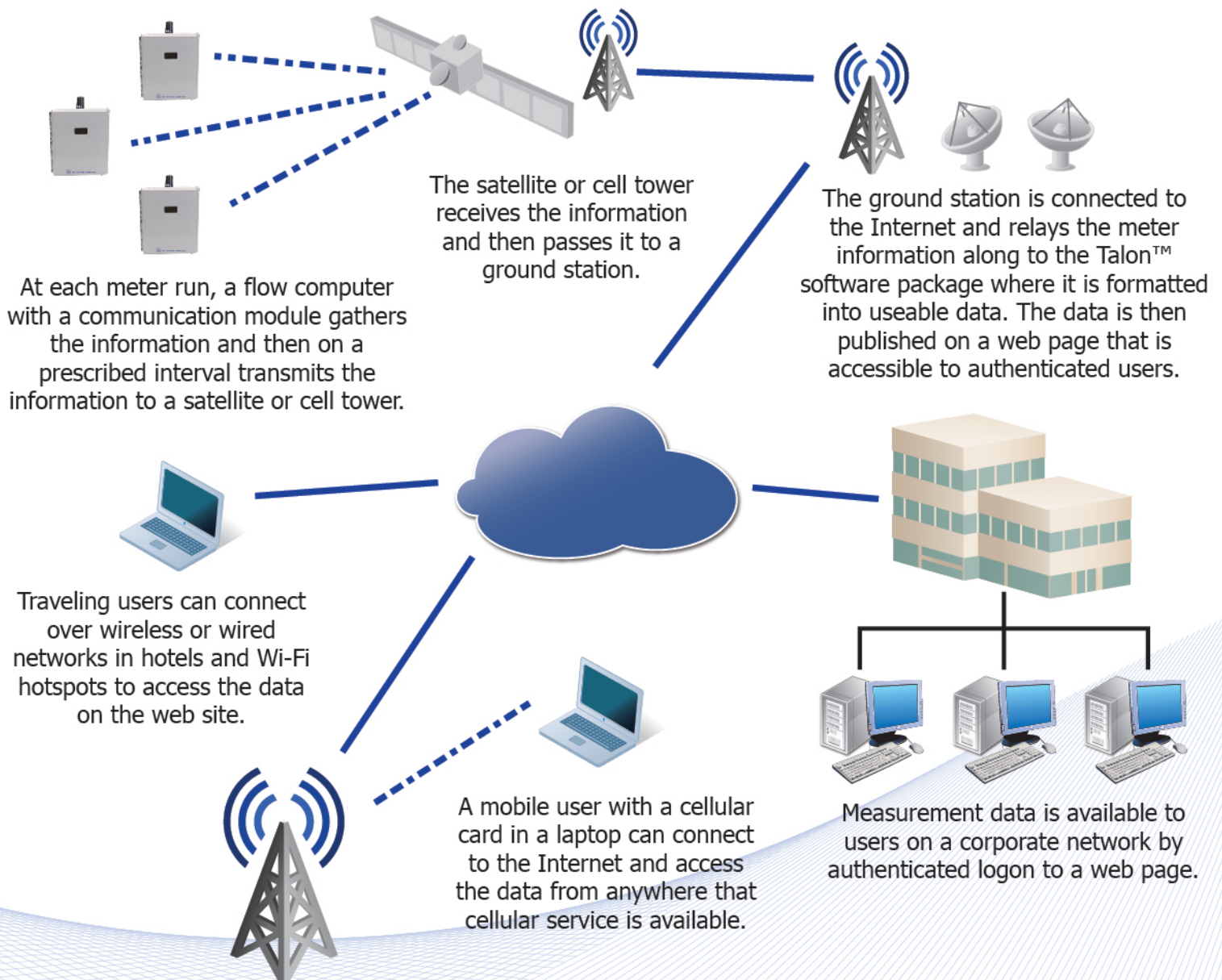
4237 State Route 34 - Hurricane, WV 25526 - 304.757.6565 - 1-877-757-6565

Data can be graphed for any station simply and quickly by selecting the Station of interest, choosing the date range and variables to display and then click Graph. The embedded graphing tools allow for Zoom In/Out on areas of specific interest and are combined with Pan tools to move around in the data easily. Automatic scaling of the variable data keeps the data of interest in an easy to read format for evaluation of trends and relationships of the field data.

Drilling down into Station data is easy on the web. Just select the Station of interest, the Time/Date Range and then simply click on the Month/Day to reach the Hourly Data. Some XARTU™ databases even store data down to the minute when necessary. Typically 40 Days of hourly data are stored in the RTU itself and the historical data is only limited by available disc space on the Host system.



# Web Data How it Works



## Web Data Updated Four Times a Day

### Instantaneous Values:

- Flow Rate
- Line Pressure
- Differential Pressure

### Hourly history records:

- Flow time
- Volume
- Average DP
- Average Pressure
- Average Temperature
- Instantaneous Voltage

