



Gallus 2000 GAS METER

Distributed By

Meter, Valve & Control
877-566-3837



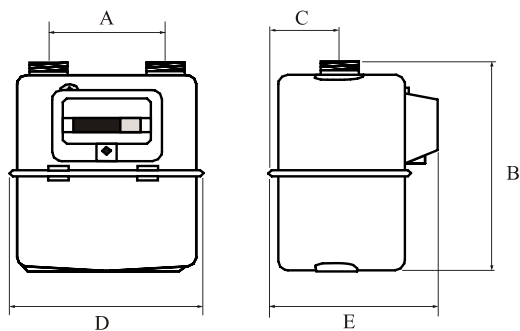
- Compact Size
- Pulse Output
- Fire-resistant Construction

The Gallus 2000 is made to measure accurately the volumes of natural gas used for domestic appliances. The pulse generator can then send the data to required devices for volume totalization.

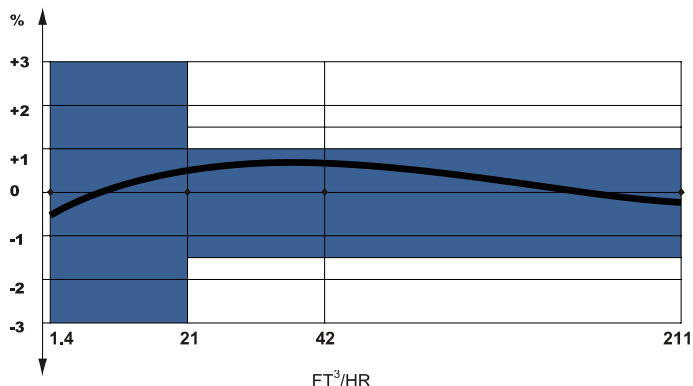
Technical Characteristics

Use.....Natural gas and LPG*
 Cyclic volume 0.42ft³
 Operating temperature-4° F to +104° C
 Storage temperature.....-40° F to +140° C
 * please contact us for any other type of gas.

Maximum Operating Pressure7.25 PSI
 Measuring range.....Qmin 1.4 ft³/h Qmax 211 ft³/h
 Pulse generator..... Standard 1 ft³ per pulse
 Pulse transmitter..... LF-system, 12 Vdc max
 10 mA max, standard 1 ft³/pulse



Typical accuracy curve



Meter Case Material	A in	B in	C in	D in	E in	Wt lb	Connection Threads
STEEL	4.3	8.9	2.6	7.4	6.5	3.2	½" NPT