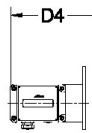




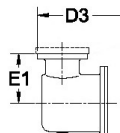
**ROMET**

Distributed By  
**MVC**  
 Meter, Valve & Control  
 877-566-3837

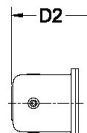
# Rotary Gas Meters



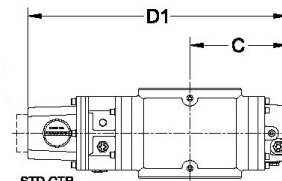
AdEM



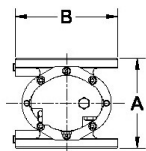
STDID / DCID



STD CTR  
END INDEX



STD CTR  
SIDE INDEX



METER SIZE	ANSI 125 FF FLANGE	A	B	C	D1	D1 (no Mag. Hsg)	D2	D3	D4	E1	WEIGHT (lbs)
RM1500	2"	6.75"	Ø 6.0"	3.44"	11.29"	8.83"	12.77"	13.60"	14.49"	4.00"	13-16

**RM1500 - IMPERIAL**

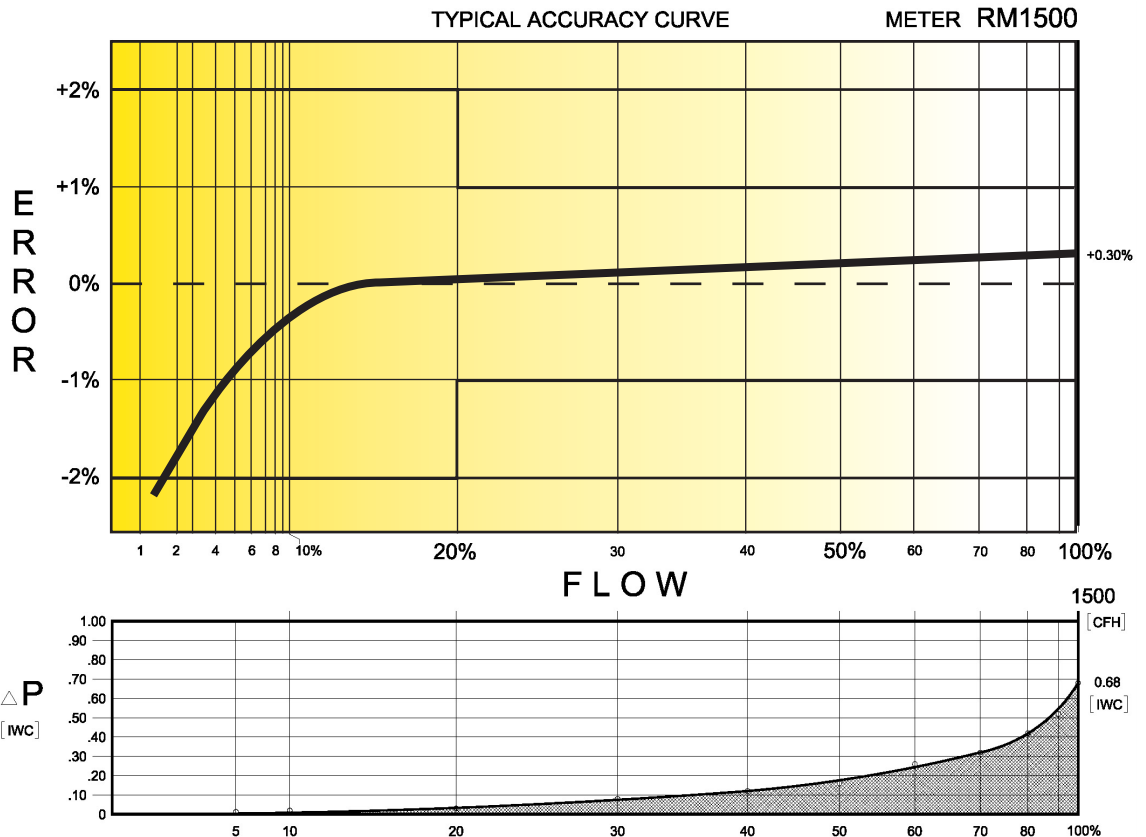
# IMPERIAL RM1500 2" FLANGE CONNECTION

## TECHNICAL SPECIFICATION

Connection (Flanged)	ANSI 125 FF	2"
MAOP	(psig)	175
Flow Capacity	(cfh)	15000
Rangeability @ $\pm 1\%$ Error		40:1
Rangeability @ $\pm 2\%$ Error		60:1
Start Rate	(cfh)	2.0
Stop Rate	(cfh)	1.5
Differential @ 100% Flow	(I.W.C.)	0.68
Instrument Drive Rate	(cf/rev)	10
LF Pulser (Optional on Std Ctr)	(cf/pulse)	10

### CORRECTED FLOW CAPACITY AND TYPICAL ACCURACY GUIDE

RM1500 METER (SCFH)	
Gauge Pressure P.S.I.G. 0.25	RM1500 Qmax = 1500ft <sup>3</sup> /hr
2	1568
5	1976
10	2485
15	2994
20	3503
25	4012
50	6558
75	9104
100	11650
125	14196
150	16741
175	19287



# ROMET

The values quoted are typical of normal production. They do not constitute a specification. Romet Limited reserves the right to change any information in this literature without notice. All of the information and data in this literature has been carefully compiled and thoroughly checked.