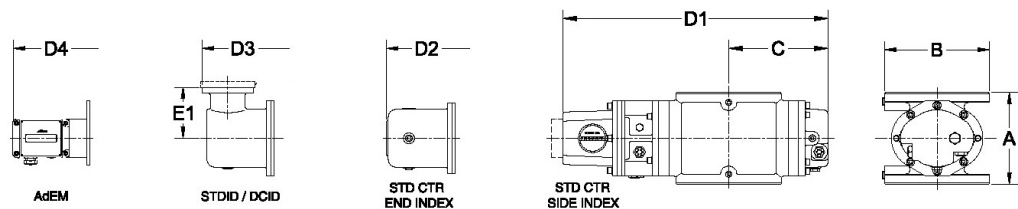
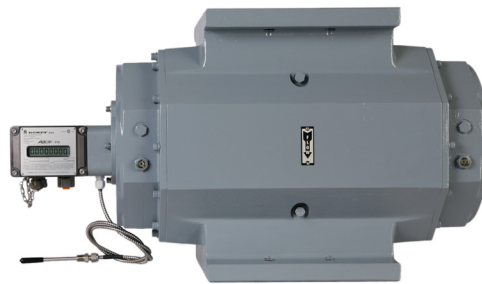




ROMET

Distributed By
MVC
 Meter, Valve & Control
 877-566-3837

Rotary Gas Meters



METER SIZE	ANSI 125 FF FLANGE	A	B	C	D1	D2	D3	D4	E1	WEIGHT (lbs)
RM38000	8"	16.00"	11.25"	11.37"	25.83"	27.31"	28.09"	29.03"	4.00"	155

RM38000 - IMPERIAL

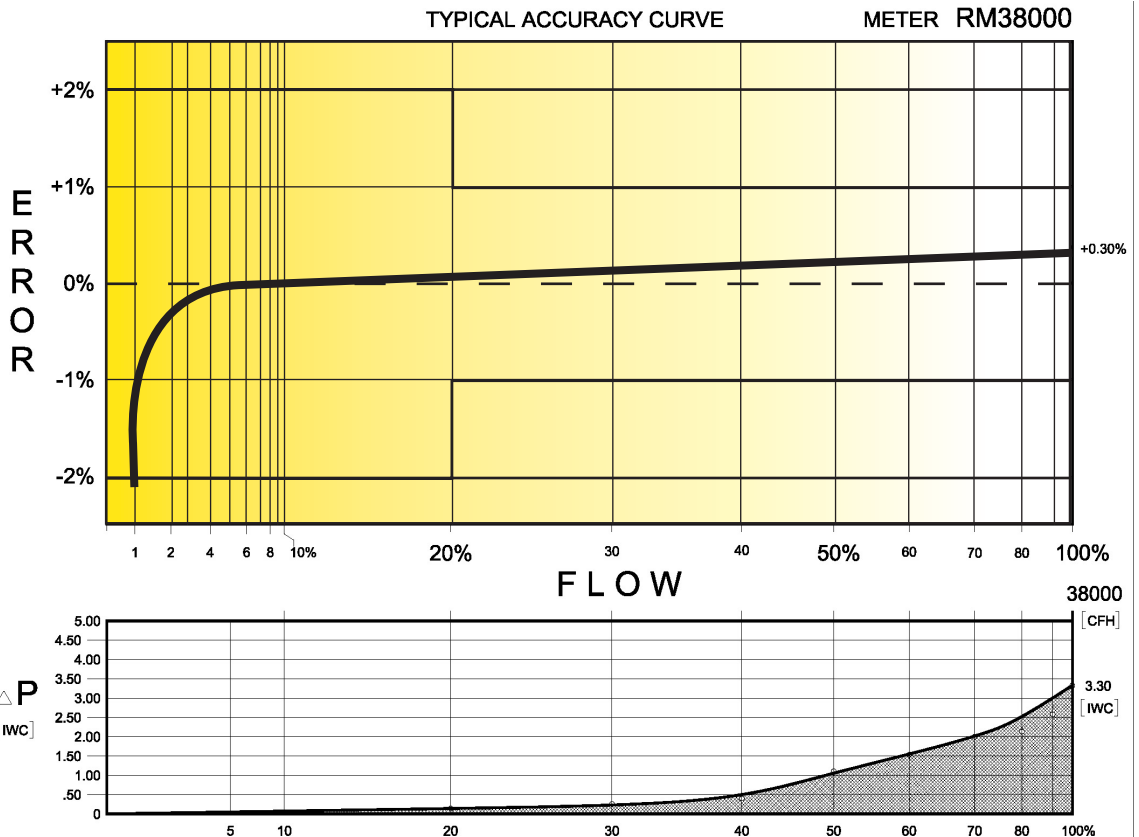
IMPERIAL RM38000 8" FLANGE CONNECTION

TECHNICAL SPECIFICATION

Connection (Flanged)	ANSI 125 FF	8"
MAOP	(psig)	175
Flow Capacity	(cfh)	38000
Rangeability @ ± 1% Error		120:1
Rangeability @ ± 2% Error		250:1
Start Rate	(cfh)	22.0
Stop Rate	(cfh)	14.0
Differential @ 100% Flow	(I.W.C.)	3.30
Instrument Drive Rate	(cf/rev)	100/1000
LF Pulser (Optional on Std Ctr)	(cf/pulse)	100/1000

CORRECTED FLOW CAPACITY AND TYPICAL ACCURACY GUIDE

RM38000 METER (SCFH)	
Gauge Pressure P.S.I.G. 0.25	RM38000 Qmax = 38000ft ³ /hr
2	39728
5	50047
10	62946
15	75845
20	88744
25	101643
50	166137
75	230631
100	295125
125	359620
150	424114
175	488608



ROMET

The values quoted are typical of normal production. They do not constitute a specification. Romet Limited reserves the right to change any information in this literature without notice. All of the information and data in this literature has been carefully compiled and thoroughly checked.