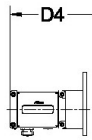




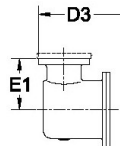
**ROMET**

Distributed By  
**MVC**  
 Meter, Valve & Control  
 877-566-3837

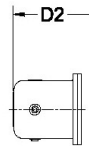
# Rotary Gas Meters



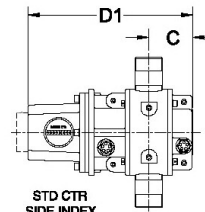
AdEM



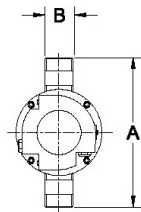
STDID / DCID



STD CTR  
END INDEX



STD CTR  
SIDE INDEX



METER SIZE	A	B	C	D1	D1 (no Mag. Hsg)	D2	D3	D4	E1	WEIGHT (lbs)
RM600	10.50"	1.5" NPT	3.08"	10.55"	8.09"	12.03"	12.86"	13.75"	4.00"	12-15

**RM600 - IMPERIAL**

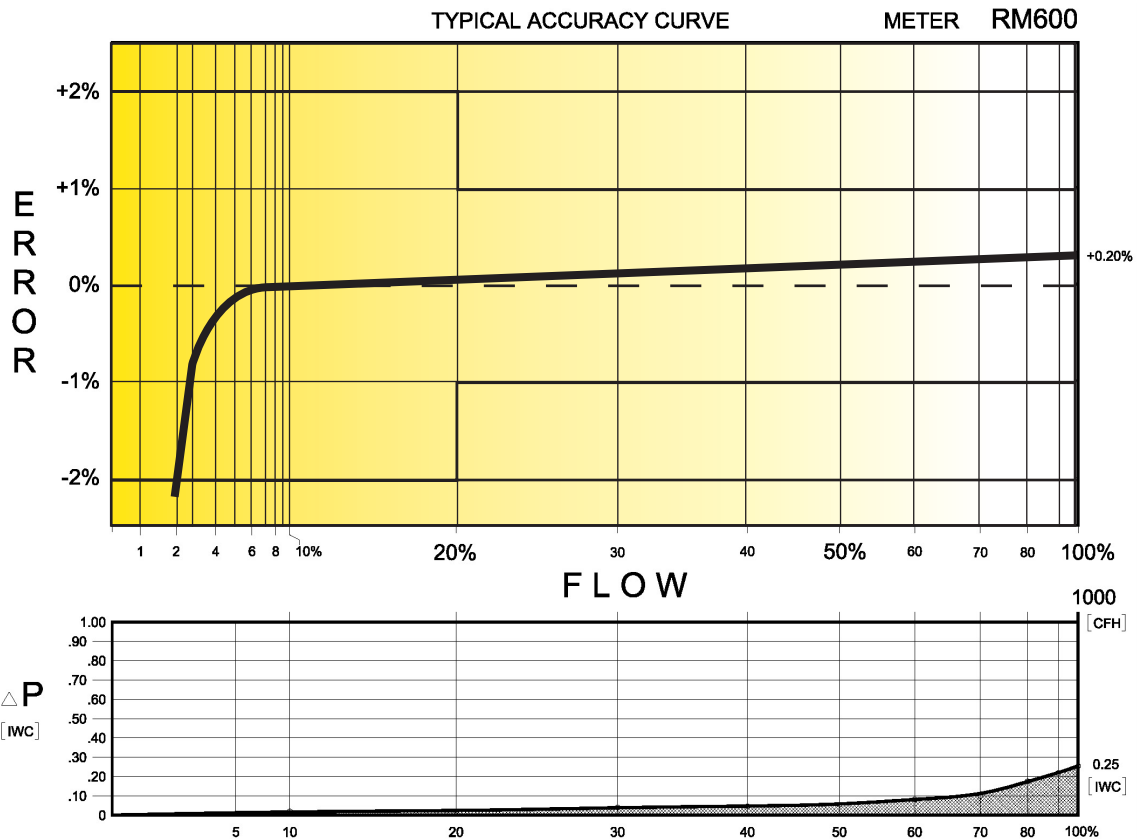
# IMPERIAL RM600 1.5" NPT CONNECTION

## TECHNICAL SPECIFICATION

Connection (Threaded)	NPT	1.5"
MAOP	(psig)	175/200
Flow Capacity	(cfh)	600
Rangeability @ $\pm 1\%$ Error		25:1
Rangeability @ $\pm 2\%$ Error		50:1
Start Rate	(cfh)	1.8
Stop Rate	(cfh)	1.5
Differential @ 100% Flow	(I.W.C.)	0.25
Instrument Drive Rate	(cf/rev)	10
LF Pulser (Optional on Std Ctr)	(cf/pulse)	10

### CORRECTED FLOW CAPACITY AND TYPICAL ACCURACY GUIDE

RM600 METER (SCFH)	
Gauge Pressure P.S.I.G. 0.25	RM600 Qmax = 600ft <sup>3</sup> /hr
2	627
5	790
10	994
15	1197
20	1401
25	1605
50	2623
75	3641
100	4660
125	5678
150	6697
175	7715



# ROMET

The values quoted are typical of normal production. They do not constitute a specification. Romet Limited reserves the right to change any information in this literature without notice. All of the information and data in this literature has been carefully compiled and thoroughly checked.