

Elster AMCO Water G4 200 CFH Gas Meter



Performance:

Max Flow Rate (cfh)	200
Min Flow Rate (cfh)	1.4
Max Working Pressure (psi)	5
Operating Temperature	-40°F - 122°F
Register Capacity (ft ³)	9999999.9

Contact Closure:

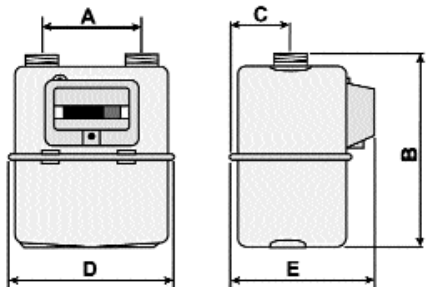
Pulses/ft ³	1/1
------------------------	-----

Electrical Ratings:

Maximum Voltage	12 VDC
Maximum Current	10 mA
Resistor	0.5 Ohm
Duty Cycle	10% On

Physical:

Case Material	Aluminum
Exterior Finish	Powder-coated
Connection Type	Sprague #1
Gland/Cable (Supplied)	6' of 4-wire
Wire Connections	
IN-Z31:	Green/brown are pulse (N/O) Yellow/white are tamper (N/C)
IN-Z62:	Orange/blue are pulse (N/O) No tamper wires



Dimensions

Dimensions (inches)					Weight	Connection
A	B	C	D	E	(lbs)	threads
6.0	8.5	2.6	7.6	6.5	4.5	Sprague #1

The G4 gas meter is a remarkably small, light-weight meter ideally suited to residential sub-metering applications. Despite its small size, the G4 meter is incredibly accurate and reliable when measuring either natural or LP gas. The G4 is classified as a 200 cubic foot per hour (cfh), non-temperature compensated gas meter with cyclometer register.

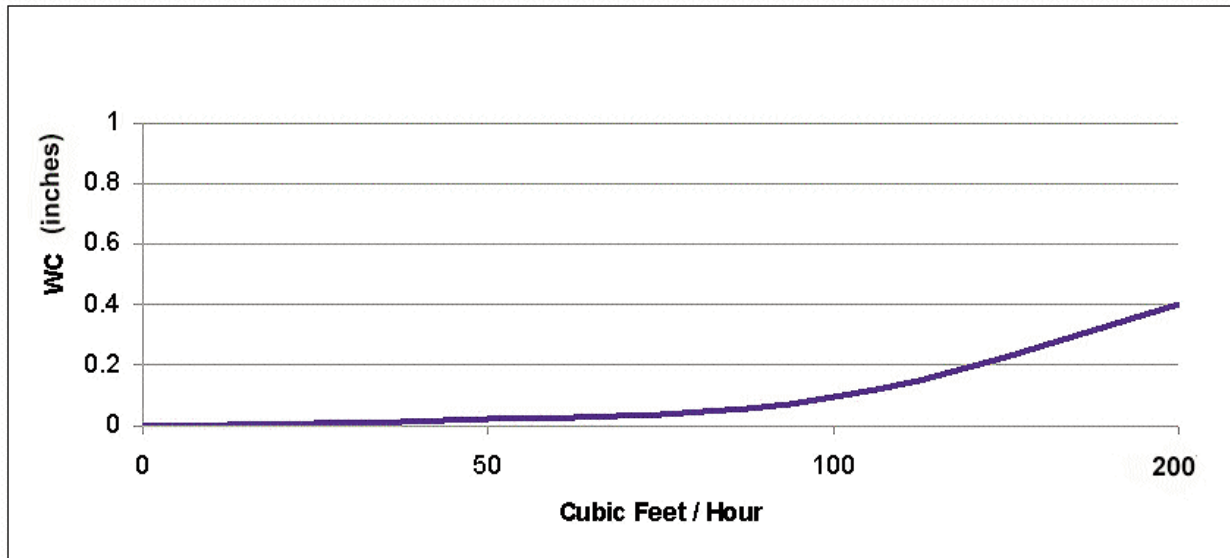
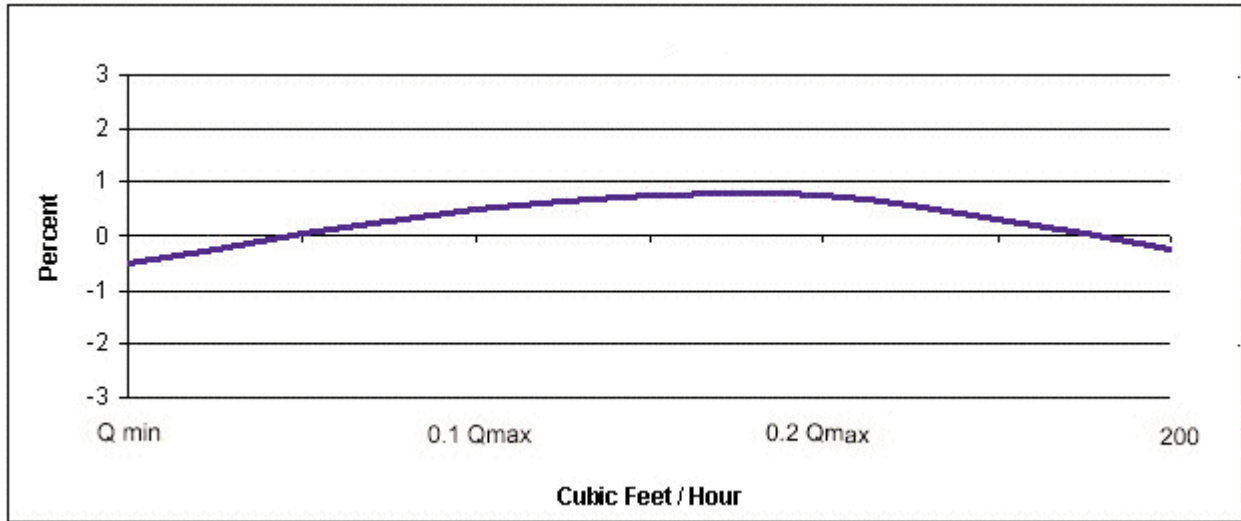
The design consists of four measuring chambers separated by synthetic diaphragms. The chambers are filled and emptied periodically and the movement of the diaphragm is transferred via a gear to the crankshaft. This shaft moves the valves that measure the volumetric gas flow. Rotations of the gear are transferred via a magnetic coupling to the index, thus assuring proper sealing of the meter's internal mechanisms. The register includes a reed pulse output for interfacing with remote (hard-wire, telephone, radio) reading and collection devices.

Distributed By



Meter, Valve & Control
877-566-3837





Elster AMCO Water, Inc.
 PO Box 1852
 Ocala, FL 34478-1852
 United States

T +1 800 874 0890
 F +1 352 368 1950

watermeters@us.elster.com
 www.elster.com

© 2007 by Elster. All rights reserved.

The company's policy is one of continuous product improvement and the right is reserved to modify the specifications contained herein without notice. These products have been manufactured with current technology and in accordance with applicable AWWA Standards.

SM-G4/06-07