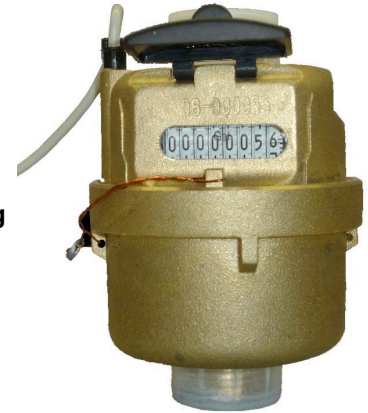


Potable Cold Water Meter 5/8" x 3/4"



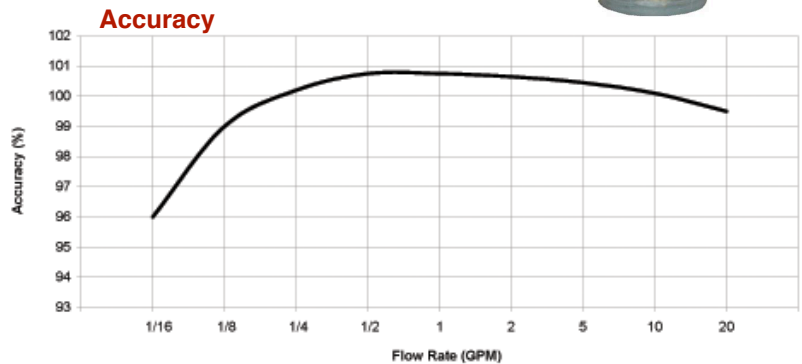
- Accurate in any orientation
- Remote ready
- Large numbers for easy reading
- Built-in strainer
- Rated to 120° F and 150 psi
- 1 pulse = 5 USG
- All bronze construction
- Polycarbonate lens resists scratching
- Great low flow
- 2-year new meter accuracy warranty
- 15-year standard warranty for body, register, and accuracy (AWWA C701)

Applications - For use in measurement of potable cold water in residential, commercial and industrial services where flow is in one direction only.

Main casing - Main casings are made of a copper alloy containing not less than 85% copper such as UNS C83600 or a similar copper alloy as listed in ASTM B584 and SDWA 141.43. The serial number is engraved on the body. The lid shows the name of the manufacturer and the case shows the direction of flow.

Register - The combined gear and register unit is fully sealed, liquid filled, with a straight odometer for visual reading. For extended life the register unit is manufactured with a direct drive assembly and gears.

Measuring chamber - Measuring chamber is an oscillating piston type (positive displacement) and is made of engineering plastic, such as polyethylene ether (PPE) per ASTM D4349, nylon (N) per ANSI/ASTM D4066, polyethylene per ASTM D1248, or polystyrene per ASTM D4549.



Specifications

Size 5/8" x 3/4"

Typical Operating Range +/- 1.5% (gpm)	1/4 - 15
Low Flow (Min. 95%) (gpm)	1/8
Max Continuous Operating Flow (gpm)	15
Max Operating Capacity (gpm)	20
Max Operating Temperature (°F)	120
Max Operating Pressure (psi)	150

Meets or exceeds latest revision of ISO 4064/1 and BS 5728/1 Class B

Physical Characteristics

Size 5/8" x 3/4"

Meter length Screw Ends (in.)	4-1/2
Meter Casing Spuds Nominal Thread Size (in.)	1
Couplings (Tailpieces) Length (in.)	2
Nominal Thread Size (in.)	3/4
Weight (lbs)	2.4

Meets or exceeds latest revision of SO 4064/1 and BS 5728/1 Class B

Meter Technology Werks, LLC.
3225 South MacDill Ave.
Suite 129-240
Tampa, Florida 32629-8171
(p) 813.334.4728 (f) 813.876.1721



Due to continuous research and product enhancements, Meter Technology Werks, LLC reserves the right to change product or system specifications without notice, except to the extent an outstanding contractual obligation exists.

email: sales@mtw.us.com
www.mtw.us.com

Submetering Guarantee for SM15 Positive Displacement Water Meters

Scope of Guarantee

This guarantee applies exclusively to Meter Technology Werks' (MTW) waterworks bronze SM15 water meters when used in potable water below 120° F in accordance with MTW's published Technical Specifications and when installed in accordance with MTW's published installation instructions, both as in effect as of the date of MTW's shipment of the product. This guarantee applies exclusively to the original multi-family purchaser when product is purchased from either MTW or its authorized distributor or installer ("Business Partner").

Materials and Workmanship

If used and installed as described above, MTW guarantees product covered by this guarantee to be free from defects in materials and workmanship for a period of 12 months after installation or 18 months after shipment by MTW or its authorized Business Partner, whichever occurs first.

Register Functionality

If used and installed as described above, MTW guarantees that its direct read registers will function for 10 years from date of manufacture by MTW, and guarantees that its pulse generator registers will function for 5 years from date of manufacture by MTW, provided they are installed indoors and not subjected to flooding during the guarantee term.

New Meter Accuracy

If used and installed as described above, MTW guarantees that SM15 meters covered by this guarantee will meet or exceed AWWA new meter accuracy standards, per AWWA specification C700-02, until the first occurring event as specified below:

1 year from date of MTW shipment or registered usage of 150,000 U.S. gallons;

Repaired Meter Accuracy

If used and installed as described above, MTW further guarantees that SM15 meters covered by this guarantee will meet or exceed repaired meter accuracy standards, as published in AWWA Manual M-6 Fourth Edition (1999), Chapter 5, Table 5.3, until the first occurring event as specified below:

5 years from date of MTW shipment or registered usage of 750,000 U.S. gallons;

Claims

Any meter or register covered by this guarantee that fails to meet the terms of the stated guarantee will be repaired or replaced, at the option of MTW, without additional charge to the customer. The customer is responsible for removing the meter or register from service, returning it to the factory service center designated by MTW, providing a written or electronic (facsimile or e-mail) claim notice, and for freight costs to and from the service center. Customer is also responsible for reinstalling repaired or replaced product.

Limits of Liability

This guarantee does not apply to meters or registers damaged by aggressive water conditions, foreign matter in water, vandalism, negligence, installation not in accordance with MTW's installation instructions, mis-application or other use not as described above, acts of God or other conditions beyond the control of MTW. This guarantee is null and void if a meter is altered by the addition of any register not manufactured by or on behalf of MTW for its specific model and size. If a meter is claimed to breach the accuracy guarantees as stated herein, the customer shall submit a certified copy of the test results at the time the meter is returned to MTW. The guarantees as to accuracy shall be void if an examination of the customer's water supply shows an unusually adverse effect on metering equipment.

Any description of product, whether in writing or made orally by MTW or its agents, specifications, samples, literature, models, bulletins, drawings, diagrams, engineering sheets or similar materials used in connection with any customer's order are for the sole purpose of identifying product and shall not be construed as an express or implied guarantee. Any suggestions by MTW or its agents regarding use, application or suitability of product shall not be construed as an express or implied guarantee unless confirmed to be such in writing by MTW.

The laws of the State of Florida, excluding its conflicts of law rules shall exclusively govern this guarantee. If any provision hereof, partly or completely, shall be held invalid or unenforceable, such invalidity or unenforceability shall not affect any other provision or portion hereof and these terms shall be construed as if such invalid or unenforceable provision or portion thereof had never existed.

*Meter Technology Werks, LLC.
3225 South MacDill Ave.
Suite 129-240
Tampa, Florida 32629-8171
(p) 813.334.4728 (f) 813.876.1721*



Due to continuous research and product enhancements, Meter Technology Werks, LLC reserves the right to change product or system specifications without notice, except to the extent an outstanding contractual obligation exists.

**email: sales@mtw.us.com
www.mtw.us.com**