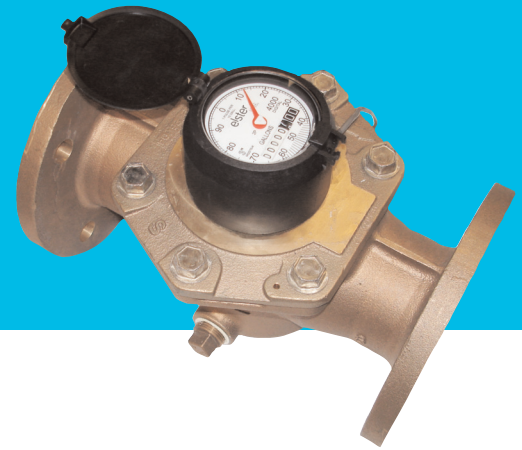


Digital Register for T4000/TS4000



Sizes 1 1/2" - 12"



Materials

- Pulser can: Copper Alloy, 90%
- Pulser lens: Glass or Plastic
- Pulse Element: 10W Reed Switch, 100 Ohm Resistor
- Gland/Cable: 9-10 ft. 3-Wire standard with glass lens for RF capability.
No cable supplied with plastic lens.

Contact Closure	(Cont/USG)	(Cont/CuFt)	(Cont/Litres)
1-1/2"	1/10	1/1	1/100
2"	1/10	1/1	1/100
3"	1/10	1/1	1/100
4"	1/10	1/1	1/100
6"	1/100	1/10	1/1000
(T4000 only):			
8"	1/100	1/10	1/1000
10"	1/100	1/10	1/1000
12"	1/100	1/10	1/1000

Registration: 1 Revolution of Sweep Hand

	USG	CuFt	Litres
1 1/2"	100	10	1000
2"	100	10	1000
3"	100	10	1000
4"	100	10	1000
6"	1000	100	10000
(T4000 only):			
8"	1000	100	10000
10"	1000	100	10000
12"	1000	100	10000

Electrical Ratings

- Maximum Voltage: 50 VDC
- Maximum Current: 50 mA
- Duty Cycle: 50±15% (Closed/Open)

Note: These units are NOT repairable.



The Digital Register may be used with Elster AMCO Water's T4000 Turbine cold water meters, sizes 1 1/2" - 12" and TS4000, sizes 1 1/2" - 6". This register provides a volt-free reed switch closure for a specific volume of metered water (see specifications). The actual pulse resolution and units of registration are printed on the dial plate.

Elster AMCO Water's Digital Register is available with either a plastic or glass lens register and can be ordered as part of the meter or as a retrofit to an existing T4000/TS4000 meter. Glass lens units are suited to long-term submersion (pit) applications and are supplied with 9-10 feet of 3-wire cable. Electrical connections are not polarity sensitive and are to be made using two wires connected in series to the internal reed switch and a 100 Ohm resistor (see schematic on reverse). This register requires power from an external source and is suitable for use with remote counters.

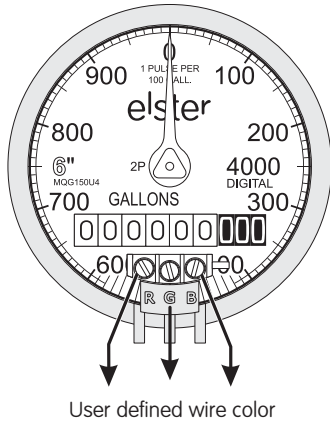


Connections

The Digital Register may be connected via two terminals, as follows:

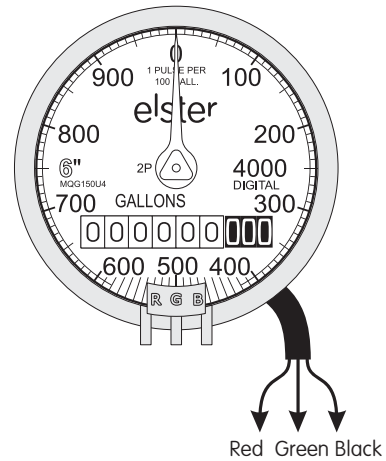
PLASTIC VERSION

(Shown with black plastic cover removed)

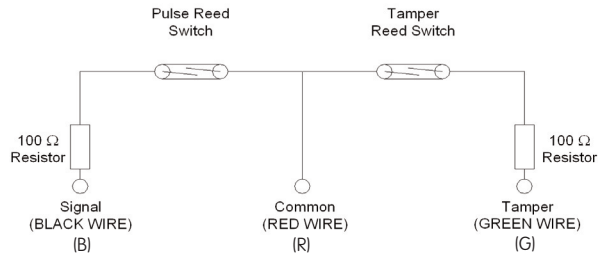


GLASS VERSION

(Shown with 3 pre-connected and potted wires for AMR applications)



A maximum cable length of 50 feet is recommended, however cable lengths up to 500 feet are possible if shielded cabling is routed away from electromagnetic sources. Cable sizes from 24-32 AWG are acceptable. Wiring is not polarity sensitive (see schematic below).



Elster AMCO Water, Inc.
 PO Box 1852
 Ocala, FL 34478-1852
 United States
 T +1 800 874 0890 (US)
 T +1 866 703 7582 (Canada)
 T +1 787 872 2006 (Caribbean)
 F +1 352 368 1950

watermeters@us.elster.com
 www.elster.com

© 2008 by Elster. All rights reserved.

The company's policy is one of continuous product improvement and the right is reserved to modify the specifications contained herein without notice. These products have been manufactured with current technology and in accordance with applicable AWWA Standards.

DR-T4000/07-08