



Badger Meter

Recordall® Compound Series Meter

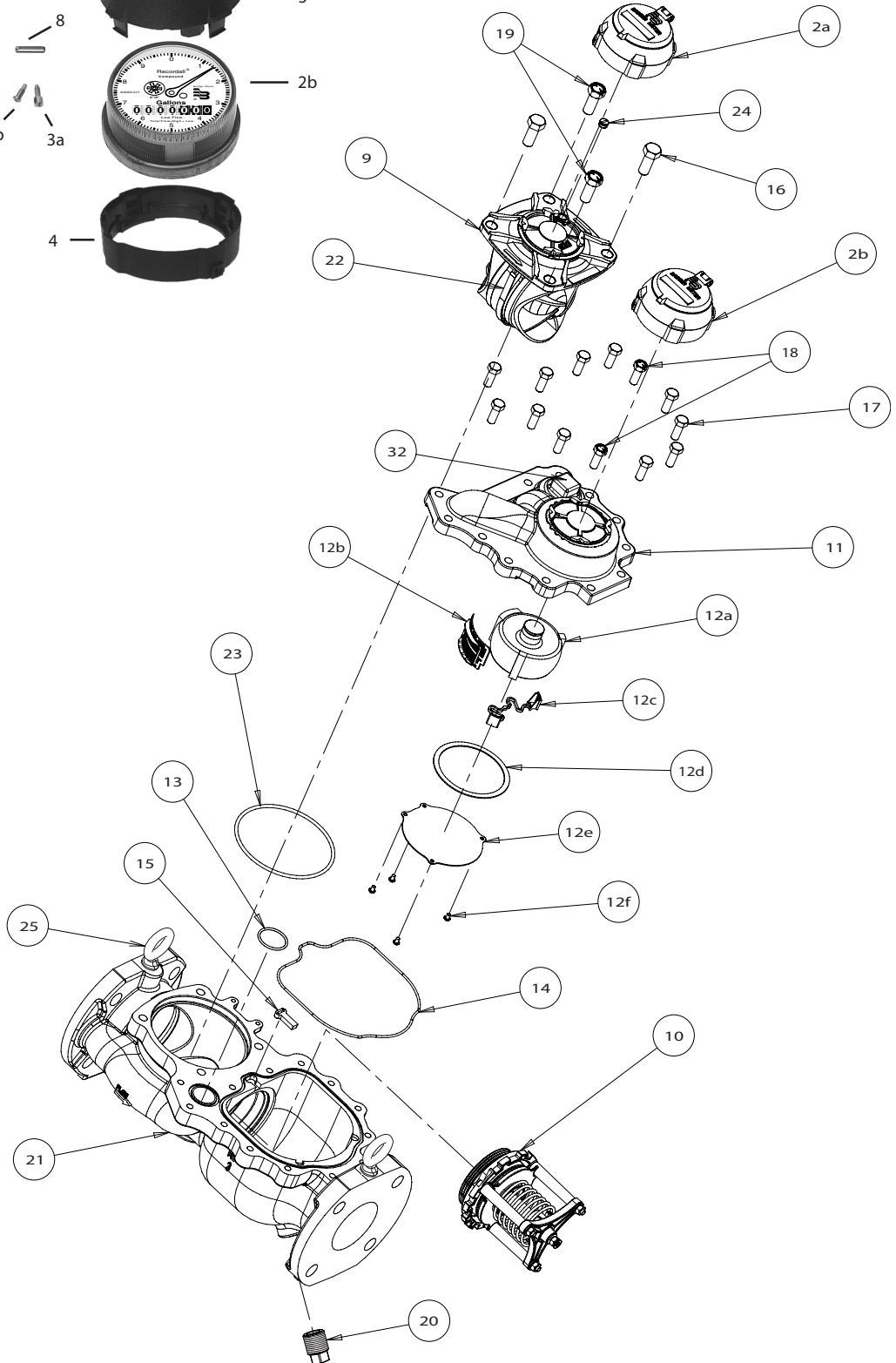
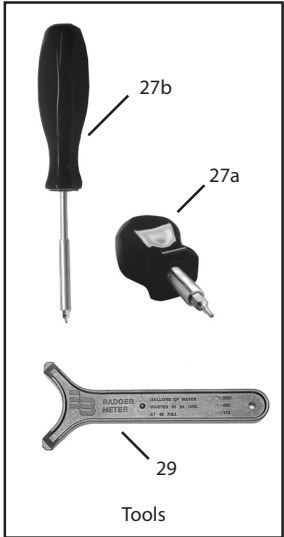
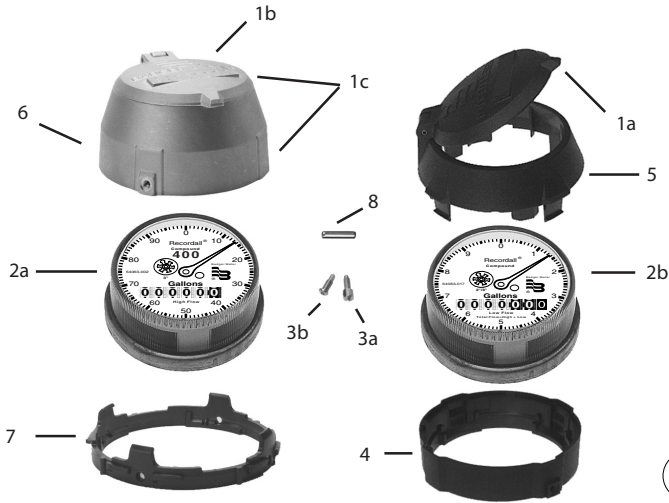
Lead-Free Bronze Alloy, Sizes 2", 3", 4" & 6"
NSF/ANSI Standards 61 and 372 Certified

Distributed By



Meter, Valve & Control
877-566-3837





Item	Description	2"	3"	4"	6"
1a	Flat lid (plastic)	62278-001	62278-001	62278-001	62278-001
1b	Flat lid (bronze)	62353-001	62353-001	62353-001	62353-001
1c	Flat lid and shroud (bronze)	62616-001	62616-001	62616-001	62616-001
2a	High flow register, 100 gal. T.C.	64063-001	64063-002	64063-003	—
2a	High flow register, 10 cubic ft. T.C.	64063-005	64063-006	64063-007	—
2a	High flow register, 1 cubic meter T.C.	64063-009	64063-010	64063-011	—
2a	High flow register, 1000 gal. T.C.	—	—	—	64063-004
2a	High flow register, 100 cubic ft. T.C.	—	—	—	64063-008
2a	High flow register, 10 cubic meter T.C.	—	—	—	64063-012
2b	Low flow register, 10 gal. T.C.	64063-017	64063-017	64063-018	64063-018
2b	Low flow register, 1 cubic ft. T.C.	64063-019	64063-019	64063-020	64063-020
2b	Low flow register, 0.1 cubic meter	64063-021	64063-021	64063-022	64063-022
3a	Tamper-resistant screw, standard (for local register, ADE, RTR)	62335-001	62335-001	62335-001	62335-001
	Tamper-resistant screw, standard (for HR-E LCD encoder, not shown)	62624-001	62624-001	62624-001	62624-001
3b	Tamper-resistant TORX® seal screw (for local register, ADE, RTR)	62516-001	62516-001	62516-001	62516-001
	Tamper-resistant TORX® seal screw (for HR-E LCD encoder, not shown)	62516-002	62516-002	62516-002	62516-002
3c	Tamper-resistant keyed seal screw, standard (for local register, ADE, RTR)	66925-001	66925-001	66925-001	66925-001
	Tamper-resistant keyed seal screw, short (for HR-E LCD encoder, not shown)	66925-003	66925-003	66925-003	66925-003
4	Plastic shroud (bottom half)	62279-001	62279-001	62279-001	62279-001
5	Plastic shroud (top half)	62280-001	62280-001	62280-001	62280-001
6	Bronze shroud (for flat lid)	62442-001	62442-001	62442-001	62442-001
7	Plastic insert for flat lid bronze shroud	62455-001	62455-001	62455-001	62455-001
8	Flat lid hinge pin	59568-003	59568-003	59568-003	59568-003
9b	Head assembly Turbo (LL)	63010-025	63010-026	63010-027	63010-028
10	Valve assembly	64128-001	64066-001	64131-001	64134-001
—	Door seal, valve assembly (not illustrated)	64075-001	64075-002	—	—
11b	Machined cover (LL)	64107-003	64070-003	64111-003	64115-003
12a	Chamber assembly	33334-023	33334-023	33334-056	33334-056
12b	Screen	64081-001	64081-001	64142-001	64142-001
12c	Chamber strap	58540-001	58540-001	58540-001	58540-001
12d	Gasket	11071-033	11071-033	59782-001	59782-001
12e	Cover plate	64080-001	64080-001	64141-001	64141-001
12f	Screw	55115-001	55115-001	55115-002	55115-002
13	O-ring EPDM,	64083-006	64083-002	64083-008	64083-010
14	O-ring EPDM,	64083-007	64083-003	64083-009	64083-011
15	Lock pawl	64078-001	64078-001	64078-001	64078-001
16	Bolt hex. hd.	55031-060	55031-116	55031-116	55031-117
17	Bolt hex. hd.	55031-060	55031-060	55031-116	55031-117
18	Seal bolt hex. hd.	25421-043	25421-043	25421-034	25421-044
19	Seal bolt hex. hd.	25421-043	25421-034	25421-034	25421-044
20	Drain plug	33879-015	33879-015	33879-015	33879-015
21a	Housing (round flanges) (LL)	64105-003	64068-009	64109-005	64113-005
21c	Housing (elliptical flanges) (LL)	64127-003	—	—	—
22	Cage seal	62924-001	62924-002	62924-002	62924-003
23	O-ring	62754-002	62754-003	62754-003	62754-004
24	Calibration plug	62793-001	62793-001	62793-001	62793-001
25	Lifting ring (optional)	62736-001	62736-001	62736-001	62736-001
27a	TORX® seal screw driver & bit (stubby)	62658-001	62658-001	62658-001	62658-001
27b	TORX® seal screw driver & bit (long)	62658-003	62658-003	62658-003	62658-003
28	TORX® seal screw driver bit (not shown)	62657-001	62657-001	62657-001	62657-001
—	Driver bit, keyed seal screw (not shown)	66925-002	66925-002	66925-002	66925-002
—	Bit driver, stubby, without bit (not shown)	62658-005	62658-005	62658-005	62658-005
—	Bit driver, standard, without bit (not shown)	62658-006	62658-006	62658-006	62658-006
29	Plastic shroud disassembly tool	62346-001	62346-001	62346-001	62346-001
30	Flange adapter kit (2" elliptical fl.)	64186-001	—	—	—
	Flange adapter kit (round fl.)	64186-002	—	64186-003	—
31	Door seal replacement tool kit	64201-001	64201-001	—	—
32	Test plug	33879-014	33879-014	33879-012	33879-012

Recordall is a registered trademark of Badger Meter, Inc. Other trademarks appearing in this document are the property of their respective entities.

Due to continuous research, product improvements and enhancements, Badger Meter reserves the right to change product or system specifications without notice, except to the extent an outstanding contractual obligation exists. © 2013 Badger Meter, Inc. All rights reserved.

www.badgermeter.com

The Americas | Badger Meter | 4545 West Brown Deer Rd | PO Box 245036 | Milwaukee, WI 53224-9536 | 800-876-3837 | 414-355-0400

México | Badger Meter de las Americas, S.A. de C.V. | Pedro Luis Ogazón N°32 | Esq. Angelina N°24 | Colonia Guadalupe Inn | CP 01050 | México, DF | México | +52-55-5662-0882

Europe, Middle East and Africa | Badger Meter Europa GmbH | Nurtinger Str 76 | 72639 Neuffen | Germany | +49-7025-9208-0

Czech Republic | Badger Meter Czech Republic s.r.o. | Matějkova 2082/26 | 621 00 Brno, Czech Republic | +420-5-41420411

Slovakia | Badger Meter Slovakia s.r.o. | Racianska 109/B | 831 02 Bratislava, Slovakia | +421-2-44 63 83 01

Asia Pacific | Badger Meter | 80 Marine Parade Rd | 21-04 Parkway Parade | Singapore 449269 | +65-63464836

China | Badger Meter | 7-1202 | 99 Hangzhong Road | Minhang District | Shanghai | China 201101 | +86-21-5763 5412

Legacy Document Number: RCS-P-1

| sales@mvandc.com | Phone: 877.566.3837 | Fax: 925.407.2903