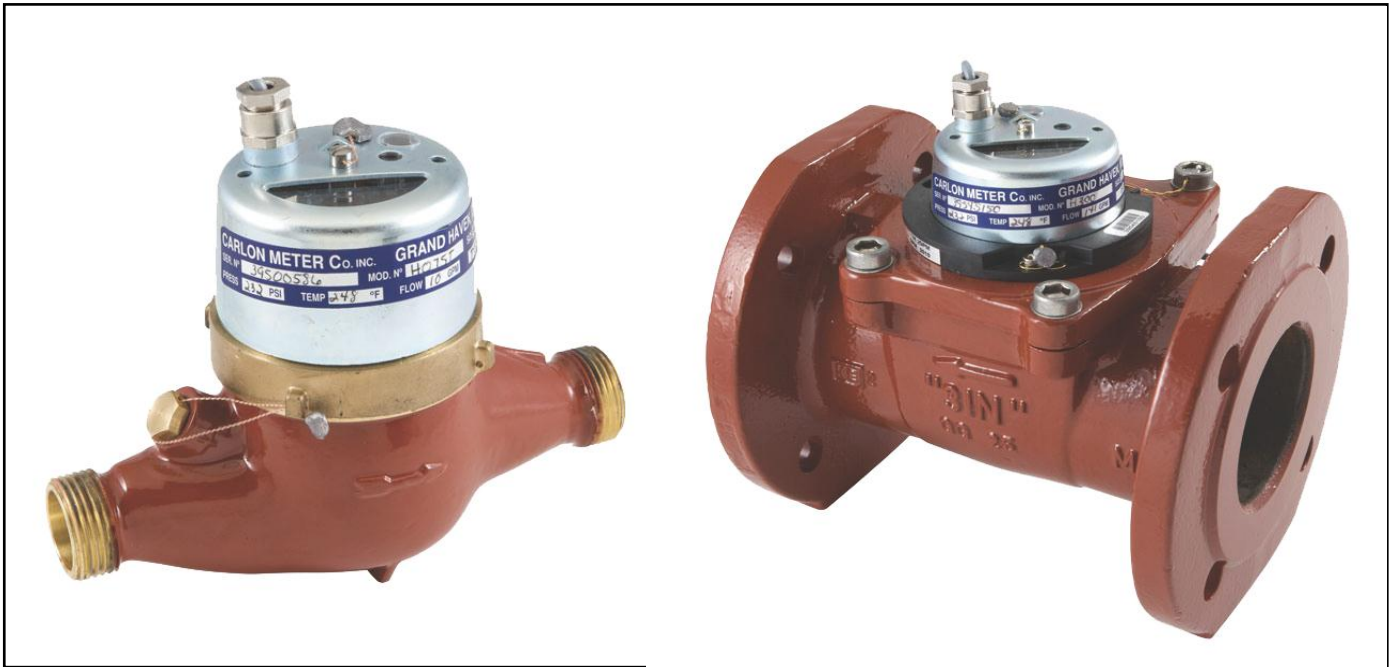


# HOT WATER MULTI-JETS & TURBINES



Have a hot water application that requires a high degree of accuracy with low maintenance features? Carlon Meter has a family of meters for you. Our hot water turbine meters are available in sizes  $\frac{3}{4}$ " to 6"; with larger sizes available upon request. Carlon turbine meters provide +/- 2% accuracy at flow rates from 1 GPM up to 2,860 GPM and 227 psi. Our hot water turbine meters will handle temperatures up to 250°F. The 2" and larger models have a register that is capable of rotating 340 degrees for the ease of reading the meter after installation. Our turbine meters are available in totalizing and electric contact configurations so that you can run your other process equipment (Carlon valves, timers, controllers and chemical pumps) directly from our turbine meter.



1710 EATON DRIVE • GRAND HAVEN, MICHIGAN 49417  
PHONE (616) 842-0420 • FAX (616) 842-1265  
E-MAIL [CARLON@CARLONMETER.COM](mailto:CARLON@CARLONMETER.COM) • WEBSITE [WWW.CARLONMETER.COM](http://WWW.CARLONMETER.COM)

| [sales@mvandc.com](mailto:sales@mvandc.com) | Phone: 877.566.3837 | Fax: 925.407.2903

## METER SELECTION CHART

METER SIZE	TOTALIZING MODEL	ELECTRIC CONTACT	CONTACT SETTINGS	*CONTINUOUS FLOW	FLOW RANGE
¾"	H075T	H075EC	1 / 10 / 100 GPC	11 GPM	1 - 20 GPM
1"	H100T	H100EC	1 / 10 / 100 GPC	26 GPM	2 - 50 GPM
1½"	H150T	H150EC	10 / 100 GPC	44 GPM	3 - 85 GPM
2"	H200T	H200EC	10 / 100 GPC	66 GPM	3 - 132 GPM
3"	H300T	H300EC	100 / 1000 GPC	141 GPM	14 - 198 GPM
4"	H400T	H400EC	100 / 1000 GPC	264 GPM	9 - 792 GPM
6"	H600T	H600EC	100 / 1000 GPC	880 GPM	35 - 1320 GPM
8"	H800T	H800EC	100 / 1000 GPC	1100 GPM	44 - 2201 GPM

**\*Continuous Flow:** The size of meter selected should be based upon continuous flow, GPM, as opposed to pipe size. For example, if it is determined that continuous flow is 500 GPM, a 4" meter should be selected. Head loss = 1.5 psi at continuous flow.

**ORDERING INFORMATION:** Select the meter model number from the Meter Selection Chart above. For EC models, specify model number shown followed by choice of contact pulse setting desired. (*call factory for other register reading abbreviations*). Example: 2" Meter with Electric Contact and 100 gallons per contact = H200EC-100 GPC.

### METER DIMENSIONS

METER SIZE	MODEL	LENGTH	HEIGHT	WIDTH	WEIGHT
¾"	H075T / H075EC	7½"	6"	3¾"	4½ lbs.
1"	H100T / H100EC	10¼"	7¼"	4"	7 lbs.
1½"	H150T / H150EC	11⅞"	8⅞"	5 ½"	11½ lbs.
2"	H200T / H200EC	7⅞"	12½"	6 ½"	32 lbs.
3"	H300T / H300EC	8⅞"	13"	7 ⅞"	39 lbs.
4"	H400T / H400EC	9⅞"	13½"	8 ⅝"	46 lbs.
6"	H600T / H600EC	11⅞"	14¼"	11¼"	72 lbs.
8"	H800T / H800EC	13⅞"	14¾"	13⅞"	100 lbs.

### SPECIFICATIONS

- Pressure Rating:** 7 - 227 psi.
- Temperature Range:** 35° - 250°F. Protect the meter from freezing.
- PH Level Range:** 6.5 – 8.0
- Accuracy:** +/- 1.5% of maximum flow when operating between minimum and maximum flow range.
- Register Options:** U.S. Gallons, Cubic Feet, and Metric.
- Specifics for EC Models only:** Switching voltage is 24VAC, 100mA maximum
- Electrical Data:** Registers conform to NEMA 4 and IP65
- Larger Sizes:** Available upon request.

#### Installation Instructions:

##### A. For all types of hot water turbine meters:

1. Flush the line thoroughly after all plumbing changes to prevent contaminants from entering the turbine.
2. 2" – 6" meters may be installed either horizontally or vertically with inlet port facing the water supply line.  
¾", 1" and 1½" meters are recommended to be mounted horizontal.

##### B. For EC type hot water turbine meters:

1. Connect the terminals on the pulse head to the meter input on the controlling device.
2. Connect your controlling device to the water treatment equipment (pumps, valves, etc.).  
Note GPC setting to determine frequency of operation.
3. This meter is not designed for outdoor installation.

#### Helpful Hints:

1. Install a Carlon Slow-Closing Valve downstream of your water meter. This will eliminate possible meter damage from water hammer in your system.
2. Install a Carlon Strainer upstream of your water meter to protect the meter and any other in-line process equipment from becoming jammed by particulate matter in your system.
3. Carlon turbine meters 2" and larger, have an epoxy coated cast iron main base. Sizes ¾", 1" and 1½" are Multi-Jet type meters with bronze main case.

**Warranty:** Carlon Meter, Inc. warrants its products to be free of defect in material or workmanship for a period of twelve months from the date of purchase. Contact us to obtain a copy of our complete statement of warranty.