



MARS Z-Plate Strainers

Fabricated Steel — 6", 8", 10", 12", 16", 18", 20", & 30"

Bronze — 1 1/2", 2", 3" 4" & 6"

Specification Sheet

Description

Operation: Z-Plate Strainers are designed to protect water meters from the effects of foreign matter and debris. The Z-Plate design is beneficial to the hydraulics of a water line by canceling the turbulence and providing smooth, laminar flow, thereby reducing the need for the installation of 8 to 10 diameters of straight pipe ahead of the in-line meter.

Installation: The Z-Plate Strainers should be installed upstream from the in-line meter.

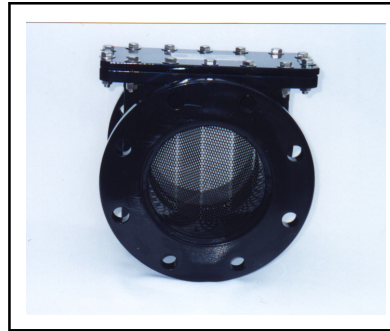
Application: The placement of the Z-Plate Strainer ahead of the in-line meter will maximize revenue and extend the life of the measuring element. To be used only in POTABLE COLD WATER up to 120° F (50° C) and Working Pressure up to 150 PSI. Working Pressure tests are performed prior to shipment. No further adjustments are required before installation.

Maintenance: The Z-Plate Strainers can be easily serviced without removal from the main line.

Compliance to Standards: The Z-Plate Strainers comply with all material and design requirements of the American Water Works Association Standards C701 and C702, as most recently revised.

MARS COMPANY
A Division of Floyd S. Salsler, Jr. & Assoc.
P.O. Box 772887
Ocala, FL 34477-2887
Toll Free: 800-782-5268
Tel.: (352) 694-7195
FAX: (352) 694-7397
www.marswater.com

Distributor:

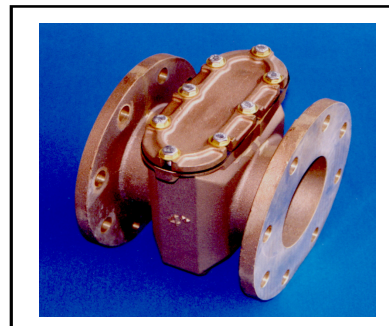


Specifications:

Operation Pressure: 150 PSI
Operation Temperature: 120° F
Maximum Pressure Loss: Less than 1 PSI at Max. flow.

Materials:

Main Case: Steel, Fusion Nylon Coated.
Screen Perforation: 304 Stainless Steel
5/32" holes (6" - 12")
1/4" holes (16" - 30")
Bolts: 316 Stainless Steel
O-Ring: Rubber, BUNA-N, 70 Durometer
Flanges: ANSI B 16.1 Class 125



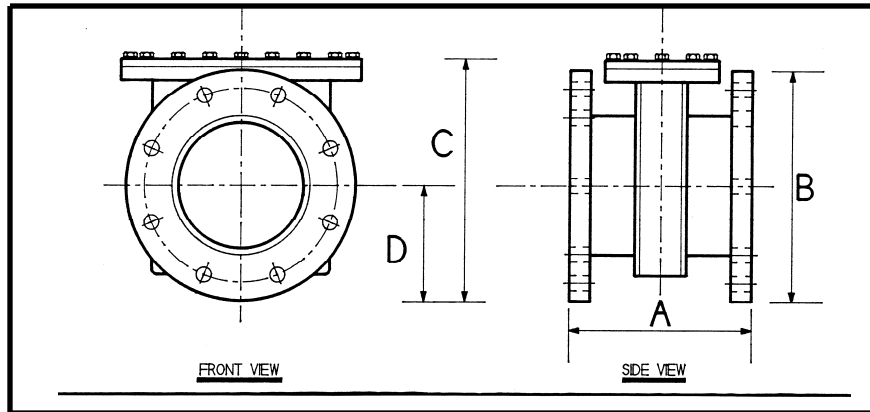
Specifications:

Pressure Range: up to 150 PSI maximum working pressure.
Temp. Range: 300° F Maximum.

Materials:

Body & Cover: Cast Bronze
Bolts: Stainless Steel
Screen: Removable heavy gauge 3/16" perforated stainless steel
Gasket: Velbuna

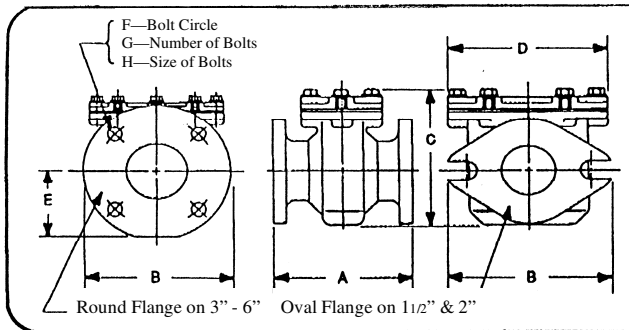
FABRICATED STEEL



Strainer Size (inches)	Maximum Flow (GPM)	Dimension (inches)				Flanges		Net Weight (lbs) Approx.
		A	B	C	D	# of Holes	Hole Dia. (inches)	
6	2,500	9	11	11 1/2	5 1/2	8	3/4	54
8	4,000	9	13 1/2	14	6 3/4	8	3/4	75
10	6,000	10	16	16 1/2	8	12	1	92
12	8,000	12	19	19 1/2	9 1/2	12	1	120
16	-	15	23 1/2	25 5/8	12 1/4	16	1 1/8	315
18	-	15	25	27 1/8	13	16	1 1/4	-
20	-	24 1/4	26 7/8	29 7/8	13 3/4	20	1 1/16	430
30	-	22	38 3/4	40 1/4	20 1/8	28	1 3/8	-

BRONZE

Size	Flow GPM	Head Loss in PSI
1 1/2	120	1.9
2	160	2.9
3	350	3.2
4	1000	2.6
6	2000	2.4



Size	Dimensions								Shipping Weight
	A	B	C	D	E	F	G	H	
1 1/2	5	5 3/4	5 1/4	5 3/4	2 3/16	4 1/2	2	5/8	15
2	5	5 3/4	5 1/4	5 3/4	2 3/16	4 1/2	2	5/8	15
3	6	7 1/2	7 3/4	6 3/4	3 1/2	6	4	5/8	30
4	7 1/2	9	9 3/4	8	4 1/4	7 1/2	8	3/4	40
6	9	11	11 1/4	11 1/8	5 1/4	9 1/2	8	3/4	67