

Changing Batteries in DATTUS (DM2) Meters

When a battery alarm occurs in the DATTUS (DM2) meter, use the following procedure to replace the meter batteries. The following procedure replaces the series batteries (600143-001) with the parallel batteries (600143-011).

To change batteries in the DM2 meter

1. Remove the protective cover.



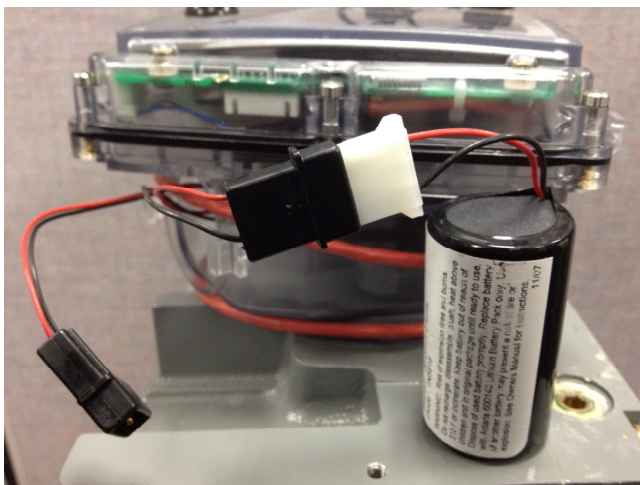
2. Remove the battery door.



3. Remove both series (600143-001) batteries from the DATTUS meter without disconnecting them.



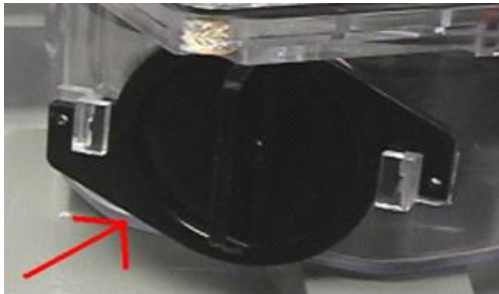
4. Replace each battery one at a time. Disconnect the first battery and immediately replace it with one of the parallel battery connectors. This ensures that the meter remains powered during the battery replacement.



5. Connect the second parallel battery



6. Place both batteries into the electronics enclosure, and seal them with the battery door.



7. Place the grey protective cover on the meter



8.

Itron is a registered trademark of Itron, Inc. © Itron, Inc. All rights reserved 15 March 2012
Contact • Itron, Inc., Gas - U.S., 970 Hwy. 127 North, Owenton, Kentucky 40359-9302, USA
Phone: (502) 484-5747 Toll free: 800-490-0657 Fax: (502) 484-6223