



RMT METER FLOW CAPACITY AT VARIOUS METERING PRESSURES (SCFH)


Gauge Pressure P.S.I.G 0.25.	RMT 600 Qmax= 600ft ³ /hr	RMT1000 Qmax= 1000ft ³ /hr	RMT1500 Qmax= 1500ft ³ /hr	RMT2000 Qmax= 2000ft ³ /hr	RMT3000 Qmax= 3000ft ³ /hr	RMT5000 Qmax= 5000ft ³ /hr	RMT7000 Qmax= 7000ft ³ /hr	RMT11000 Qmax= 11000ft ³ /hr	RMT16000 Qmax= 16000ft ³ /hr	RMT23000 Qmax= 23000ft ³ /hr	RM25000 Qmax= 25000ft ³ /hr	RM38000 Qmax= 38000ft ³ /hr	RM56000 Qmax= 56000ft ³ /h
1	627	1045	1568	2091	3136	5227	7318	11500	16728	24046	26137	39728	58547
5	790	1317	1976	2634	3951	6585	9219	14487	21073	30292	32926	50047	73754
10	994	1656	2485	3313	4969	8282	11595	18221	26504	38099	41412	62946	92763
15	1197	1996	2994	3992	5988	9980	13971	21955	31935	45906	49898	75845	111772
20	1401	2335	3503	4671	7006	11677	16348	25689	37366	53714	58384	88744	130781
25	1605	2675	4012	5350	8024	13374	18724	29423	42797	61521	66870	101643	149790
50	2623	4372	6558	8744	13116	21860	30604	48092	69952	100557	109300	166137	244834
75	3641	6069	9104	12138	18208	30346	42485	66762	97108	139593	151731	230631	339878
100	4660	7766	11650	15533	23299	38832	54365	85431	124263	178629	194161	295125	434922
125	5678	9464	14196	18927	28391	47318	66246	104100	151419	217665	236592	359620	529966
150	6697	11161	16741	22322	33483	55804	78126	122770	178574	256701	279022	424114	625010
175	7715	12858	19287	25716	38574	64291	90007	141439	205730	295737	321453	488608	720054

BASE (standard) PRESSURE @ 14.73 psia and ATMOSPHERIC PRESSURE @ 14.4 psia, 60°F GAS TEMPERATURE


Model	MAOP	Weight (lbs)	Connection	Flange/Flange	Rangeability @ ± 1% Error	Rangeability @ ± 2% Error	Start Rate (cfh)	Stop Rate (cfh)
RMT600	175 PSI	17-27	1.5" NPT & 2" Flg	10.5" NPT 6.75" FF	1:25	1:45	0.48	0.38
RMT1000	175 PSI	17-27	1.5" NPT & 2" Flg	10.5" NPT 6.75" FF	1:35	1:65	0.48	0.38
RMT1500	175 PSI	18-28	1.5" NPT & 2" Flg	10.5" NPT 6.75" FF	1:80	1:100	0.52	0.41
RMT2000	175 PSI	20-30	2" Flg	6.75"	1:100	1:145	0.42	0.34
RMT3000	175 PSI	24-34	2" Flg	6.75"	1:85	1:160	0.44	0.35
RMT5000	175 PSI	33-43	2" & 3" Flg	6.75"	1:150	1:220	0.42	0.34
RMT7000	175 PSI	42-48	3" Flg	9.5"	1:85	1:180	1.30	0.80
RMT11000	175 PSI	54-60	4" Flg	9.5"	1:140	1:200	1.37	0.82
RMT16000	175 PSI	70.5-76.5	4" Flg	9.5"	1:150	1:200	2.15	1.30
RMT23000	175 PSI	87-93	4" Flg	9.5"	1:160	1:200	2.62	1.60
RM25000	175 PSI	126	6" Flg	16"	1:90	1:180	14.5	8
RM38000	175 PSI	155	6" Flg	16"	1:120	1:250	22	14
RM56000	175 PSI	189	6" & 8" Flg	16"	1:100	1:200	26	16


AdEM Set-up

- 1) Connect communication cable from laptop to AdEM connector
- 2) Rometlink Login: "ROMET"
- 3) Set-up unit in Phone Book
- 4) In "Talk to Unit" click "Set-up"
- 5) AdEM should show link to download parameters
- 6) Make any changes in the four tabs "Basics", "T and P", "Statistics", and "Display"
- 7) Once parameter changes are made, click "Send"
- 8) AdEM access code: "33333"


 **ROMET** ▪ AdEM-S Electronic Index


1. AdEM-S (Integral mount electronic index)
2. Electronic replacement for mechanical index
3. Programmable Pressure Factor for Fixed-Factor Measurement
4. 20-Year Battery Life
5. Low Flow volumetric program
 - Rangeability 200:1
6. Built-in Audit Trail
 - 100 Days hourly reads
 - Daily Logger – 672 days
 - Alarm Logger
 - Event Logger




 **ROMET** ▪ AdEM-T Electronic Index

1. AdEM-T (Integral mount electronic index)
2. Electronic Temperature Correction
3. Programmable Pressure Factor for Fixed-Factor Measurement
4. 20-Year Battery Life
5. Low Flow Compensation
 - Rangeability 200:1
6. Built-in Audit Trail
 - 100 Days hourly reads
 - Daily Logger – 672 days
 - Alarm Logger
 - Event Logger



 **ROMET** ▪ AdEM-PTZ Electronic Corrector

1. AdEM-PTZ (Integral mount electronic index)
2. Electronic Pressure & Temperature, Supercompressibility Correction
3. Standard Pressure Range 0-175 PSI (other ranges available)
4. 20-Year Battery Life
5. Low Flow Compensation
 - Rangeability 200:1
6. Built-in Audit Trail
 - 256 Days hourly reads
 - Daily Logger – 1024 days
 - Alarm Logger
 - Event Logger



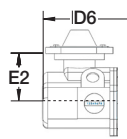
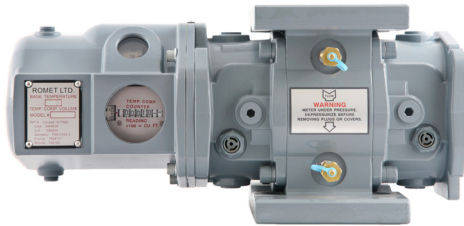
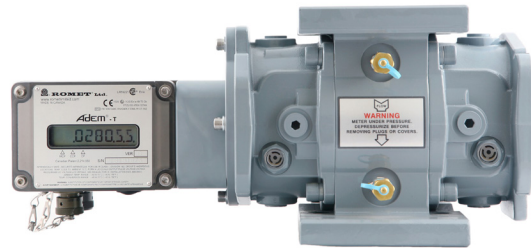
***The information contained herein is confidential and is the exclusive property of Romet Ltd.
By its retention and use, the recipient agrees to hold in strict confidence all the information contained herein.
© 2019 Romet Ltd.***



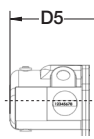
ROMET

Rotary Gas Meters

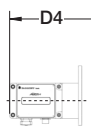
RMT600 - IMPERIAL



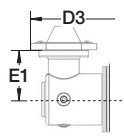
TCID



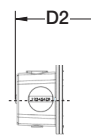
TC



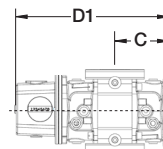
AdEM



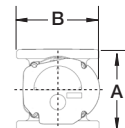
STDID / DCID



STD CTR
END INDEX



STD CTR
SIDE INDEX



Note: AMI/AMR adaptors available upon request.

METER SIZE	ANSI 125 FF FLANGE	A	B	C	D1	D2	D3	D4	D5	D6	E1	E2	WEIGHT (lbs)
RMT600	2"	6.75"	6.88"	4.27"	12.01"	13.49"	14.95"	15.15"	14.55"	14.55"	4.00"	4.00"	17-27

IMPERIAL RMT600 2" FLANGE CONNECTION

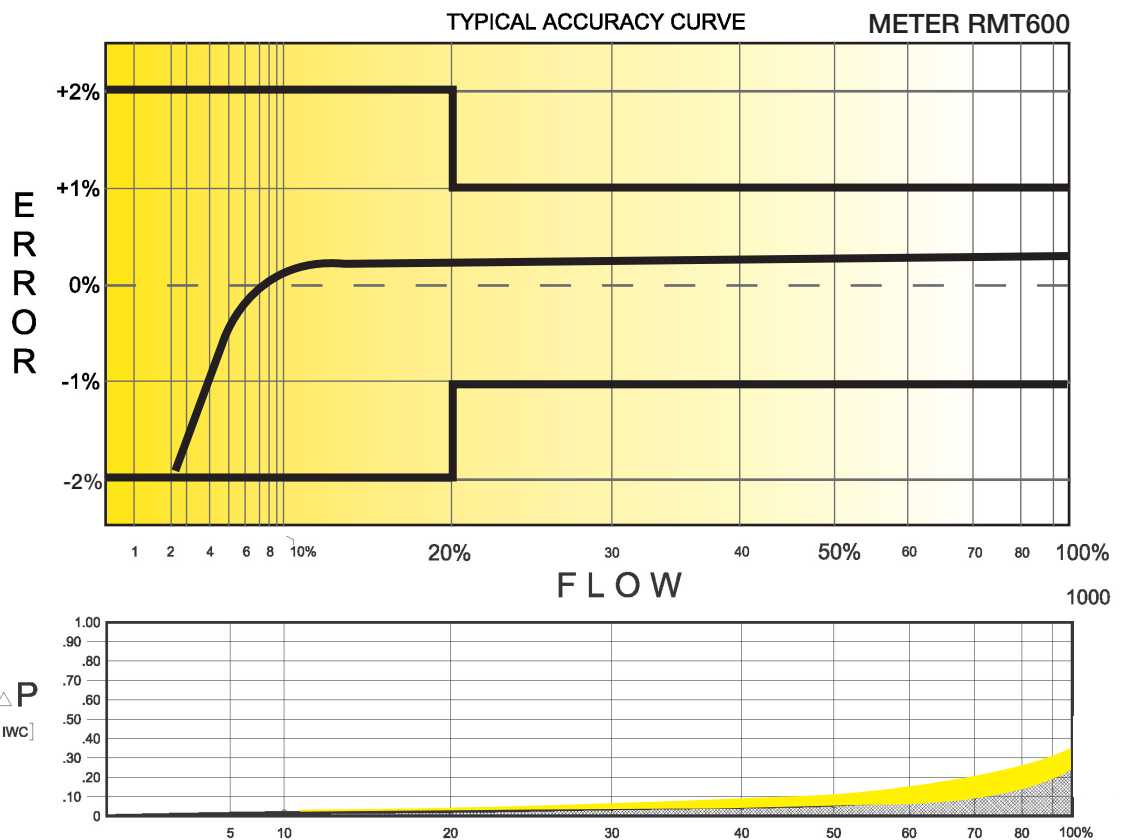
TECHNICAL SPECIFICATION

Connection (Flanged)	ANSI 125 FF	2"
MAOP	(psig)	175
Flow Capacity	(cfh)	600
Rangeability* @ $\pm 2\%$ / $\pm 1\%$ Error		1:45 / 1:25
Average Start Rate	(cfh)	0.48
Average Stop Rate	(cfh)	0.38
Differential @ 100 % Flow [AIR/N.G.]	(I.W.C.)	0.36 / 0.22
Instrument Drive Rate	(cf/rev)	10
LF Pulser (Optional)	(cf/rev)	10

*Note: It should be noted, that moving parts in the meters with greater rangeability ratio are made to high class accuracy and tight tolerances. Improper installation, stresses on piping system due to temperature changes, settling and gas conditions can create a risk of meter rejection.

CORRECTED FLOW CAPACITY AND TYPICAL ACCURACY GUIDE

RMT600 METER (SCFH)	
Gauge Pressure P.S.I.G. 0.25	RMT600 Qmax = 600ft ³ /hr
2	627
5	790
10	994
15	1197
20	1401
25	1605
50	2623
75	3641
100	4660
125	5678
150	6697
175	7715



ROMET

Measuring energy globally

Canada 905-624-1591 USA 1-800-387-3201
www.rometlimited.com • romet@rometlimited.com

The values quoted are typical of normal production. They do not constitute a specification. Romet Limited reserves the right to change any information in this literature without notice. All of the information and data in this literature has

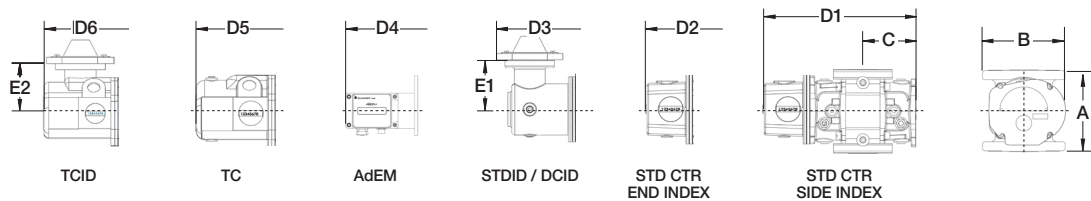
been carefully compiled and thoroughly checked. However, Romet Limited will not assume responsibility for any possible omissions or errors. Romet is a registered trademark.



ROMET

Rotary Gas Meters

RMT1000 - IMPERIAL



Note: AMI/AMR adaptors available upon request.

METER SIZE	ANSI 125 FF FLANGE	A	B	C	D1	D2	D3	D4	D5	D6	E1	E2	WEIGHT (lbs)
RMT1000	2"	6.75"	6.88"	4.27"	12.01"	13.49"	14.95"	15.15"	14.55"	14.55"	4.00"	4.00"	17-27

IMPERIAL RMT1000 2" FLANGE CONNECTION

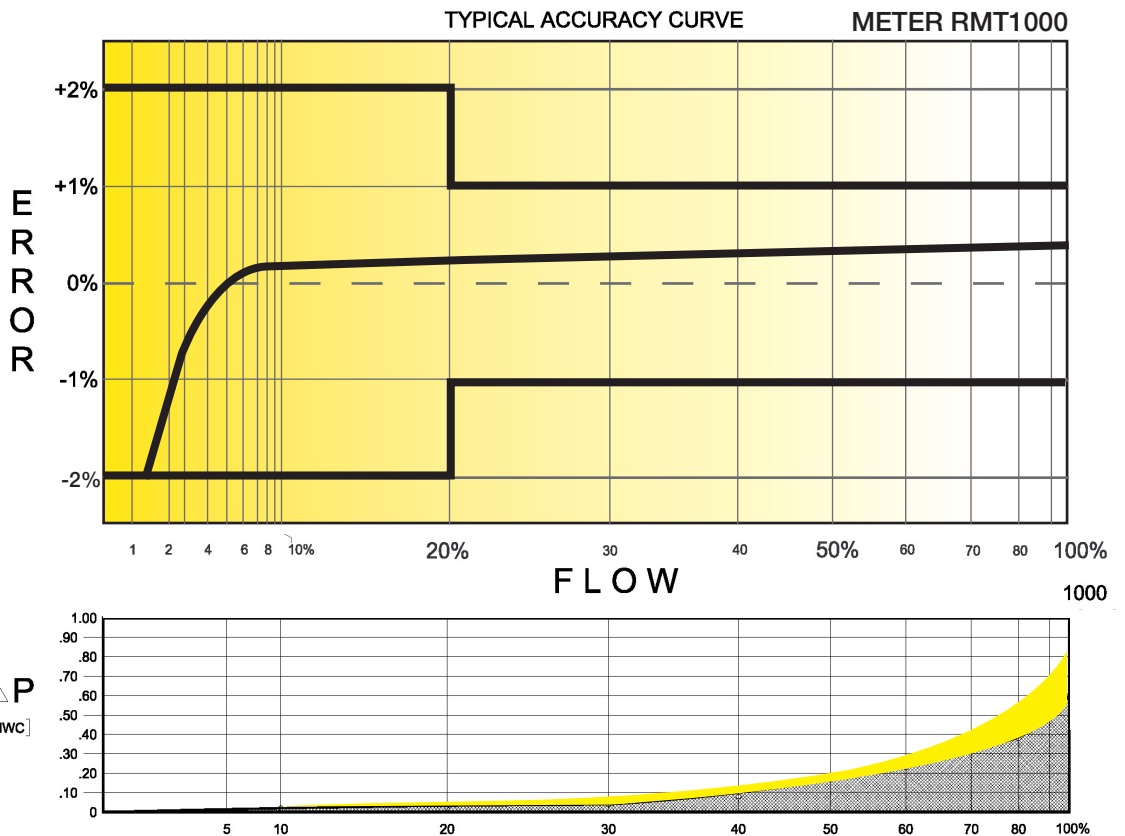
TECHNICAL SPECIFICATION

Connection (Flanged)	ANSI 125 FF	2"
MAOP	(psig)	175
Flow Capacity	(cfh)	1000
Rangeability* @ $\pm 2\%$ / $\pm 1\%$ Error		1:65 / 1:35
Average Start Rate	(cfh)	0.48
Average Stop Rate	(cfh)	0.38
Differential @ 100 % Flow [AIR/N.G.]	(I.W.C.)	0.81 / 0.49
Instrument Drive Rate	(cf/rev)	10
LF Pulser (Optional)	(cf/rev)	10

*Note: It should be noted, that moving parts in the meters with greater rangeability ratio are made to high class accuracy and tight tolerances. Improper installation, stresses on piping system due to temperature changes, settling and gas conditions can create a risk of meter rejection.

CORRECTED FLOW CAPACITY AND TYPICAL ACCURACY GUIDE

RMT1000 METER (SCFH)	
Gauge Pressure P.S.I.G. 0.25	RMT1000 Qmax = 1000ft ³ /hr
2	1045
5	1317
10	1656
15	1996
20	2335
25	2675
50	4372
75	6069
100	7766
125	9464
150	11161
175	12858



ROMET

Measuring energy globally

Canada 905-624-1591 USA 1-800-387-3201
www.rometlimited.com • romet@rometlimited.com

The values quoted are typical of normal production. They do not constitute a specification. Romet Limited reserves the right to change any information in this literature without notice. All of the information and data in this literature has

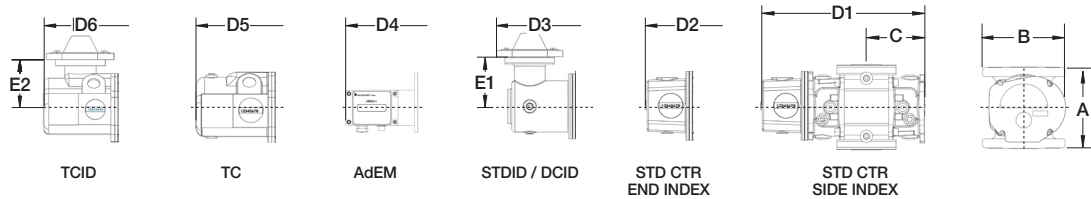
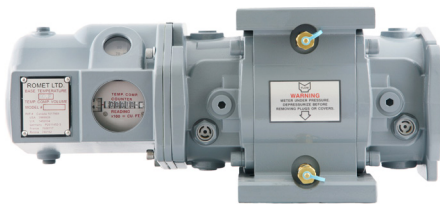
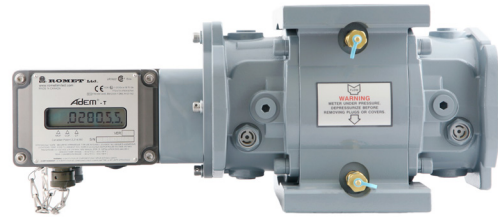
been carefully compiled and thoroughly checked. However, Romet Limited will not assume responsibility for any possible omissions or errors. Romet is a registered trademark.



ROMET

Rotary Gas Meters

RMT1500 - IMPERIAL



Note: AMI/AMR adaptors available upon request.

METER SIZE	ANSI 125 FF FLANGE	A	B	C	D1	D2	D3	D4	D5	D6	E1	E2	WEIGHT (lbs)
RMT1500	2"	6.75"	6.88"	4.62"	12.80"	14.28"	15.74"	15.94"	15.34"	15.34"	4.00"	4.00"	18-28

IMPERIAL RMT1500 2" FLANGE CONNECTION

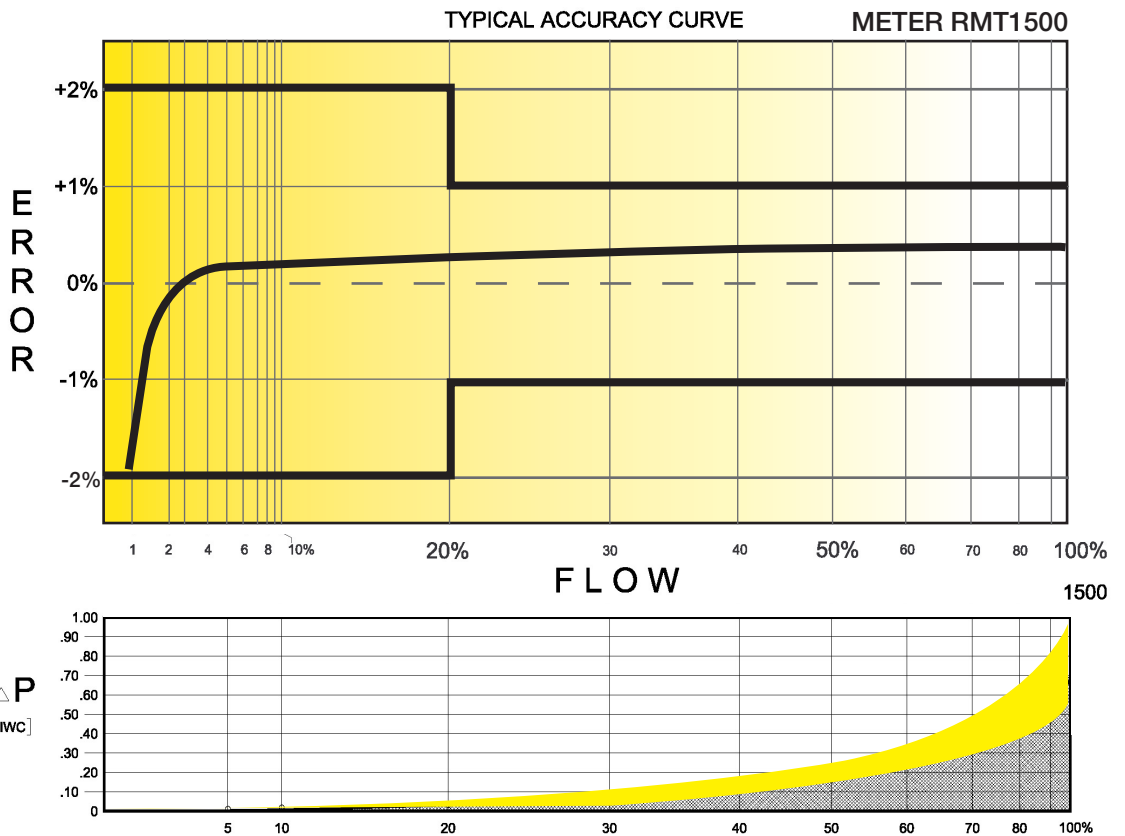
TECHNICAL SPECIFICATION

Connection (Flanged)	ANSI 125 FF	2"
MAOP	(psig)	175
Flow Capacity	(cfh)	1500
Rangeability* @ $\pm 2\%$ / $\pm 1\%$ Error		1:100 / 1:80
Average Start Rate	(cfh)	0.52
Average Stop Rate	(cfh)	0.41
Differential @ 100 % Flow [AIR/N.G.]	(I.W.C.)	0.98 / 0.59
Instrument Drive Rate	(cf/rev)	10
LF Pulser (Optional)	(cf/rev)	10

*Note: It should be noted, that moving parts in the meters with greater rangeability ratio are made to high class accuracy and tight tolerances. Improper installation, stresses on piping system due to temperature changes, settling and gas conditions can create a risk of meter rejection.

CORRECTED FLOW CAPACITY AND TYPICAL ACCURACY GUIDE

RMT1500 METER (SCFH)	
Gauge Pressure P.S.I.G. 0.25	RMT1500 Qmax = 1500ft ³ /hr
2	1568
5	1976
10	2485
15	2994
20	3503
25	4012
50	6558
75	9104
100	11650
125	14196
150	16741
175	19287



ROMET

Measuring energy globally

Canada 905-624-1591 USA 1-800-387-3201
www.rometlimited.com • romet@rometlimited.com

The values quoted are typical of normal production. They do not constitute a specification. Romet Limited reserves the right to change any information in this literature without notice. All of the information and data in this literature has

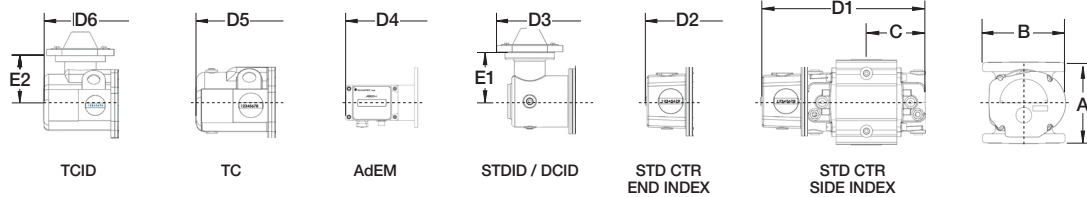
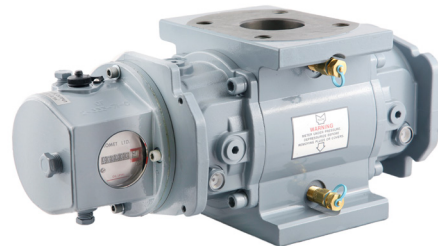
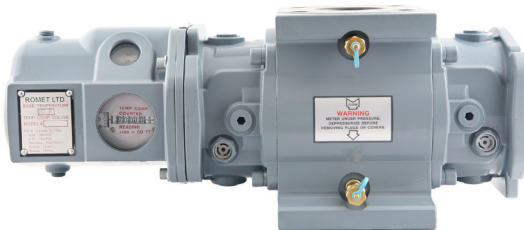
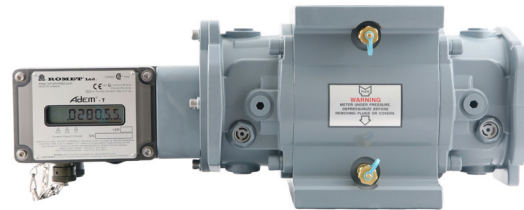
been carefully compiled and thoroughly checked. However, Romet Limited will not assume responsibility for any possible omissions or errors. Romet is a registered trademark.



ROMET

Rotary Gas Meters

RMT2000 - IMPERIAL



Note: AMI/AMR adaptors available upon request.

METER SIZE	ANSI 125 FF FLANGE	A	B	C	D1	D2	D3	D4	D5	D6	E1	E2	WEIGHT (lbs)
RMT2000	2"	6.75"	6.88"	5.33"	14.12"	15.60"	17.06"	17.26"	16.66"	16.66"	4.00"	4.00"	20-30

IMPERIAL RMT2000 2" FLANGE CONNECTION

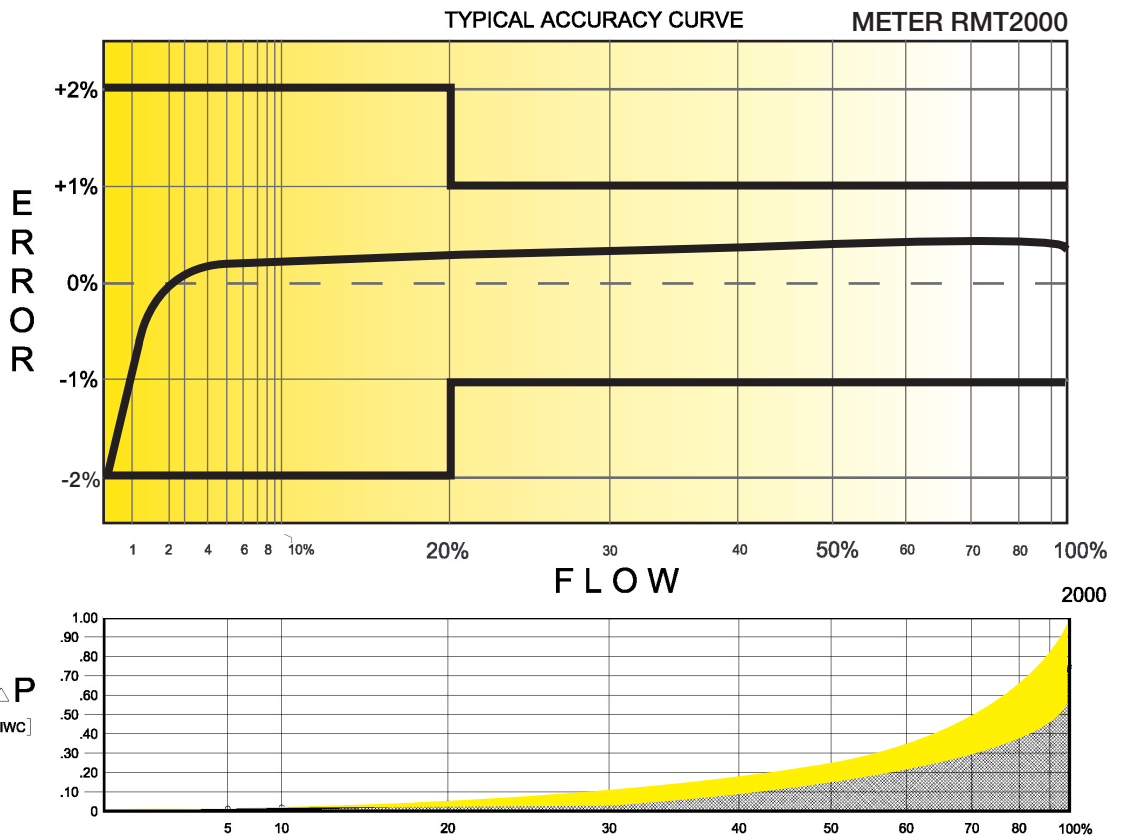
TECHNICAL SPECIFICATION

Connection (Flanged)	ANSI 125 FF	2"
MAOP	(psig)	175
Flow Capacity	(cfh)	2000
Rangeability* @ $\pm 2\%$ / $\pm 1\%$ Error		1:145 / 1:100
Average Start Rate	(cfh)	0.42
Average Stop Rate	(cfh)	0.34
Differential @ 100 % Flow [AIR/N.G.]	(I.W.C.)	0.79 / 0.47
Instrument Drive Rate	(cf/rev)	10 or 100
LF Pulser (Optional)	(cf/rev)	10 or 100

*Note: It should be noted, that moving parts in the meters with greater rangeability ratio are made to high class accuracy and tight tolerances. Improper installation, stresses on piping system due to temperature changes, settling and gas conditions can create a risk of meter rejection.

CORRECTED FLOW CAPACITY AND TYPICAL ACCURACY GUIDE

RMT2000 METER (SCFH)	
Gauge Pressure P.S.I.G. 0.25	RMT2000 Qmax = 2000ft ³ /hr
2	2091
5	2634
10	3313
15	3992
20	4671
25	5350
50	8744
75	12138
100	15533
125	18927
150	22322
175	25716



ROMET

Measuring energy globally

Canada 905-624-1591 USA 1-800-387-3201
www.rometlimited.com • romet@rometlimited.com

The values quoted are typical of normal production. They do not constitute a specification. Romet Limited reserves the right to change any information in this literature without notice. All of the information and data in this literature has

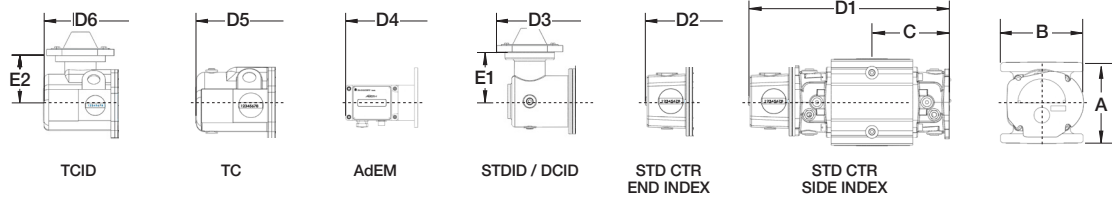
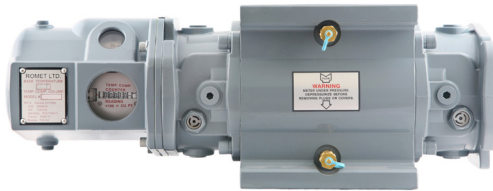
been carefully compiled and thoroughly checked. However, Romet Limited will not assume responsibility for any possible omissions or errors. Romet is a registered trademark.



ROMET

Rotary Gas Meters

RMT3000 - IMPERIAL



Note: AMI/AMR adaptors available upon request.

METER SIZE	ANSI 125 FF FLANGE	A	B	C	D1	D2	D3	D4	D5	D6	E1	E2	WEIGHT (lbs)
RMT3000	2"	6.75"	6.88"	6.10"	15.66"	17.14"	18.60"	18.80"	18.20"	18.20"	4.00"	4.00"	24-34

IMPERIAL RMT3000 2" FLANGE CONNECTION

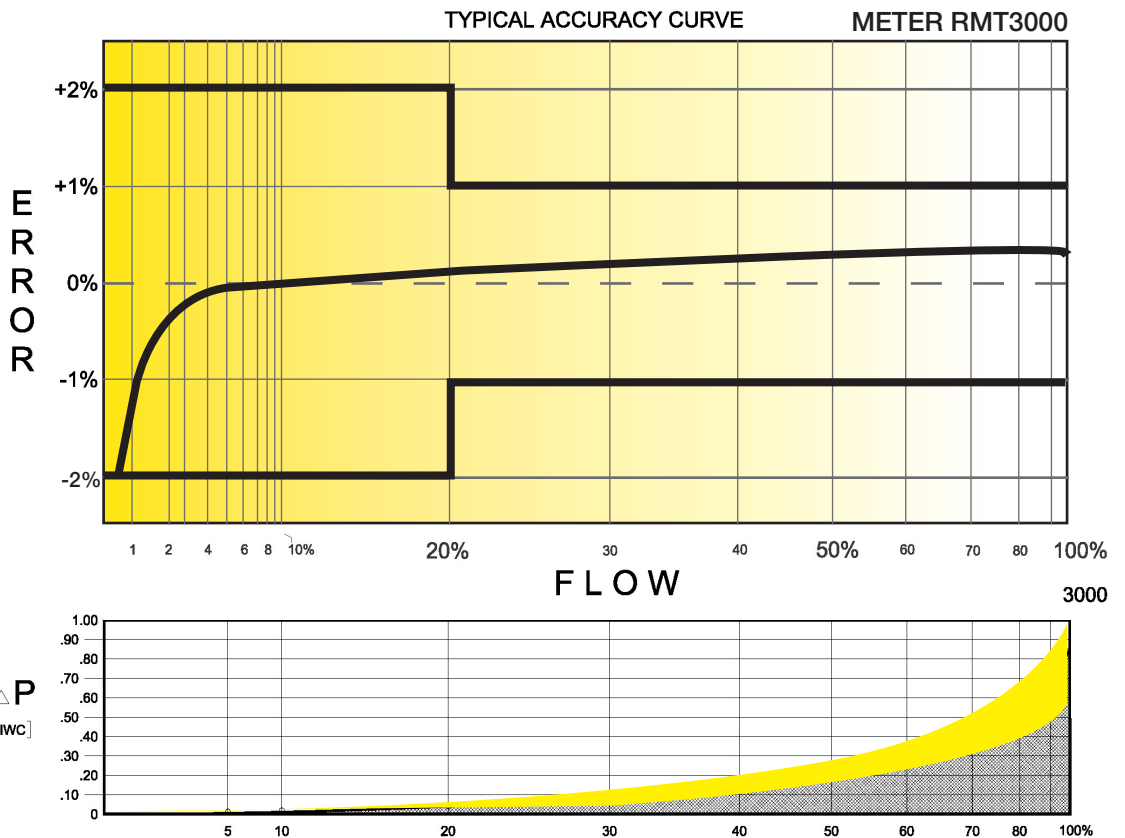
TECHNICAL SPECIFICATION

Connection (Flanged)	ANSI 125 FF	2"
MAOP	(psig)	175
Flow Capacity	(cfh)	3000
Rangeability* @ $\pm 2\%$ / $\pm 1\%$ Error		1:160 / 1:85
Average Start Rate	(cfh)	0.44
Average Stop Rate	(cfh)	0.35
Differential @ 100 % Flow [AIR/N.G.]	(I.W.C.)	1.00 / 0.60
Instrument Drive Rate	(cf/rev)	10 or 100
LF Pulser (Optional)	(cf/rev)	10 or 100

*Note: It should be noted, that moving parts in the meters with greater rangeability ratio are made to high class accuracy and tight tolerances. Improper installation, stresses on piping system due to temperature changes, settling and gas conditions can create a risk of meter rejection.

CORRECTED FLOW CAPACITY AND TYPICAL ACCURACY GUIDE

RMT3000 METER (SCFH)	
Gauge Pressure P.S.I.G. 0.25	RMT3000 Qmax = 3000ft ³ /hr
2	3136
5	3951
10	4969
15	5988
20	7006
25	8024
50	13116
75	18208
100	23299
125	28391
150	33483
175	38574



ROMET

Measuring energy globally

Canada 905-624-1591 USA 1-800-387-3201
www.rometlimited.com • romet@rometlimited.com

The values quoted are typical of normal production. They do not constitute a specification. Romet Limited reserves the right to change any information in this literature without notice. All of the information and data in this literature has

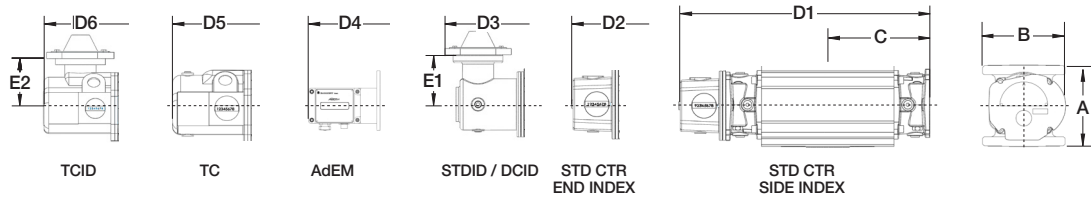
been carefully compiled and thoroughly checked. However, Romet Limited will not assume responsibility for any possible omissions or errors. Romet is a registered trademark.



ROMET

Rotary Gas Meters

RMT5000 - IMPERIAL



Note: AMI/AMR adaptors available upon request.

METER SIZE	ANSI 125 FF FLANGE	A	B	C	D1	D2	D3	D4	D5	D6	E1	E2	WEIGHT (lbs)
RMT5000	3"	6.75"	6.88"	8.22"	19.90"	21.38"	22.84"	23.04"	22.44"	22.44"	4.00"	4.00"	33-43

IMPERIAL RMT5000 3" FLANGE CONNECTION

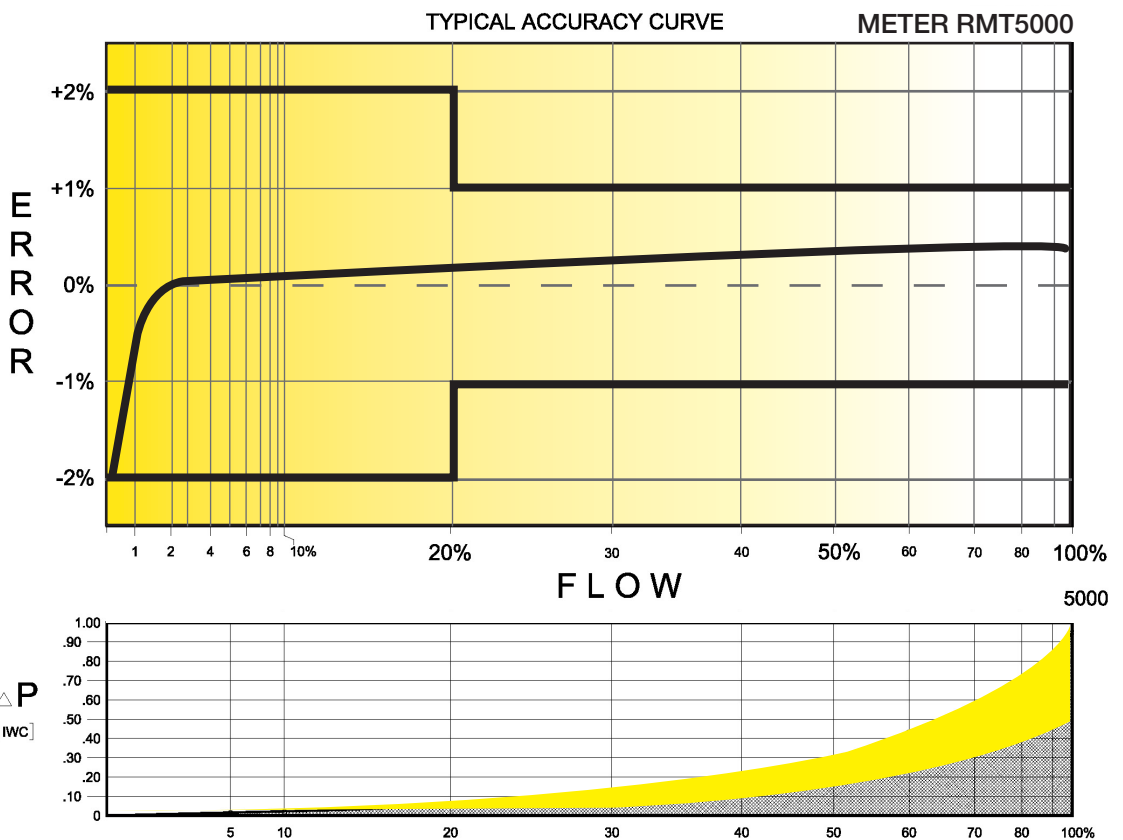
TECHNICAL SPECIFICATION

Connection (Flanged)	ANSI 125 FF	3"
MAOP	(psig)	175
Flow Capacity	(cfh)	5000
Rangeability* @ $\pm 2\%$ / $\pm 1\%$ Error		1:220 / 1:150
Average Start Rate	(cfh)	0.42
Average Stop Rate	(cfh)	0.34
Differential @ 100 % Flow [AIR/N.G.]	(I.W.C.)	0.95 / 0.57
Instrument Drive Rate	(cf/rev)	10 or 100
LF Pulser (Optional)	(cf/rev)	10 or 100

*Note: It should be noted, that moving parts in the meters with greater rangeability ratio are made to high class accuracy and tight tolerances. Improper installation, stresses on piping system due to temperature changes, settling and gas conditions can create a risk of meter rejection.

CORRECTED FLOW CAPACITY AND TYPICAL ACCURACY GUIDE

RMT5000 METER (SCFH)	
Gauge Pressure P.S.I.G. 0.25	RMT5000 Qmax = 5000ft ³ /hr
2	5227
5	6585
10	8282
15	9980
20	11677
25	13374
50	21860
75	30346
100	38832
125	47318
150	55804
175	64291



ROMET

Measuring energy globally

Canada 905-624-1591 USA 1-800-387-3201
www.rometlimited.com • romet@rometlimited.com

The values quoted are typical of normal production. They do not constitute a specification. Romet Limited reserves the right to change any information in this literature without notice. All of the information and data in this literature has

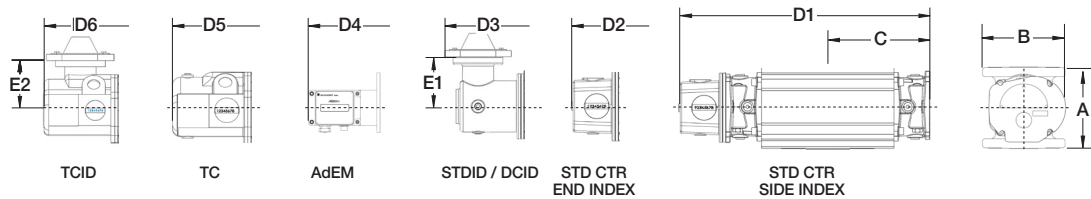
been carefully compiled and thoroughly checked. However, Romet Limited will not assume responsibility for any possible omissions or errors. Romet is a registered trademark.



ROMET

Rotary Gas Meters

RMT7000 - IMPERIAL



Note: AMI/AMR adaptors available upon request.

METER SIZE	ANSI 125 FF FLANGE	A	B	C	D1	D2	D3	D4	D5	D6	E1	E2	WEIGHT (lbs)
RMT7000	3"	9.5"	8.25"	6.70"	16.71"	18.19"	19.65"	19.85"	19.25"	19.25"	4.00"	4.00"	42-48

Meets or exceeds ANSI B109.3

IMPERIAL RMT7000 3" FLANGE CONNECTION

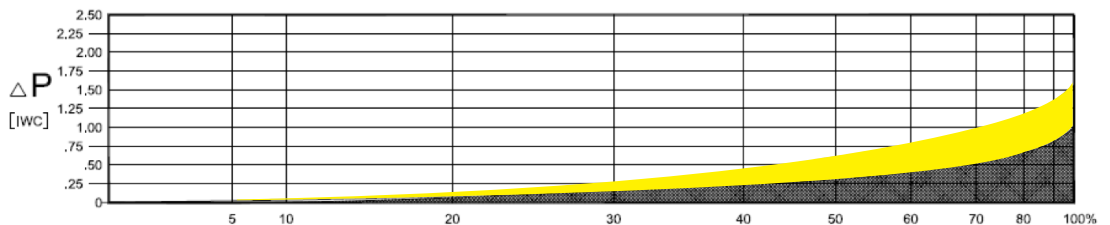
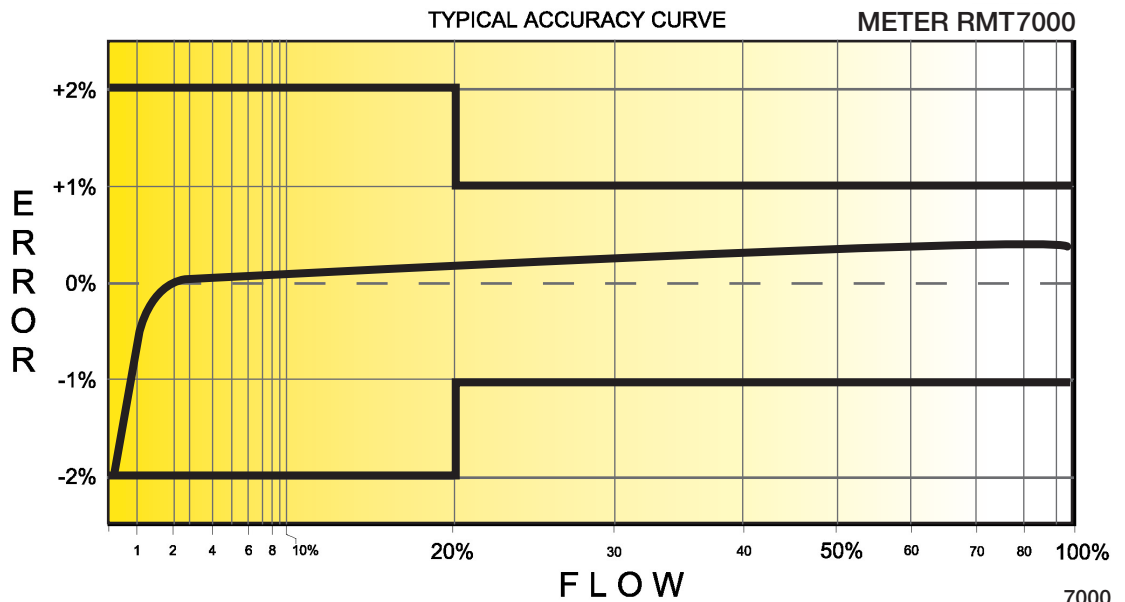
TECHNICAL SPECIFICATION

Connection (Flanged)	ANSI 125 FF	3"
MAOP	(psig)	175
Flow Capacity	(cfh)	7000
Rangeability* @ $\pm 2\%$ / $\pm 1\%$ Error		1:180 / 1:85
Average Start Rate	(cfh)	1.30
Average Stop Rate	(cfh)	0.80
Differential @ 100 % Flow [AIR/N.G.]	(I.W.C.)	1.55 / 0.93
Instrument Drive Rate	(cf/rev)	10 or 100
LF Pulser (Optional)	(cf/rev)	10 or 100

*Note: It should be noted, that moving parts in the meters with greater rangeability ratio are made to high class accuracy and tight tolerances. Improper installation, stresses on piping system due to temperature changes, settling and gas conditions can create a risk of meter rejection.

CORRECTED FLOW CAPACITY AND TYPICAL ACCURACY GUIDE

RMT7000 METER (SCFH)	
Gauge Pressure P.S.I.G. 0.25	RMT7000 Qmax = 7000ft ³ /hr
2	7318
5	9219
10	11595
15	13971
20	16348
25	18724
50	30604
75	42485
100	54365
125	66246
150	78126
175	90007



ROMET

Measuring energy globally

Canada 905-624-1591 USA 1-800-387-3201
www.rometlimited.com • romet@rometlimited.com

The values quoted are typical of normal production. They do not constitute a specification. Romet Limited reserves the right to change any information in this literature without notice. All of the information and data in this literature has

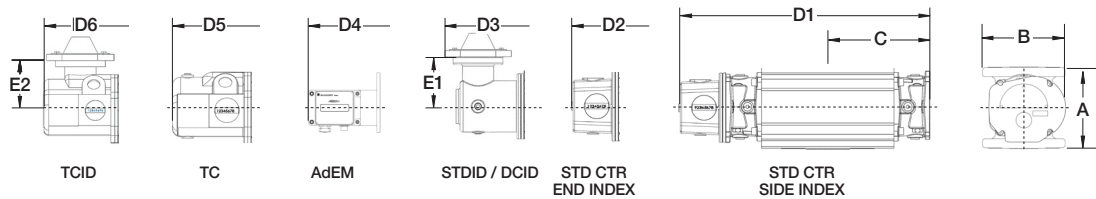
been carefully compiled and thoroughly checked. However, Romet Limited will not assume responsibility for any possible omissions or errors. Romet is a registered trademark.



ROMET

Rotary Gas Meters

RMT11000 - IMPERIAL



Note: AMI/AMR adaptors available upon request.

METER SIZE	ANSI 125 FF FLANGE	A	B	C	D1	D2	D3	D4	D5	D6	E1	E2	WEIGHT (lbs)
RMT11000	4"	9.5"	8.25"	8.24"	19.96"	21.44"	22.90"	23.10"	22.50"	22.50"	4.00"	4.00"	54-60

Meets or exceeds ANSI B109.3

IMPERIAL RMT11000 4" FLANGE CONNECTION

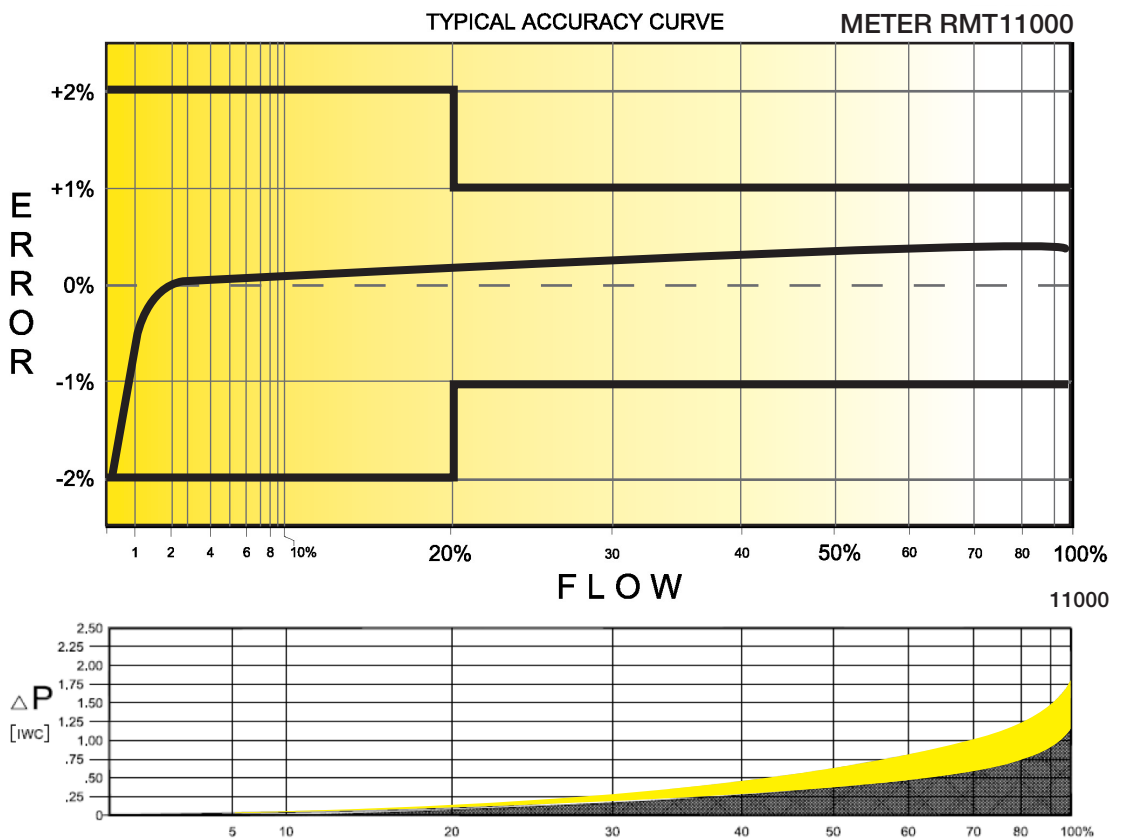
TECHNICAL SPECIFICATION

Connection (Flanged)	ANSI 125 FF	4"
MAOP	(psig)	175
Flow Capacity	(cfh)	11000
Rangeability* @ $\pm 2\%$ / $\pm 1\%$ Error		1:200 / 1:140
Average Start Rate	(cfh)	1.37
Average Stop Rate	(cfh)	0.82
Differential @ 100 % Flow [AIR/N.G.]	(I.W.C.)	1.75 / 1.05
Instrument Drive Rate	(cf/rev)	10 or 100
LF Pulser (Optional)	(cf/rev)	10 or 100

*Note: It should be noted, that moving parts in the meters with greater rangeability ratio are made to high class accuracy and tight tolerances. Improper installation, stresses on piping system due to temperature changes, settling and gas conditions can create a risk of meter rejection.

CORRECTED FLOW CAPACITY AND TYPICAL ACCURACY GUIDE

RMT11000 METER (SCFH)	
Gauge Pressure P.S.I.G. 0.25	RMT11000 Qmax = 11000ft ³ /hr
2	11500
5	14487
10	18221
15	21955
20	25689
25	29423
50	48092
75	66762
100	85431
125	104100
150	122770
175	141439



ROMET

Measuring energy globally

Canada 905-624-1591 USA 1-800-387-3201
www.rometlimited.com • romet@rometlimited.com

The values quoted are typical of normal production. They do not constitute a specification. Romet Limited reserves the right to change any information in this literature without notice. All of the information and data in this literature has

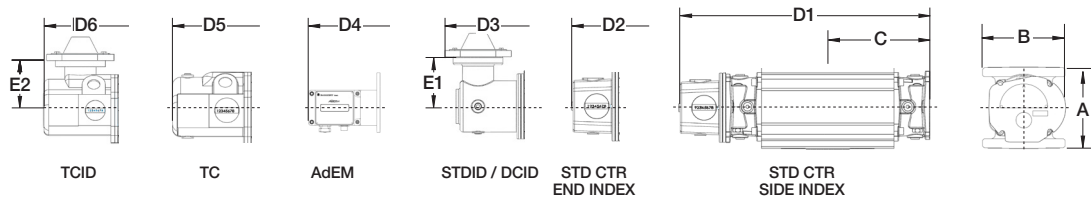
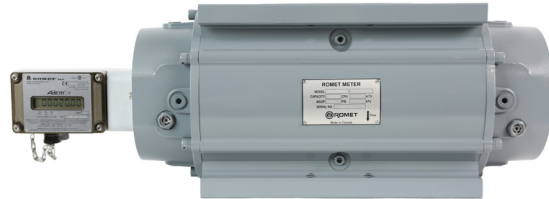
been carefully compiled and thoroughly checked. However, Romet Limited will not assume responsibility for any possible omissions or errors. Romet is a registered trademark.



ROMET

Rotary Gas Meters

RMT16000 - IMPERIAL



Note: AMI/AMR adaptors available upon request.

METER SIZE	ANSI 125 FF FLANGE	A	B	C	D1	D2	D3	D4	D5	D6	E1	E2	WEIGHT (lbs)
RMT16000	4"	9.5"	8.25"	10.27"	24.02"	25.50"	26.96"	27.16"	26.56"	26.56"	4.00"	4.00"	70.5-76.5

Meets or exceeds ANSI B109.3

IMPERIAL RMT16000 4" FLANGE CONNECTION

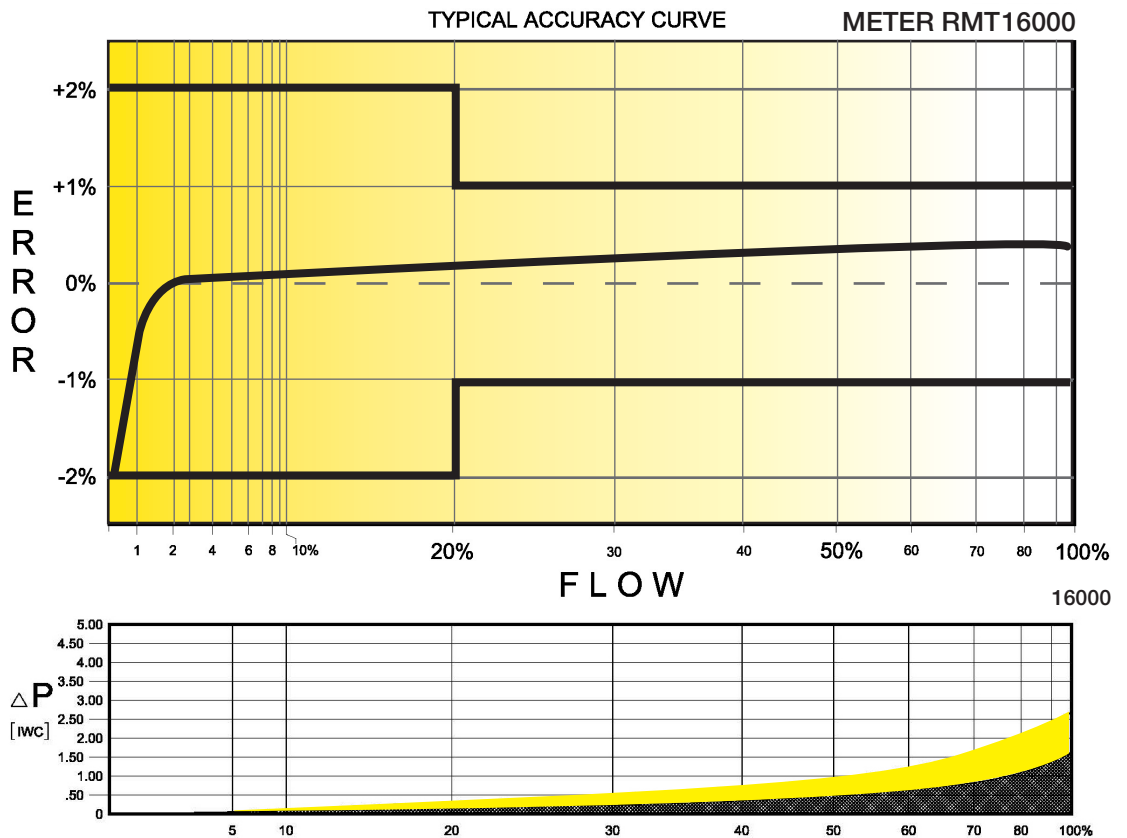
TECHNICAL SPECIFICATION

Connection (Flanged)	ANSI 125 FF	4"
MAOP	(psig)	175
Flow Capacity	(cfh)	16000
Rangeability* @ $\pm 2\%$ / $\pm 1\%$ Error		1:200 / 1:150
Average Start Rate	(cfh)	2.15
Average Stop Rate	(cfh)	1.30
Differential @ 100 % Flow [AIR/N.G.]	(I.W.C.)	2.67 / 1.60
Instrument Drive Rate	(cf/rev)	10 or 100
LF Pulser (Optional)	(cf/rev)	10 or 100

*Note: It should be noted, that moving parts in the meters with greater rangeability ratio are made to high class accuracy and tight tolerances. Improper installation, stresses on piping system due to temperature changes, settling and gas conditions can create a risk of meter rejection.

CORRECTED FLOW CAPACITY AND TYPICAL ACCURACY GUIDE

RMT16000 METER (SCFH)	
Gauge Pressure P.S.I.G. 0.25	RMT16000 Qmax = 16000ft ³ /hr
2	16728
5	21073
10	26504
15	31935
20	37366
25	42797
50	69952
75	97108
100	124263
125	151419
150	178574
175	205730



ROMET

Measuring energy globally

Canada 905-624-1591 USA 1-800-387-3201
www.rometlimited.com • romet@rometlimited.com

The values quoted are typical of normal production. They do not constitute a specification. Romet Limited reserves the right to change any information in this literature without notice. All of the information and data in this literature has

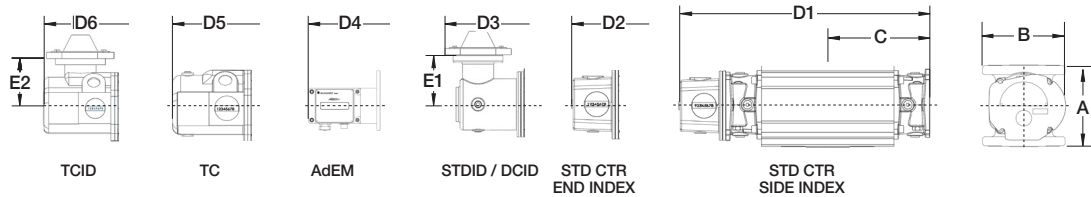
been carefully compiled and thoroughly checked. However, Romet Limited will not assume responsibility for any possible omissions or errors. Romet is a registered trademark.



ROMET

Rotary Gas Meters

RMT23000 - IMPERIAL



Note: AMI/AMR adaptors available upon request.

METER SIZE	ANSI 125 FF FLANGE	A	B	C	D1	D2	D3	D4	D5	D6	E1	E2	WEIGHT (lbs)
RMT23000	4"	9.5"	8.25"	12.11"	27.70"	29.18"	30.64"	30.84"	30.24"	30.24"	4.00"	4.00"	87-93

Meets or exceeds ANSI B109.3

IMPERIAL RMT23000 4" FLANGE CONNECTION

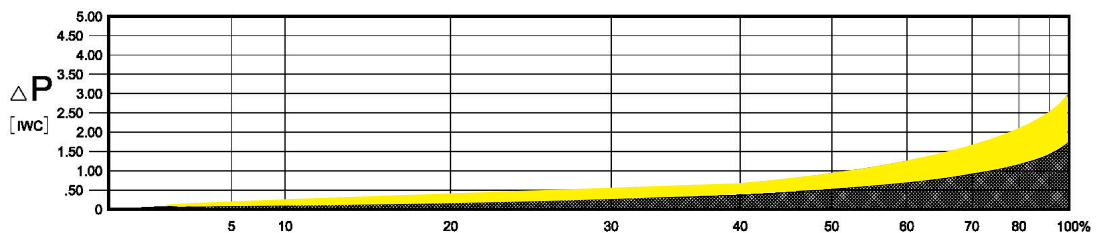
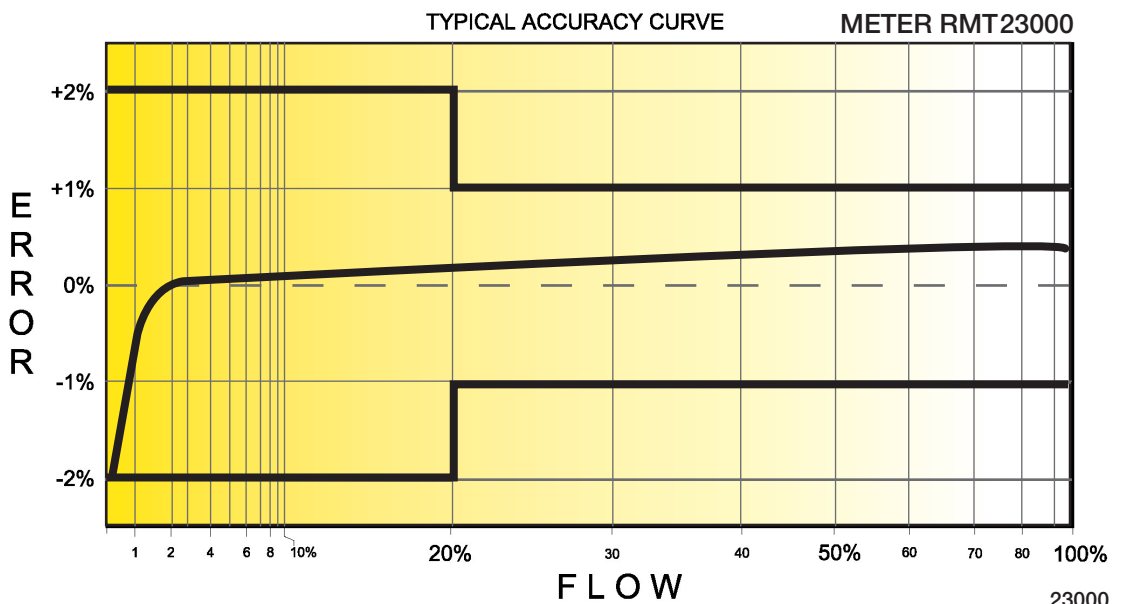
TECHNICAL SPECIFICATION

Connection (Flanged)	ANSI 125 FF	4"
MAOP	(psig)	175
Flow Capacity	(cfh)	23000
Rangeability* @ ±2% / ±1% Error		1:200 / 1:160
Average Start Rate	(cfh)	2.62
Average Stop Rate	(cfh)	1.60
Differential @ 100 % Flow [AIR/N.G.]	(I.W.C.)	2.85 / 1.71
Instrument Drive Rate	(cf/rev)	10 or 100
LF Pulser (Optional)	(cf/rev)	10 or 100

*Note: It should be noted, that moving parts in the meters with greater rangeability ratio are made to high class accuracy and tight tolerances. Improper installation, stresses on piping system due to temperature changes, settling and gas conditions can create a risk of meter rejection.

CORRECTED FLOW CAPACITY AND TYPICAL ACCURACY GUIDE

RMT23000 METER (SCFH)	
Gauge Pressure P.S.I.G. 0.25	RMT23000 Qmax = 23000ft ³ /hr
2	24046
5	30292
10	38099
15	45906
20	53714
25	61521
50	100557
75	139593
100	178629
125	217665
150	256701
175	295737



ROMET

Measuring energy globally

Canada 905-624-1591 USA 1-800-387-3201
www.rometlimited.com • romet@rometlimited.com

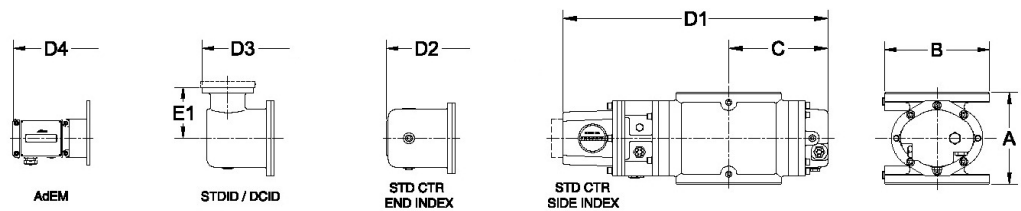
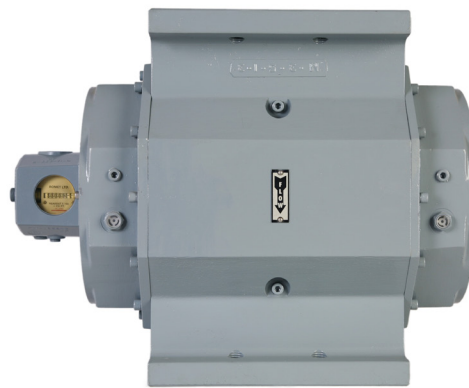
The values quoted are typical of normal production. They do not constitute a specification. Romet Limited reserves the right to change any information in this literature without notice. All of the information and data in this literature has

been carefully compiled and thoroughly checked. However, Romet Limited will not assume responsibility for any possible omissions or errors. Romet is a registered trademark.



ROMET

Rotary Gas Meters



METER SIZE	ANSI 125 FF FLANGE	A	B	C	D1	D2	D3	D4	E1	WEIGHT (lbs)
RM25000	6"	16.00"	11.25"	8.93"	20.95"	22.43"	23.21"	24.15"	4.00"	126

RM25000 - IMPERIAL

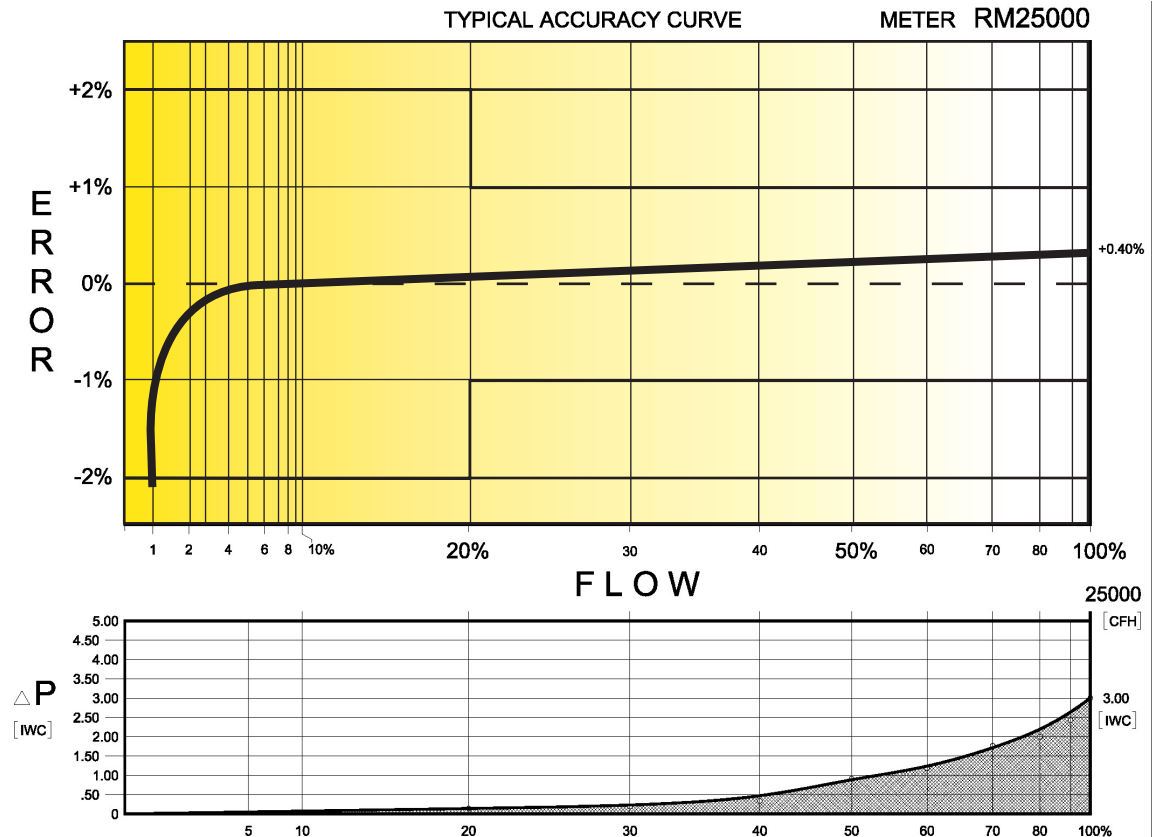
IMPERIAL RM25000 6" FLANGE CONNECTION

TECHNICAL SPECIFICATION

Connection (Flanged)	ANSI 125 FF	6"
MAOP	(psig)	175
Flow Capacity	(cfh)	25000
Rangeability @ ± 1% Error		90:1
Rangeability @ ± 2% Error		180:1
Start Rate	(cfh)	14.5
Stop Rate	(cfh)	8.0
Differential @ 100% Flow	(I.W.C.)	3.00
Instrument Drive Rate	(cf/rev)	100
LF Pulser (Optional on Std Ctr)	(cf/pulse)	100

CORRECTED FLOW CAPACITY AND TYPICAL ACCURACY GUIDE

RM25000 METER (SCFH)	
Gauge Pressure P.S.I.G. 0.25	RM25000 Qmax = 25000ft ³ /hr
2	26137
5	32926
10	41412
15	49898
20	58384
25	66870
50	109300
75	151731
100	194161
125	236592
150	279022
175	321453



ROMET

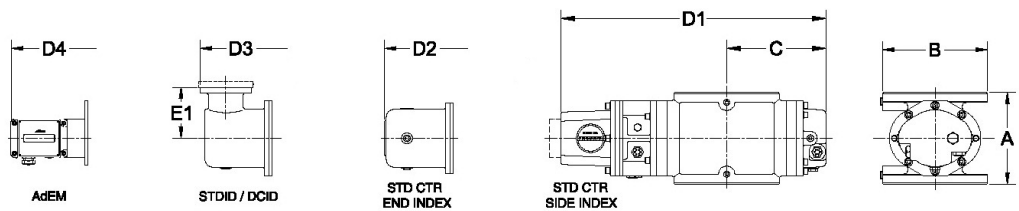
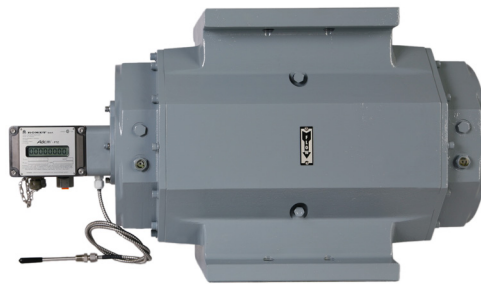
GAS METERS AND ELECTRONIC INSTRUMENTS
 Phone 905-624-1591 USA 1-800-387-3201
 www.rometlimited.com • email: romet@rometlimited.com

The values quoted are typical of normal production. They do not constitute a specification. Romet Limited reserves the right to change any information in this literature without notice. All of the information and data in this literature has been carefully compiled and thoroughly checked. However, Romet Limited will not assume responsibility for any possible omissions or errors.
 ROMET and ROMET & DESIGN are registered trademarks of Romet Limited. Romet Limited's gas metering technology is protected under U.S. Patent No. 4,910,519 and 6,453,721 and Canadian Patent No. 1,293,568.



ROMET

Rotary Gas Meters



METER SIZE	ANSI 125 FF FLANGE	A	B	C	D1	D2	D3	D4	E1	WEIGHT (lbs)
RM38000	6"	16.00"	11.25"	11.37"	25.83"	27.31"	28.09"	29.03"	4.00"	155

RM38000 - IMPERIAL

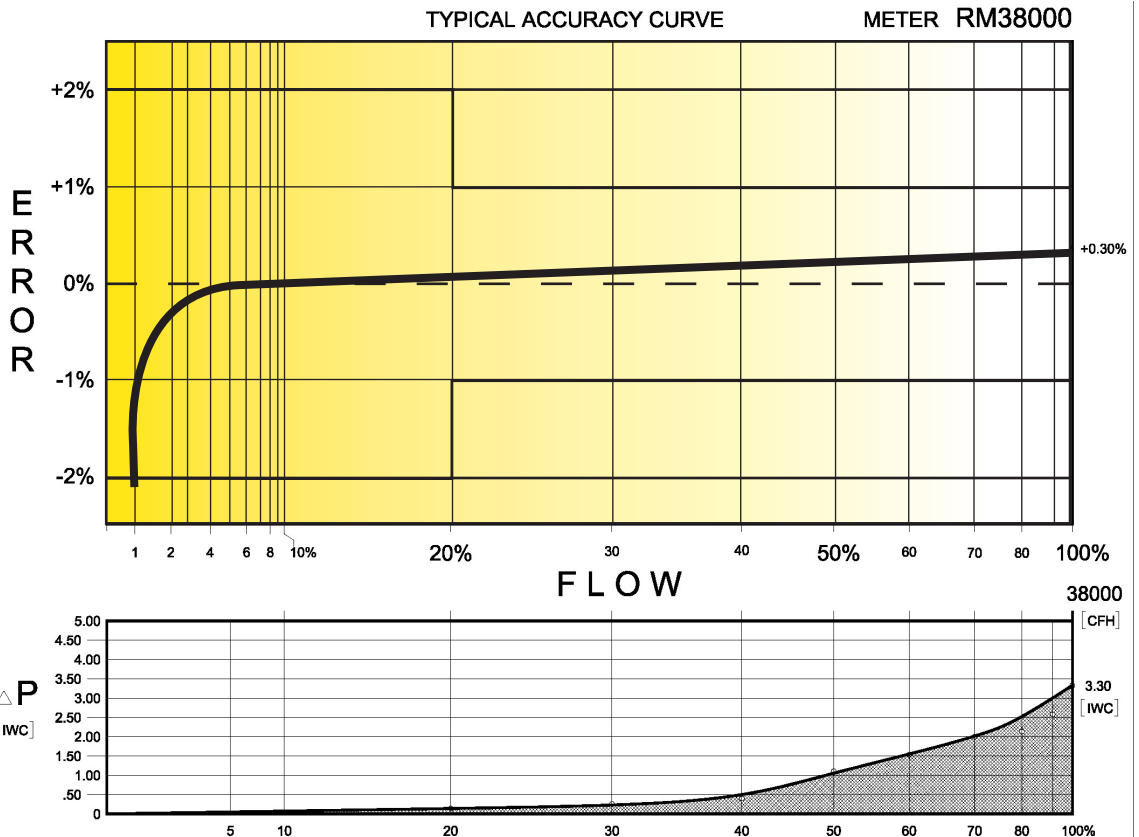
IMPERIAL RM38000 6" FLANGE CONNECTION

TECHNICAL SPECIFICATION

Connection (Flanged)	ANSI 125 FF	6"
MAOP	(psig)	175
Flow Capacity	(cfh)	38000
Rangeability @ ± 1% Error		120:1
Rangeability @ ± 2% Error		250:1
Start Rate	(cfh)	22.0
Stop Rate	(cfh)	14.0
Differential @ 100% Flow	(I.W.C.)	3.30
Instrument Drive Rate	(cf/rev)	100/1000
LF Pulser (Optional on Std Ctr)	(cf/pulse)	100/1000

CORRECTED FLOW CAPACITY AND TYPICAL ACCURACY GUIDE

RM38000 METER (SCFH)	
Gauge Pressure P.S.I.G. 0.25	RM38000 Qmax = 38000ft ³ /hr
2	39728
5	50047
10	62946
15	75845
20	88744
25	101643
50	166137
75	230631
100	295125
125	359620
150	424114
175	488608



ROMET

GAS METERS AND ELECTRONIC INSTRUMENTS
 Phone 905-624-1591 USA 1-800-387-3201
 www.rometlimited.com • email: romet@rometlimited.com

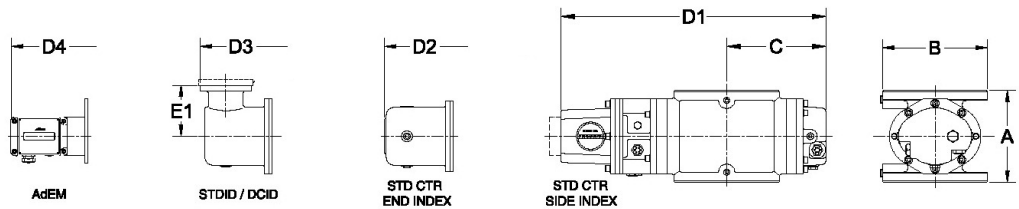
The values quoted are typical of normal production. They do not constitute a specification. Romet Limited reserves the right to change any information in this literature without notice. All of the information and data in this literature has been carefully compiled and thoroughly checked. However, Romet Limited will not assume responsibility for any possible omissions or errors.

ROMET and ROMET & DESIGN are registered trademarks of Romet Limited. Romet Limited's gas metering technology is protected under U.S. Patent No. 4,910,519 and 6,453,721 and Canadian Patent No. 1,293,568.



ROMET

Rotary Gas Meters



METER SIZE	ANSI 125 FF FLANGE	A	B	C	D1	D2	D3	D4	E1	WEIGHT (lbs)
RM38000	8"	16.00"	11.25"	11.37"	25.83"	27.31"	28.09"	29.03"	4.00"	155

RM38000 - IMPERIAL

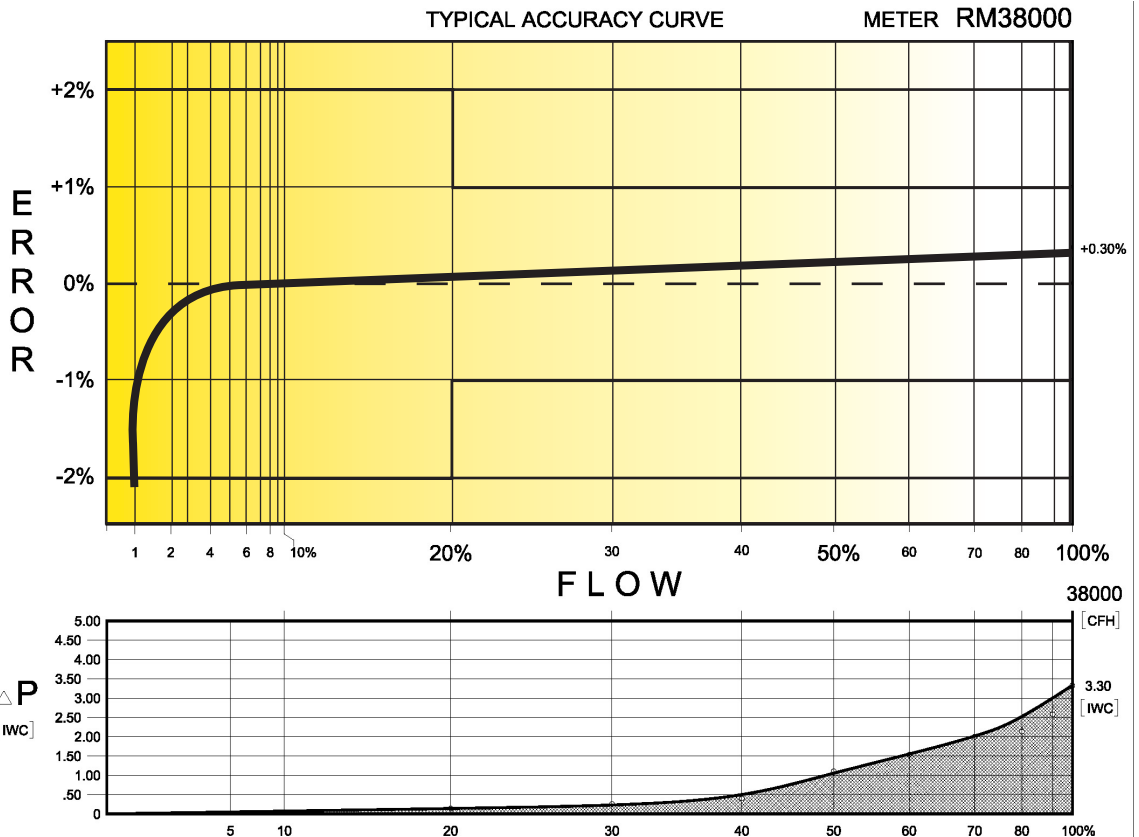
IMPERIAL RM38000 8" FLANGE CONNECTION

TECHNICAL SPECIFICATION

Connection (Flanged)	ANSI 125 FF	8"
MAOP	(psig)	175
Flow Capacity	(cfh)	38000
Rangeability @ ± 1% Error		120:1
Rangeability @ ± 2% Error		250:1
Start Rate	(cfh)	22.0
Stop Rate	(cfh)	14.0
Differential @ 100% Flow	(I.W.C.)	3.30
Instrument Drive Rate	(cf/rev)	100/1000
LF Pulser (Optional on Std Ctr)	(cf/pulse)	100/1000

CORRECTED FLOW CAPACITY AND TYPICAL ACCURACY GUIDE

RM38000 METER (SCFH)	
Gauge Pressure P.S.I.G. 0.25	RM38000 Qmax = 38000ft ³ /hr
2	39728
5	50047
10	62946
15	75845
20	88744
25	101643
50	166137
75	230631
100	295125
125	359620
150	424114
175	488608



ROMET

GAS METERS AND ELECTRONIC INSTRUMENTS
 Phone 905-624-1591 USA 1-800-387-3201
 www.rometlimited.com • email: romet@rometlimited.com

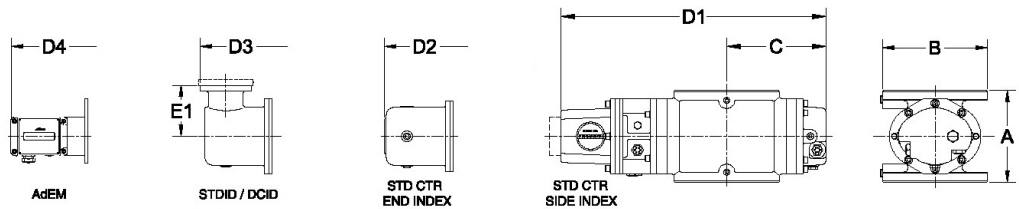
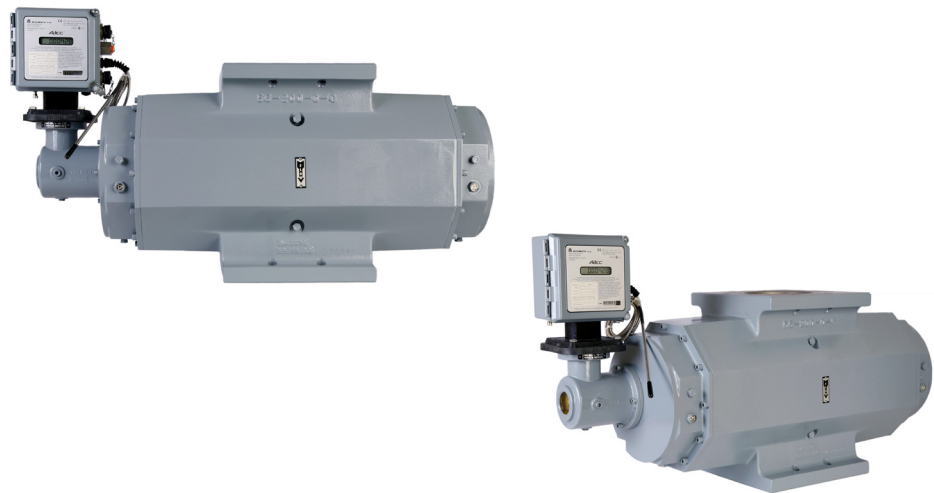
The values quoted are typical of normal production. They do not constitute a specification. Romet Limited reserves the right to change any information in this literature without notice. All of the information and data in this literature has been carefully compiled and thoroughly checked. However, Romet Limited will not assume responsibility for any possible omissions or errors.

ROMET and ROMET & DESIGN are registered trademarks of Romet Limited. Romet Limited's gas metering technology is protected under U.S. Patent No. 4,910,519 and 6,453,721 and Canadian Patent No. 1,293,568.



ROMET

Rotary Gas Meters



METER SIZE	ANSI 125 FF FLANGE	A	B	C	D1	D2	D3	D4	E1	WEIGHT (lbs)
RM56000	6"	16.00"	11.25"	14.87"	32.83"	34.31"	35.09"	36.03"	4.00"	189

RM56000 - IMPERIAL

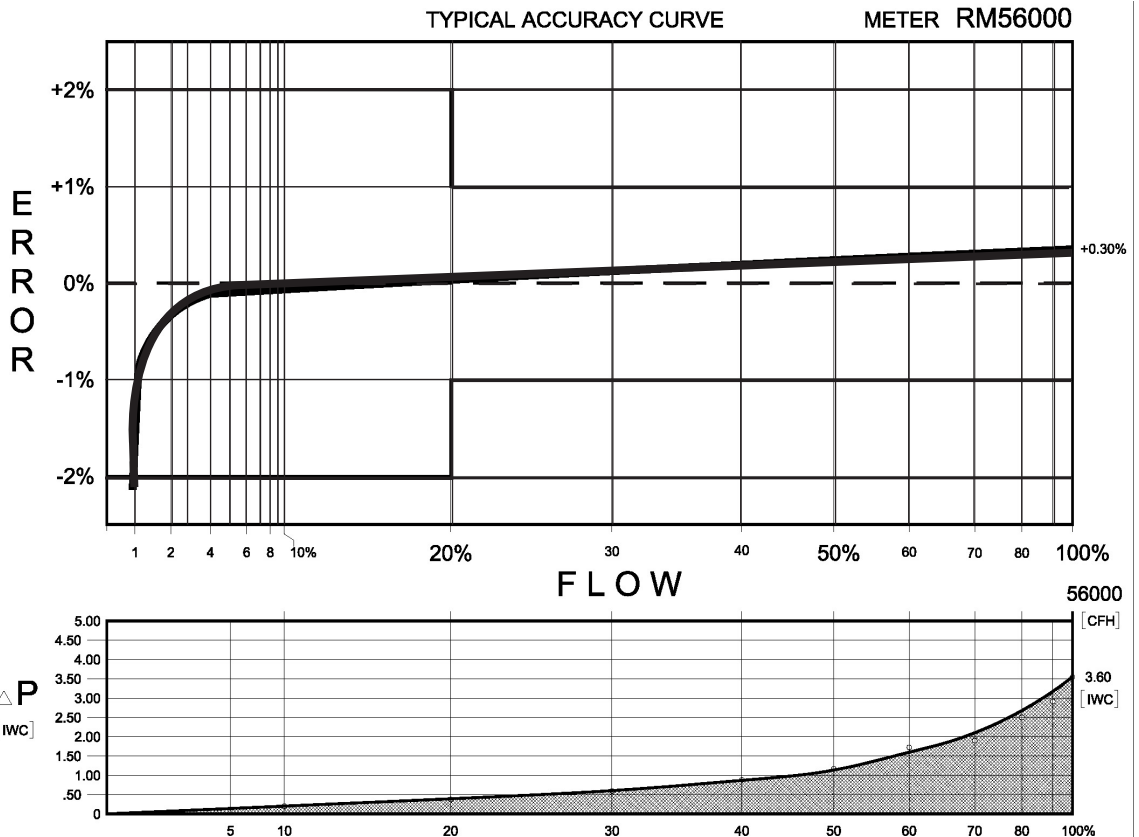
IMPERIAL RM56000 6" FLANGE CONNECTION

TECHNICAL SPECIFICATION

Connection (Flanged)	ANSI 125 FF	6"
MAOP	(psig)	175
Flow Capacity	(cfh)	56000
Rangeability @ $\pm 1\%$ Error		100:1
Rangeability @ $\pm 2\%$ Error		200:1
Start Rate	(cfh)	26.0
Stop Rate	(cfh)	16.0
Differential @ 100% Flow	(I.W.C.)	3.60
Instrument Drive Rate	(cf/rev)	100/1000
LF Pulser (Optional on Std Ctr)	(cf/pulse)	100/1000

CORRECTED FLOW CAPACITY AND TYPICAL ACCURACY GUIDE

RM56000 METER (SCFH)	
Gauge Pressure P.S.I.G. 0.25	RM56000 Qmax = 56000ft ³ /hr
2	58547
5	73754
10	92763
15	111772
20	130781
25	149790
50	244834
75	339878
100	434922
125	529966
150	625010
175	720054



ROMET

GAS METERS AND ELECTRONIC INSTRUMENTS

Phone 905-624-1591 USA 1-800-387-3201

www.rometlimited.com • email: romet@rometlimited.com

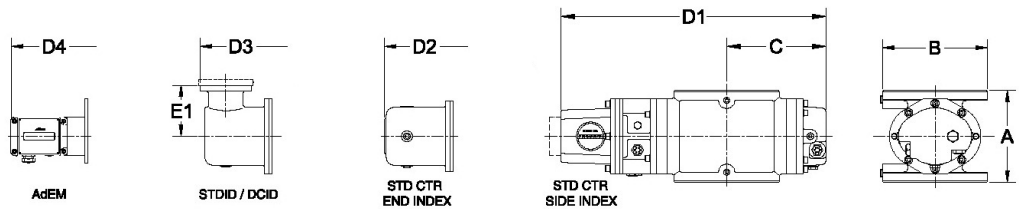
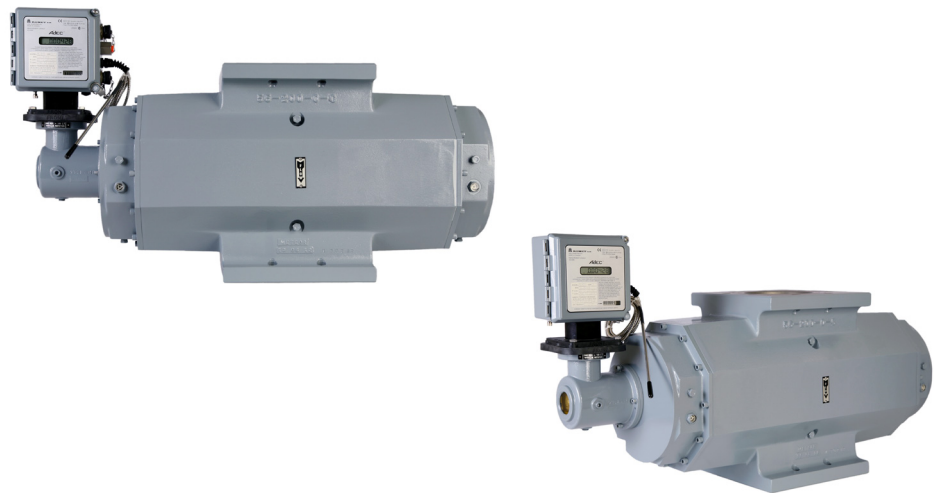
The values quoted are typical of normal production. They do not constitute a specification. Romet Limited reserves the right to change any information in this literature without notice. All of the information and data in this literature has been carefully compiled and thoroughly checked. However, Romet Limited will not assume responsibility for any possible omissions or errors.

ROMET and ROMET & DESIGN are registered trademarks of Romet Limited. Romet Limited's gas metering technology is protected under U.S. Patent No. 4,910,519 and 6,453,721 and Canadian Patent No. 1,293,568.



ROMET

Rotary Gas Meters



METER SIZE	ANSI 125 FF FLANGE	A	B	C	D1	D2	D3	D4	E1	WEIGHT (lbs)
RM56000	8"	16.00"	11.25"	14.87"	32.83"	34.31"	35.09"	36.03"	4.00"	189

RM56000 - IMPERIAL

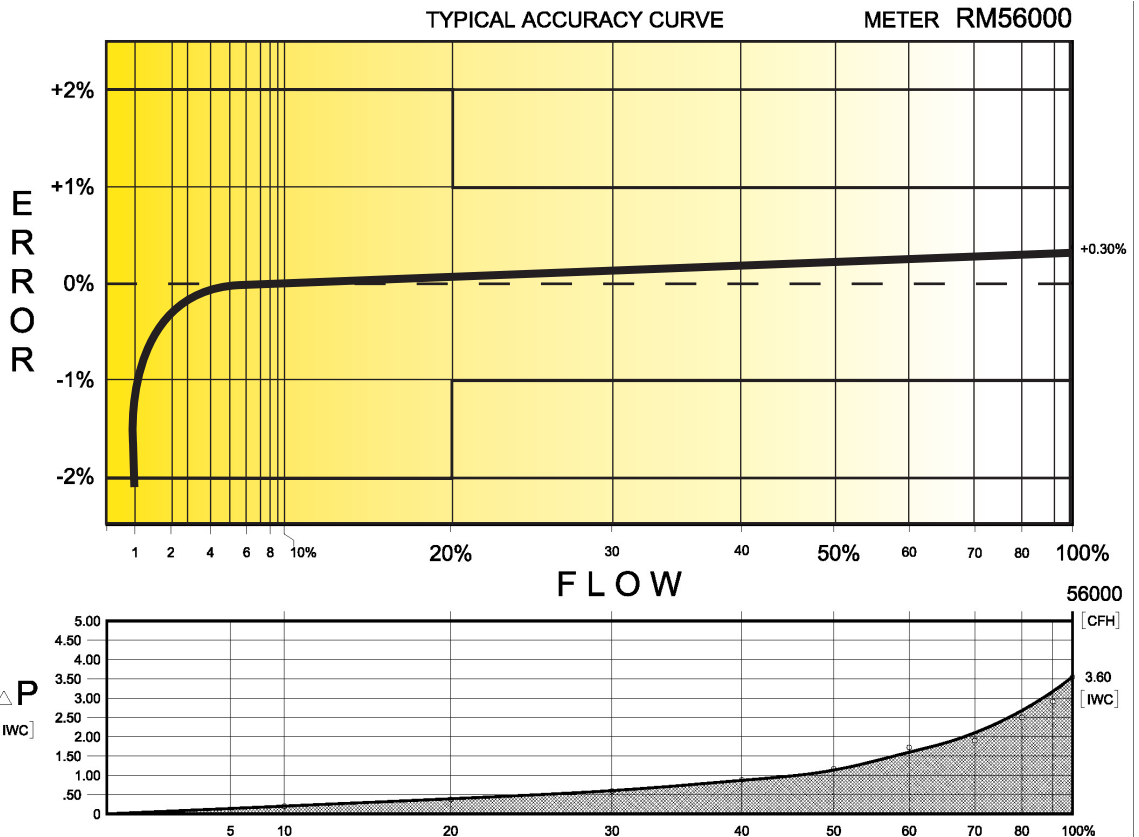
IMPERIAL RM56000 8" FLANGE CONNECTION

TECHNICAL SPECIFICATION

Connection (Flanged)	ANSI 125 FF	8"
MAOP	(psig)	175
Flow Capacity	(cfh)	56000
Rangeability @ ± 1% Error		100:1
Rangeability @ ± 2% Error		200:1
Start Rate	(cfh)	26.0
Stop Rate	(cfh)	16.0
Differential @ 100% Flow	(I.W.C.)	3.60
Instrument Drive Rate	(cf/rev)	100/1000
LF Pulser (Optional on Std Ctr)	(cf/pulse)	100/1000

CORRECTED FLOW CAPACITY AND TYPICAL ACCURACY GUIDE

RM56000 METER (SCFH)	
Gauge Pressure P.S.I.G. 0.25	RM56000 Qmax = 56000ft ³ /hr
2	58547
5	73754
10	92763
15	111772
20	130781
25	149790
50	244834
75	339878
100	434922
125	529966
150	625010
175	720054



ROMET

GAS METERS AND ELECTRONIC INSTRUMENTS
 Phone 905-624-1591 USA 1-800-387-3201
 www.rometlimited.com • email: romet@rometlimited.com

The values quoted are typical of normal production. They do not constitute a specification. Romet Limited reserves the right to change any information in this literature without notice. All of the information and data in this literature has been carefully compiled and thoroughly checked. However, Romet Limited will not assume responsibility for any possible omissions or errors.
 ROMET and ROMET & DESIGN are registered trademarks of Romet Limited. Romet Limited's gas metering technology is protected under U.S. Patent No. 4,910,519 and 6,453,721 and Canadian Patent No. 1,293,568.

Romet AdEM®-PTZ Module

Electronic Reliability You Can Count On

Romet Limited is pleased to offer our next generation of direct mount electronic instrumentation with the ability to account for temperature, pressure and supercompressibility. Available for both Romet and Dresser rotary gas meters, the AdEM®-PTZ has a compact, rugged, service-free, tamperproof and weather resistant design with a high level of accuracy and customization. With a nominal battery life of 15 years, the AdEM-PTZ makes an ideal upgrade to any system requiring instrumentation.



Romet RMT Meter with AdEM-PTZ and patented independent mechanical backup index

Romet has developed a single adapter plate that will allow our AdEM-PTZ to be installed on all sizes of the Romet RM 600-56M rotary meters and RMT 600-23M rotary meters. We also have a single adapter plate for Dresser B3 meters ranging from 8C to 56M and LMMA meters ranging from 1.5M-16M.



ROMET

Measuring energy globally



Custom AMI-AMR Installation Options

Romet offers a full line of mounting brackets for the installation of an AMI-AMR device of your choice. Our custom solutions can be easily field installed or mounted and programmed at our factory to reduce installation costs and improve reliability.

Specifications

- 15 year Nominal Battery life
- Battery life indicated in months or percentages
- End of Battery Life Warning
- Long Lasting Lithium Battery
- Non-volatile EEPROM Memory with full Audit Trail
- 256 days of hourly readings
- 1024 daily logs
- 102 alarm logs stamped with time and date
- 166 event logs
- Live or fixed temperature and pressure compensation
- Fixed pressure factor customizable
- Total Accuracy of +/-0.3% for reference conditions
- Expands meter rangeability to 200:1
- Standard Ambient Temperature: -40F to +158F (-40C to +70C)
- Four output pulses available:
 - Two isolated volume pulse output channels (corrected and uncorrected)
 - One isolated pulse output for alarm or volume (corrected or uncorrected)
 - Additional isolated corrected pulse output channel for AMR/AMI devices
- Serial communication port- RS232 or RS485
- Hayes compatible modem communication
- Modbus protocol available
- Optional portable keyboard
- Highly sensitive RTD temperature sensor
- Fixed/Configurable Parameters with Multiple levels of security
- Compatible with Itron, Sensus, Aclara, Cellnet and other AMI/AMR Devices
- Convenient one touch push button proving mode
- Quick and efficient proving with a Model 5 prover
- Rugged single scroll button with up to 15 display parameters
- Large, easy to read LCD 8 digits, 14 segment semi alpha-numeric
- UV resistant engineered polycarbonate enclosure
- Electronics sealed in silicon potting material for improved reliability and product life
- Weather resistant
- Adapter plates for Dresser LMMA & B3 meters
- Nominal 20 year Calibration
 - 1 point temperature calibration
 - 3 point pressure calibration

AdEM-PTZ Approvals/Certifications

- Intrinsically Safe Class I Division 1 & 2 Group D
- IECEx Certification of Conformity - 60079 Intrinsic Safety
- CSA Approval 2277666
- Measurement Canada Approval AG-0606 Pending
- ATEX Approval FTZU 08 ATEX Q 004 & FTZU 05 ATEX 0274X
- MID Approval SK 14-QD-SMU017 & SK 13-MI002-SMU005 Pending
- New York State Approval Pending
- Third Party Qualification Testing – Gas Technology Institute
- CE Declaration of Conformity Pending

Contact us today for more details!



ROMET

Measuring energy globally

USA: 1-800-387-3201
Canada: 905-624-1591

romet@rometlimited.com
www.rometlimited.com

Romet AdEM®-T Module

Electronic Reliability You Can Count On

Romet Limited is pleased to offer our next generation of direct mount temperature compensating electronic modules for both Romet and Dresser rotary gas meters. The AdEM®-T has a compact, rugged, service-free, tamperproof and weather resistant design with a high level of accuracy and customization. With a nominal battery life of 20 years, the AdEM-T makes an ideal replacement for mechanical TC indexes.



Romet RMT Meter with AdEM-T and patented independent backup index

Romet has developed a single adapter plate that will allow our AdEM-T to be installed on Romet RM 600-56M rotary meters and RMT 600-23M rotary meters. We also have a single adapter plate for Dresser B3 meters ranging from 8C to 56M and LMMA meters ranging from 1.5M-16M.



ROMET

Measuring energy globally



Custom AMI-AMR Installation Options

Romet offers a full line of mounting brackets for the installation of an AMI-AMR device of your choice. Our custom solutions can be easily field installed or mounted and programmed at our factory to reduce installation costs and improve reliability.

Specifications

- 20 year Nominal Battery life
- Battery life indicated in months or percentages
- End of Battery Life Warning
- Long Lasting Lithium Battery
- Non-volatile EEPROM Memory with full Audit Trail
- 100 days of hourly readings
- 672 daily logs
- 102 alarm logs stamped with time and date
- 200 event logs
- Live Temperature compensation
- Fixed or customizable pressure factor
- Total Accuracy of +/-0.3%
- Expands meter rangeability to 200:1
- Standard Ambient Temperature: -40 to 158F
- Four output pulses available:
 - Two isolated volume pulse output channels (corrected and uncorrected)
 - One isolated pulse output for alarm or volume (corrected or uncorrected)
 - Additional isolated corrected pulse output channel for AMR/AMI devices
- Serial communication port- RS232 or RS485
- Hayes compatible modem communication
- Optional portable keyboard
- Highly sensitive temperature sensor
- Fixed/Configurable Parameters with Multiple levels of security
- Compatible with Itron, Sensus, Aclara, Cellnet and other AMI/AMR Devices
- Convenient one touch push button proving mode
- Quick and efficient proving with a Model 5 prover
- Rugged single scroll button with up to 15 display parameters
- Large, easy to read LCD 8 digits, 14 segment semi alpha-numeric
- UV resistant engineered polycarbonate enclosure
- Electronics sealed in silicon potting material for improved reliability and product life
- Water resistant
- Adapter plates for Dresser LMMA & B3 meters
- Nominal 20 year Calibration
 - 3 points temperature calibration

AdEM Approvals/Certifications

- Intrinsically Safe Class I Division 1 & 2 Group D
- IECEx Certification of Conformity - 60079 Intrinsic Safety
- Measurement Canada Approval AG-0593
- CSA Approval 2277666
- ATEX Approval FTZU 08 ATEX Q 004 & FTZU 05 ATEX 0274X
- MID Approval SK 14-QD-SMU017 & SK 13-MI002-SMU005
- New York State Approval Pending
- Third Party Qualification Testing – Gas Technology Institute
- CE Declaration of Conformity

Contact us today for more details!



ROMET

Measuring energy globally

USA: 1-800-387-3201
Canada: 905-624-1591

romet@rometlimited.com
www.rometlimited.com